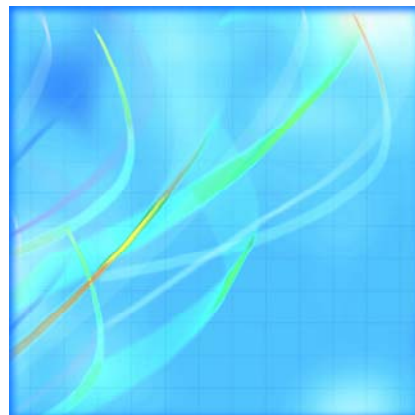


Catalogue no. 23-012-X

Cattle Statistics

2010



Statistics
Canada

Statistique
Canada

Canada

How to obtain more information

For information about this product or the wide range of services and data available from Statistics Canada, visit our website at www.statcan.gc.ca, e-mail us at infostats@statcan.gc.ca, or telephone us, Monday to Friday from 8:30 a.m. to 4:30 p.m., at the following numbers:

Statistics Canada's National Contact Centre

Toll-free telephone (Canada and the United States):

Inquiries line	1-800-263-1136
National telecommunications device for the hearing impaired	1-800-363-7629
Fax line	1-877-287-4369

Local or international calls:

Inquiries line	1-613-951-8116
Fax line	1-613-951-0581

Depository Services Program

Inquiries line	1-800-635-7943
Fax line	1-800-565-7757

To access this product

This product, Catalogue no. 23-012-X, is available free in electronic format. To obtain a single issue, visit our website at www.statcan.gc.ca and select "Publications."

Standards of service to the public

Statistics Canada is committed to serving its clients in a prompt, reliable and courteous manner. To this end, Statistics Canada has developed *standards of service* that its employees observe. To obtain a copy of these service standards, please contact Statistics Canada toll-free at 1-800-263-1136. The service standards are also published on www.statcan.gc.ca under "About us" > "Providing services to Canadians."

Cattle Statistics

2010

Published by authority of the Minister responsible for Statistics Canada

© Minister of Industry, 2010

All rights reserved. The content of this electronic publication may be reproduced, in whole or in part, and by any means, without further permission from Statistics Canada, subject to the following conditions: that it be done solely for the purposes of private study, research, criticism, review or newspaper summary, and/or for non-commercial purposes; and that Statistics Canada be fully acknowledged as follows: Source (or "Adapted from", if appropriate): Statistics Canada, year of publication, name of product, catalogue number, volume and issue numbers, reference period and page(s). Otherwise, no part of this publication may be reproduced, stored in a retrieval system or transmitted in any form, by any means—electronic, mechanical or photocopy—or for any purposes without prior written permission of Licensing Services, Client Services Division, Statistics Canada, Ottawa, Ontario, Canada K1A 0T6.

February 2010

Catalogue no. 23-012-X, vol. 9, no. 1

ISSN 1705-1320

Frequency: Semi-Annual

Ottawa

Cette publication est également disponible en français.

Note of appreciation

Canada owes the success of its statistical system to a long-standing partnership between Statistics Canada, the citizens of Canada, its businesses, governments and other institutions. Accurate and timely statistical information could not be produced without their continued cooperation and goodwill.

User information

Symbols

The following standard symbols are used in Statistics Canada publications:

- . not available for any reference period
- .. not available for a specific reference period
- ... not applicable
- 0 true zero or a value rounded to zero
- 0^s value rounded to 0 (zero) where there is a meaningful distinction between true zero and the value that was rounded
- p preliminary
- r revised
- x suppressed to meet the confidentiality requirements of the *Statistics Act*
- E use with caution
- F too unreliable to be published

This publication was prepared under the direction of:

- **Gabriella Martello, Chief**, Livestock and Food Section
- **Robert Plourde, Unit Head**, Livestock and Food Section
- **Donald Cutts, Statistical Officer**, Livestock and Food Section

Table of contents

Highlights	6
Analysis	7
Related products	10
Statistical tables	
1 Cattle on farms	13
1-1 Canada	13
1-2 Newfoundland and Labrador	14
1-3 Prince Edward Island	14
1-4 Nova Scotia	15
1-5 New Brunswick	15
1-6 Atlantic	16
1-7 Quebec	16
1-8 Ontario	17
1-9 East	17
1-10 Manitoba	18
1-11 Saskatchewan	18
1-12 Alberta	19
1-13 British Columbia	19
1-14 West	20
2 Cows born prior to 1999	21
2-1 Total Cows	21
2-2 Dairy Cows	22
2-3 Beef Cows	23
3 Feeder cattle by weight category, at January 1, 2010	24
4 Cattle, supply and demand	26
5 Cattle production - Canada	35
6 Calves production - Canada	36
7 Cattle by farm type	37
7-1 Canada	37
7-2 Atlantic provinces	39

Table of contents – continued

7-3	Quebec	41
7-4	Ontario	43
7-5	Eastern provinces	45
7-6	Manitoba	47
7-7	Saskatchewan	49
7-8	Alberta	51
7-9	British Columbia	53
7-10	Western provinces	55
8	Feeder cattle by weight category, by farm type at January 1, 2010	57
8-1	Canada	57
8-2	East	58
8-3	Atlantic	59
8-4	Quebec	60
8-5	Ontario	61
8-6	Manitoba	62
8-7	Saskatchewan	63
8-8	Alberta	64
8-9	British Columbia	65
8-10	West	66
9	Prices	67
9-1	Toronto A1 to A2 steers	67
9-2	Alberta steers	68
10	Cattle and calves: Number by class and calf crop	68
10-1	Canada and United States, January 1	68
10-2	United States, January 1	69
10-3	Canada, January 1	69
11	Supply and disposition of red meat, Canada	70
11-1	Beef	70
11-2	Veal	70
11-3	Beef and veal total	71
11-4	Pork	71
11-5	Mutton and lamb	72
11-6	Offal	72
11-7	Total red meat	73

Table of contents – continued**Data quality, concepts and methodology**

Concepts and methods 74

Charts

1. Cattle and Calves inventory at January 1, Canada, 1990 - 2010 8
2. Cattle and calves slaughter and exports, Canada, 1990 - 2009 9

Highlights

- Canadian cattle producers reported 13.0 million head at January 1, down 1.3% from January 2009.
- The Canadian dairy herd fell 0.2% during 2009, while the total beef herd fell 1.4%.
- Cattle and calves slaughter levels in Canada last year were down 3.7% from the previous year.
- Canadian exports of live cattle and calves in 2009 fell 31.6% from 2008.

Analysis

As of January 1, 2010, farm inventories of cattle reached their lowest level in 15 years, while inventories of hogs were at a 12-year low.

Canadian cattle producers reported 13.0 million head at January 1, 2010, down 1.3% from January 2009. Hog producers had an estimated 11.6 million hogs on their farms, down 4.5%.

The number of sheep on Canadian farms also declined between January 1, 2009 and January 1, 2010. The total sheep inventory fell 0.2% to 806,600 head. The slaughter of sheep in Canada remained unchanged from levels a year ago.

Text table 1
Cattle inventories at January 1

	Cattle			2009 to 2010
	2008	2009	2010	
	thousands of head			percentage change
Canada	13,895.0	13,180.0	13,015.0	-1.3
Atlantic	271.0	270.4	257.1	-4.9
Quebec	1,345.0	1,340.0	1,310.0	-2.2
Ontario	1,883.5	1,704.6	1,742.9	2.2
Manitoba	1,355.0	1,280.0	1,230.0	-3.9
Saskatchewan	2,870.0	2,650.0	2,800.0	5.7
Alberta	5,560.0	5,380.0	5,150.0	-4.3
British Columbia	610.0	555.0	525.0	-5.4

Cattle and calves inventory decreasing to a 15-year low

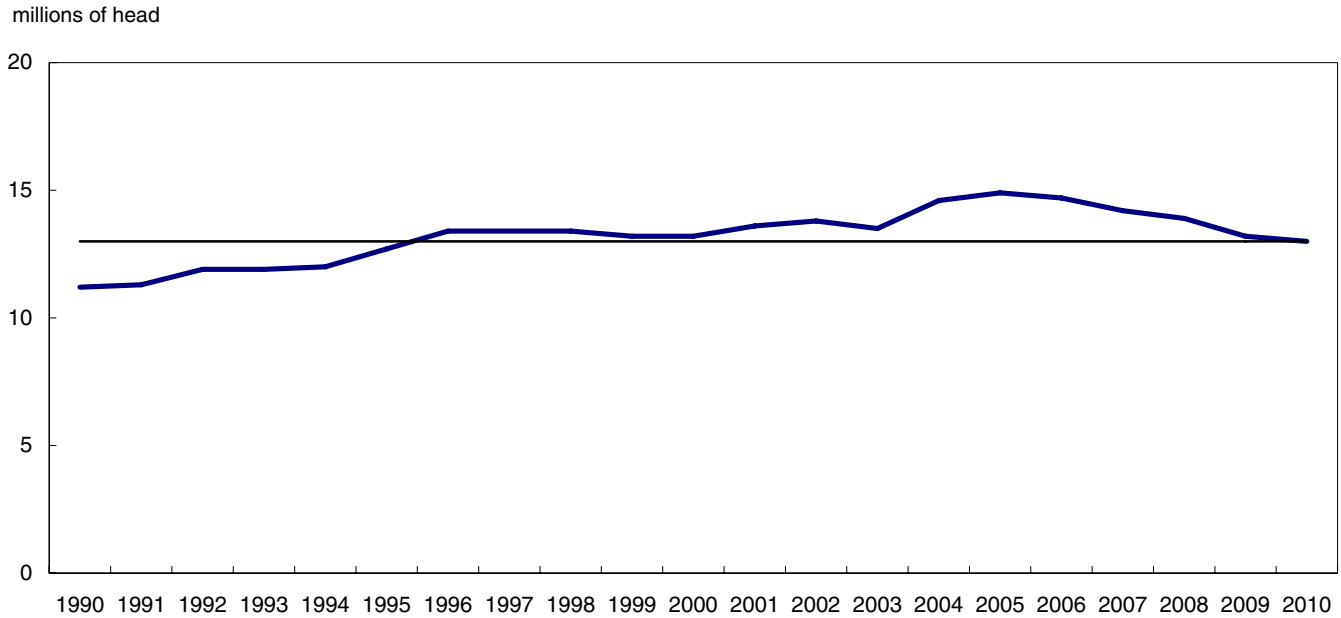
Canadian cattle producers reported 13.0 million head at January 1, down 1.3% from January 2009. Farm inventories of cattle reached their lowest level in 15 years, reflecting factors such as market uncertainty and rising input costs over the past several years.

The nineties were a period of expansion in the Canadian cattle industry. Investments in slaughter plant capacity and feedlot consolidation occurred in response to domestic and export market demand.

Droughts in 2001 and 2002 affected water and forage supply and damaged pastures. The discovery of a case of Bovine Spongiform Encephalopathy (BSE) in May 2003 almost brought the cattle sector to a halt, and the subsequent reports of eight more BSE cases in the following four years prompted a loss in the industry and a slow recovery of exports markets, increased processing and testing costs, and depressed market prices for breeders, feeders, fed cattle and cull animals.

Since 2007, increased demand for ethanol has caused a surge in feed grain prices, impacting feed costs for livestock producers. The appreciation of the Canadian dollar as well as the introduction of the Country of Origin Labelling (COOL) regulations reduced the competitiveness of the Canadian export market. The combination of these events over the last decade has affected profit margins in the cattle industry.

Chart 1
Cattle and Calves inventory at January 1, Canada, 1990 - 2010



Dairy herd stabilizing, beef herd not rebuilding

A total of 99,265 farms reported beef or dairy cattle on their operations as of January 1, 2010. This is the first time since data has been collected that the number of cattle farms has fallen below 100,000. The Canadian dairy herd fell 0.2% during 2009, while the total beef herd fell 1.4%.

Cattle up in Saskatchewan and Ontario, down in other provinces

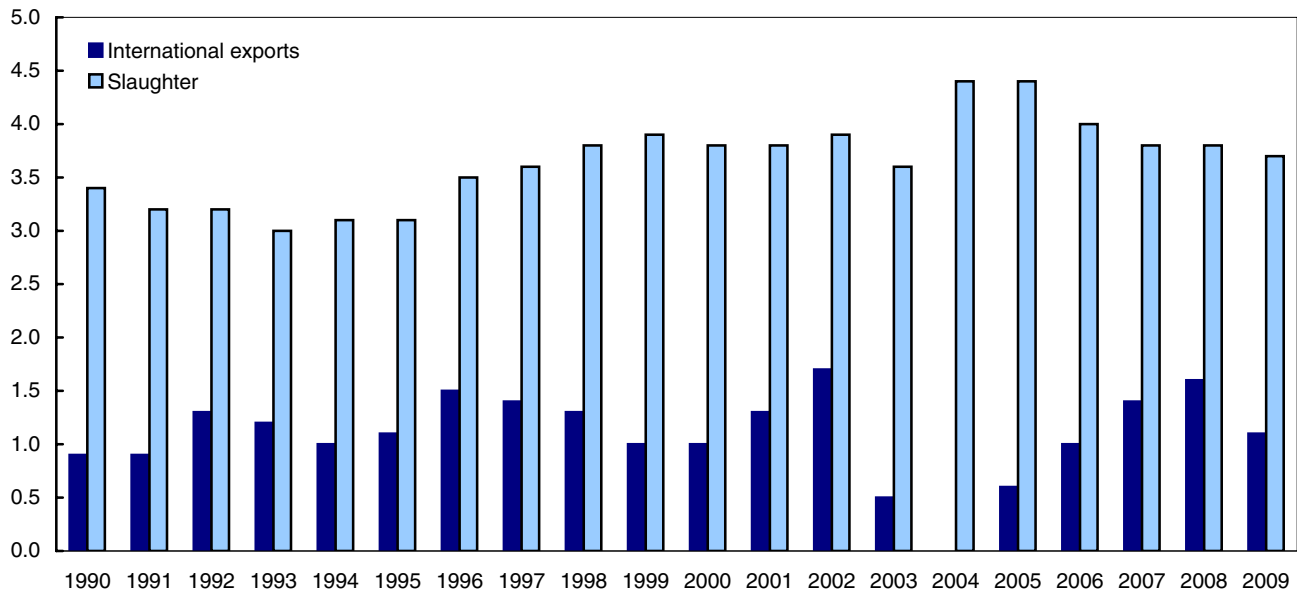
Cattle and calf inventories are up 5.7% in Saskatchewan and up 2.2% in Ontario. Cattle numbers fell in 2009 in other provinces: British Columbia (-5.4%), Alberta (-4.3%), Manitoba (-3.9%), Quebec (-2.2%) and Atlantic provinces (-4.9%).

Slaughter and exports down in 2009

Cattle and calves slaughter levels in Canada last year were down 3.7% from the previous year. At the same time, Canadian exports of live cattle and calves fell 31.6%. It was the first full year that COOL regulations had been implemented.

Chart 2
Cattle and calves slaughter and exports, Canada, 1990 - 2009

millions of head



Related products

Selected publications from Statistics Canada

21-020-X	Food Statistics
21-206-X	Statistics on Income of Farm Operators
21-207-X	Statistics on Income of Farm Families
21-208-X	Statistics on Revenues and Expenses of Farms
23-014-X	Dairy Statistics
23-015-X	Poultry and Egg Statistics
23-501-X	Livestock Feed Requirements Study

Selected CANSIM tables from Statistics Canada

003-0004	Livestock surveys, pigs, at end of quarter, quarterly
003-0016	Shorn wool statistics, annual
003-0026	Cattle and calves, farm and meat production, annual
003-0028	Hogs, sheep and lambs statistics, annual
003-0030	Number of calves born, semi-annual
003-0031	Number of sheep and lambs on farms, annual
003-0032	Number of cattle, by class and farm type, annual
003-0035	Per capita disappearance of meats and output of meats and offal, annual
003-0036	Animals slaughtered, supply and disappearance in Canada, annual
003-0037	Meat production, supply and disappearance in Canada, annual

003-0083	Cattle statistics, supply and demand of cattle, annual
003-0084	Cattle prices, steers, monthly
003-0085	Cattle and calves, number by class and calf crop, United States, annual
003-0086	Cattle, weighted average prices, steers, annual

Selected surveys from Statistics Canada

3460	Livestock Survey
------	------------------

Selected summary tables from Statistics Canada

- *Cattle inventories, by province*
- *Pig inventories, by province (quarterly)*
- *Sheep inventories, by province*

Statistical tables

Table 1-1
Cattle on farms — Canada

	Bulls, 1 year and over	Beef cows	Dairy cows	Heifers			Steers, 1 year and over	Calves, under 1 year	Total
				Heifers, dairy replacement	Heifers, beef replacement	Heifers, slaughter			
thousands of head									
At January 1									
2004	269.5	5,019.4	1,054.9	504.3	687.7	870.5	1,203.3	4,945.4	14,555.0
2005	272.6	5,283.6	1,041.4	517.8	637.8	945.0	1,159.5	5,067.3	14,925.0
2006	264.0	5,247.2	1,019.1	495.1	628.3	986.8	1,146.8	4,867.7	14,655.0
2007	244.6	5,020.1	994.8	480.1	587.1	963.5	1,145.2	4,719.6	14,155.0
2008	246.8	4,981.9	984.3	471.1	595.0	982.9	1,101.6	4,531.4	13,895.0
2009	243.9	4,649.5	978.5	455.6	537.0	824.5	1,057.6	4,433.4	13,180.0
2010	230.1	4,471.0	981.0	458.7	516.4	899.8	1,140.7	4,317.3	13,015.0
At July 1									
2004	284.7	5,334.7	1,053.1	522.8	805.4	1,252.6	1,705.2	5,651.5	16,610.0
2005	291.1	5,436.2	1,025.1	507.4	840.9	1,305.8	1,657.9	5,815.6	16,880.0
2006	267.6	5,164.6	1,000.4	506.5	690.8	1,247.4	1,655.3	5,467.4	16,000.0
2007	263.4	5,104.6	978.2	487.7	668.1	1,289.4	1,790.2	5,243.4	15,825.0
2008	261.2	4,862.4	981.8	476.5	654.6	1,175.5	1,576.4	5,206.6	15,195.0
2009	248.3	4,588.2	982.8	459.2	638.4	1,221.7	1,664.5	4,931.9	14,735.0
2010
	Bulls, 1 year and over	Beef cows	Dairy cows	Heifers			Steers, 1 year and over	Calves, under 1 year	Total
				Heifers, dairy replacement	Heifers, beef replacement	Heifers, slaughter			
percentage change from previous year									
At January 1									
2004	12.6	5.6	-1.0	-1.6	6.1	8.1	2.5	15.8	8.1
2005	1.2	5.3	-1.3	2.7	-7.3	8.6	-3.6	2.5	2.5
2006	-3.2	-0.7	-2.1	-4.4	-1.5	4.4	-1.1	-3.9	-1.8
2007	-7.3	-4.3	-2.4	-3.0	-6.6	-2.4	-0.1	-3.0	-3.4
2008	0.9	-0.8	-1.1	-1.9	1.3	2.0	-3.8	-4.0	-1.8
2009	-1.2	-6.7	-0.6	-3.3	-9.7	-16.1	-4.0	-2.2	-5.1
2010	-5.7	-3.8	0.3	0.7	-3.8	9.1	7.9	-2.6	-1.3
At July 1									
2004	4.1	8.3	-0.2	3.6	-6.8	11.4	6.7	6.1	6.0
2005	2.2	1.9	-2.7	-2.9	4.4	4.2	-2.8	2.9	1.6
2006	-8.1	-5.0	-2.4	-0.2	-17.8	-4.5	-0.2	-6.0	-5.2
2007	-1.6	-1.2	-2.2	-3.7	-3.3	3.4	8.1	-4.1	-1.1
2008	-0.8	-4.7	0.4	-2.3	-2.0	-8.8	-11.9	-0.7	-4.0
2009	-4.9	-5.6	0.1	-3.6	-2.5	3.9	5.6	-5.3	-3.0
2010

**Table 1-2
Cattle on farms — Newfoundland and Labrador**

	Bulls, 1 year and over	Beef cows	Dairy cows	Heifers			Steers, 1 year and over	Calves, under 1 year	Total
				Heifers, dairy replacement	Heifers, beef replacement	Heifers, slaughter			
thousands of head									
At January 1									
2004	0.1	0.7	5.2	1.9	0.2	0.1	0.2	2.0	10.4
2005	0.1	0.7	5.9	2.0	0.1	0.1	0.1	2.0	11.0
2006	0.1	0.8	6.2	2.0	0.1	0.1	0.1	2.3	11.7
2007	0.1	0.8	6.4	1.9	0.1	0.2	0.1	2.4	12.0
2008	0.1	0.7	6.7	2.1	0.1	0.1	0.1	2.6	12.5
2009	0.1	0.7	6.6	2.2	0.1	0.1	0.1	2.5	12.4
2010	0.1	0.5	6.2	2.4	0.1	0.0	0.0	2.6	11.9
At July 1									
2004	0.1	0.7	5.6	2.0	0.1	0.1	0.1	2.0	10.7
2005	0.1	0.7	6.1	1.9	0.1	0.2	0.1	2.2	11.4
2006	0.1	0.8	6.3	2.0	0.1	0.2	0.1	2.3	11.9
2007	0.1	0.6	6.8	2.3	0.1	0.1	0.1	2.4	12.5
2008	0.1	0.6	6.5	2.2	0.1	0.1	0.1	2.6	12.3
2009	0.1	0.5	6.2	2.1	0.1	0.1	0.1	2.6	11.8
2010

**Table 1-3
Cattle on farms — Prince Edward Island**

	Bulls, 1 year and over	Beef cows	Dairy cows	Heifers			Steers, 1 year and over	Calves, under 1 year	Total
				Heifers, dairy replacement	Heifers, beef replacement	Heifers, slaughter			
thousands of head									
At January 1									
2004	0.8	13.2	14.0	7.2	3.0	9.6	16.0	20.2	84.0
2005	0.8	14.6	13.5	7.4	2.8	8.9	15.5	20.0	83.5
2006	0.8	15.9	13.2	7.4	2.0	10.3	15.5	20.4	85.5
2007	0.8	16.1	13.2	7.3	1.7	10.2	15.2	20.5	85.0
2008	0.7	13.0	13.0	7.1	1.5	9.4	12.5	19.8	77.0
2009	0.6	12.0	12.8	7.2	1.5	9.5	14.0	18.4	76.0
2010	0.5	11.5	13.2	6.8	1.1	9.0	13.0	17.0	72.1
At July 1									
2004	0.9	14.2	14.0	7.3	3.0	9.5	16.0	21.1	86.0
2005	0.8	15.2	13.4	7.5	2.0	10.3	16.0	21.3	86.5
2006	0.8	16.2	13.1	7.2	1.8	10.8	15.8	21.3	87.0
2007	0.8	16.3	13.5	7.6	1.8	10.4	15.8	21.3	87.5
2008	0.7	14.0	13.5	7.6	1.7	10.0	13.2	19.3	80.0
2009	0.5	11.0	13.0	7.6	1.4	7.5	11.0	18.0	70.0
2010

Table 1-4
Cattle on farms — Nova Scotia

	Bulls, 1 year and over	Beef cows	Dairy cows	Heifers			Steers, 1 year and over	Calves, under 1 year	Total
				Heifers, dairy replacement	Heifers, beef replacement	Heifers, slaughter			
thousands of head									
At January 1									
2004	1.4	26.1	24.0	10.7	5.0	3.6	5.1	29.6	105.5
2005	1.5	25.8	22.9	11.4	3.8	4.0	5.1	29.5	104.0
2006	1.5	25.3	22.3	11.7	3.4	4.3	5.0	28.5	102.0
2007	1.5	25.7	22.2	11.9	3.3	4.3	4.9	27.7	101.5
2008	1.5	22.0	23.5	12.5	3.4	4.9	5.9	27.3	101.0
2009	1.6	21.7	23.0	12.0	3.2	4.5	5.8	27.2	99.0
2010	1.4	19.5	21.5	11.1	2.7	5.0	6.0	21.5	88.7
At July 1									
2004	1.5	26.5	23.0	11.7	4.5	3.6	5.3	29.9	106.0
2005	1.5	26.2	22.6	12.0	3.8	4.3	5.6	29.5	105.5
2006	1.5	25.9	22.0	12.2	3.6	4.5	5.6	28.7	104.0
2007	1.4	24.7	22.7	12.5	3.3	3.9	5.0	28.5	102.0
2008	1.4	24.8	22.7	12.3	3.4	4.0	5.1	28.3	102.0
2009	1.2	20.0	22.2	11.5	3.0	4.0	4.9	22.0	88.8
2010

Table 1-5
Cattle on farms — New Brunswick

	Bulls, 1 year and over	Beef cows	Dairy cows	Heifers			Steers, 1 year and over	Calves, under 1 year	Total
				Heifers, dairy replacement	Heifers, beef replacement	Heifers, slaughter			
thousands of head									
At January 1									
2004	1.2	19.4	19.2	10.0	4.0	4.2	6.5	25.5	90.0
2005	1.2	19.5	19.3	10.0	4.1	4.5	6.2	25.2	90.0
2006	1.2	21.2	18.9	9.5	3.3	4.1	5.4	25.4	89.0
2007	1.2	21.5	19.0	9.5	3.0	3.8	5.0	25.0	88.0
2008	1.0	18.7	18.8	9.4	2.5	3.0	4.1	23.5	81.0
2009	1.1	19.1	19.0	9.2	2.7	3.4	4.7	23.8	83.0
2010	1.1	19.5	19.5	10.0	3.0	3.8	4.7	22.8	84.4
At July 1									
2004	1.2	20.3	19.0	9.8	4.8	4.4	6.3	26.2	92.0
2005	1.2	20.6	19.5	9.5	4.0	4.5	6.4	26.3	92.0
2006	1.2	22.2	19.0	9.6	2.8	3.9	5.2	25.6	89.5
2007	1.1	22.0	19.1	9.3	2.9	3.0	4.3	25.3	87.0
2008	1.0	20.8	19.0	9.3	2.8	3.2	4.5	23.9	84.5
2009	1.0	20.7	18.9	8.5	2.9	3.1	5.0	22.0	82.1
2010

Table 1-6
Cattle on farms — Atlantic

	Bulls, 1 year and over	Beef cows	Dairy cows	Heifers			Steers, 1 year and over	Calves, under 1 year	Total
				Heifers, dairy replacement	Heifers, beef replacement	Heifers, slaughter			
thousands of head									
At January 1									
2004	3.5	59.4	62.4	29.8	12.2	17.5	27.8	77.3	289.9
2005	3.6	60.6	61.6	30.8	10.8	17.5	26.9	76.7	288.5
2006	3.6	63.2	60.6	30.6	8.8	18.8	26.0	76.6	288.2
2007	3.6	64.1	60.8	30.6	8.1	18.5	25.2	75.6	286.5
2008	3.3	54.4	62.0	31.1	7.5	17.4	22.6	73.2	271.5
2009	3.4	53.5	61.4	30.6	7.5	17.5	24.6	71.9	270.4
2010	3.1	51.0	60.4	30.3	6.9	17.8	23.7	63.9	257.1
At July 1									
2004	3.7	61.7	61.6	30.8	12.4	17.6	27.7	79.2	294.7
2005	3.6	62.7	61.6	30.9	9.9	19.3	28.1	79.3	295.4
2006	3.6	65.1	60.4	31.0	8.3	19.4	26.7	77.9	292.4
2007	3.4	63.6	62.1	31.7	8.1	17.4	25.2	77.5	289.0
2008	3.2	60.2	61.7	31.4	8.0	17.3	22.9	74.1	278.8
2009	2.8	52.2	60.3	29.7	7.4	14.7	21.0	64.6	252.7
2010

Table 1-7
Cattle on farms — Quebec

	Bulls, 1 year and over	Beef cows	Dairy cows	Heifers			Steers, 1 year and over	Calves, under 1 year	Total
				Heifers, dairy replacement	Heifers, beef replacement	Heifers, slaughter			
thousands of head									
At January 1									
2004	16.0	231.0	397.0	169.0	30.0	27.0	79.0	471.0	1,420.0
2005	15.5	238.0	399.0	178.0	26.0	27.0	100.0	431.5	1,415.0
2006	14.4	225.0	390.0	182.0	21.0	29.0	98.0	425.6	1,385.0
2007	13.0	224.0	384.0	176.0	20.0	31.0	109.0	408.0	1,365.0
2008	13.5	224.0	375.0	163.0	24.0	26.0	96.0	423.5	1,345.0
2009	14.0	230.0	365.0	149.0	25.0	40.0	99.0	418.0	1,340.0
2010	13.0	222.0	364.0	150.5	21.0	30.0	94.0	415.5	1,310.0
At July 1									
2004	16.0	236.0	410.0	181.0	34.0	28.0	112.0	498.0	1,515.0
2005	16.0	233.0	382.0	176.0	30.5	31.0	108.5	478.0	1,455.0
2006	13.5	226.5	382.5	180.0	25.0	30.0	110.0	457.5	1,425.0
2007	14.0	227.0	367.0	166.0	25.0	37.0	111.0	448.0	1,395.0
2008	13.5	225.0	367.0	157.0	27.0	33.5	111.0	441.0	1,375.0
2009	14.0	227.0	366.0	147.5	30.0	35.0	118.5	442.0	1,380.0
2010

**Table 1-8
Cattle on farms — Ontario**

	Bulls, 1 year and over	Beef cows	Dairy cows	Heifers			Steers, 1 year and over	Calves, under 1 year	Total
				Heifers, dairy replacement	Heifers, beef replacement	Heifers, slaughter			
thousands of head									
At January 1									
2004	26.0	415.0	355.5	198.0	65.0	149.0	256.5	660.1	2,125.1
2005	25.0	405.0	344.8	205.0	53.0	153.5	256.6	608.6	2,051.5
2006	25.5	389.0	334.0	185.0	58.5	170.0	234.8	585.0	1,981.8
2007	20.0	364.0	327.0	176.0	44.0	146.0	220.0	606.5	1,903.5
2008	21.5	370.0	320.0	174.0	48.5	135.0	253.0	561.5	1,883.5
2009	22.5	339.0	320.0	171.0	42.5	110.0	200.0	499.6	1,704.6
2010	22.0	333.0	320.5	170.0	45.5	129.0	240.0	482.9	1,742.9
At July 1									
2004	26.0	410.0	348.5	200.0	70.0	173.0	360.5	592.3	2,180.3
2005	26.5	400.0	346.0	194.0	60.0	165.0	352.8	610.3	2,154.6
2006	24.5	380.0	330.0	189.5	50.0	180.0	330.6	548.0	2,032.6
2007	23.5	369.0	320.5	181.0	49.0	165.0	327.0	521.0	1,956.0
2008	22.0	357.2	320.1	179.1	53.1	145.2	306.0	498.5	1,881.2
2009	21.0	336.0	321.0	172.0	55.0	152.0	310.0	460.3	1,827.3
2010

**Table 1-9
Cattle on farms — East**

	Bulls, 1 year and over	Beef cows	Dairy cows	Heifers			Steers, 1 year and over	Calves, under 1 year	Total
				Heifers, dairy replacement	Heifers, beef replacement	Heifers, slaughter			
thousands of head									
At January 1									
2004	45.5	705.4	814.9	396.8	107.2	193.5	363.3	1,208.4	3,835.0
2005	44.1	703.6	805.4	413.8	89.8	198.0	383.5	1,116.8	3,755.0
2006	43.5	677.2	784.6	397.6	88.3	217.8	358.8	1,087.2	3,655.0
2007	36.6	652.1	771.8	382.6	72.1	195.5	354.2	1,090.1	3,555.0
2008	38.3	648.4	757.0	368.1	80.0	178.4	371.6	1,058.2	3,500.0
2009	39.9	622.5	746.4	350.6	75.0	167.5	323.6	989.5	3,315.0
2010	38.1	606.0	744.9	350.8	73.4	176.8	357.7	962.3	3,310.0
At July 1									
2004	45.7	707.7	820.1	411.8	116.4	218.6	500.2	1,169.5	3,990.0
2005	46.1	695.7	789.6	400.9	100.4	215.3	489.4	1,167.6	3,905.0
2006	41.6	671.6	772.9	400.5	83.3	229.4	467.3	1,083.4	3,750.0
2007	40.9	659.6	749.6	378.7	82.1	219.4	463.2	1,046.5	3,640.0
2008	38.7	642.4	748.8	367.5	88.1	196.0	439.9	1,013.6	3,535.0
2009	37.8	615.2	747.3	349.2	92.4	201.7	449.5	966.9	3,460.0
2010

**Table 1-10
Cattle on farms — Manitoba**

	Bulls, 1 year and over	Beef cows	Dairy cows	Heifers			Steers, 1 year and over	Calves, under 1 year	Total
				Heifers, dairy replacement	Heifers, beef replacement	Heifers, slaughter			
thousands of head									
At January 1									
2004	30.0	638.0	42.0	20.0	80.0	54.0	77.0	509.0	1,450.0
2005	31.5	650.0	44.0	18.0	80.0	55.0	70.0	541.5	1,490.0
2006	30.5	673.0	45.0	19.0	77.0	60.0	60.0	525.5	1,490.0
2007	28.0	623.0	44.5	18.5	62.0	47.0	45.0	507.0	1,375.0
2008	27.0	614.5	44.0	19.5	62.0	52.0	49.0	487.0	1,355.0
2009	26.0	575.0	45.0	23.0	69.0	38.0	45.0	459.0	1,280.0
2010	25.0	558.0	46.0	22.5	60.5	41.0	56.0	421.0	1,230.0
At July 1									
2004	33.0	650.0	42.0	23.0	96.0	107.0	155.0	624.0	1,730.0
2005	33.0	676.0	43.5	22.5	95.0	108.5	110.5	646.0	1,735.0
2006	32.0	680.0	44.0	20.0	80.0	90.0	100.0	634.0	1,680.0
2007	28.5	612.0	45.0	20.5	72.0	105.0	95.0	562.0	1,540.0
2008	29.0	601.0	46.0	21.0	78.0	74.5	90.5	575.0	1,515.0
2009	27.0	550.0	45.5	21.5	73.0	87.0	99.0	527.0	1,430.0
2010

**Table 1-11
Cattle on farms — Saskatchewan**

	Bulls, 1 year and over	Beef cows	Dairy cows	Heifers			Steers, 1 year and over	Calves, under 1 year	Total
				Heifers, dairy replacement	Heifers, beef replacement	Heifers, slaughter			
thousands of head									
At January 1									
2004	68.0	1,426.0	31.5	14.5	185.0	51.0	75.0	1,004.0	2,855.0
2005	70.0	1,535.0	31.0	14.0	176.0	49.0	71.0	1,094.0	3,040.0
2006	69.0	1,560.0	29.0	12.0	183.0	47.0	73.0	977.0	2,950.0
2007	64.0	1,484.5	28.5	12.0	170.0	52.0	79.0	1,040.0	2,930.0
2008	65.5	1,480.0	29.0	12.5	176.0	48.0	83.0	976.0	2,870.0
2009	67.0	1,390.0	29.0	13.0	155.0	32.0	86.0	878.0	2,650.0
2010	64.0	1,380.0	30.0	15.0	155.0	50.0	91.0	1,015.0	2,800.0
At July 1									
2004	74.0	1,500.0	31.0	14.0	222.0	130.0	197.0	1,372.0	3,540.0
2005	75.0	1,545.0	29.5	13.5	245.0	122.0	165.0	1,430.0	3,625.0
2006	72.0	1,508.0	28.5	12.5	206.0	90.0	145.0	1,388.0	3,450.0
2007	70.0	1,480.0	30.0	14.0	190.0	105.0	175.0	1,366.0	3,430.0
2008	72.0	1,420.0	30.0	15.0	185.0	130.0	187.0	1,346.0	3,385.0
2009	73.0	1,410.0	29.5	13.5	187.0	120.0	220.0	1,257.0	3,310.0
2010

Table 1-12
Cattle on farms — Alberta

	Bulls, 1 year and over	Beef cows	Dairy cows	Heifers			Steers, 1 year and over	Calves, under 1 year	Total
				Heifers, dairy replacement	Heifers, beef replacement	Heifers, slaughter			
thousands of head									
At January 1									
2004	110.0	1,960.0	86.5	35.0	270.5	558.0	635.0	2,020.0	5,675.0
2005	110.0	2,090.0	83.0	36.0	255.0	630.0	595.0	2,131.0	5,930.0
2006	105.0	2,052.0	85.5	36.5	245.0	647.0	625.0	2,104.0	5,900.0
2007	101.5	2,000.0	79.5	35.0	253.0	657.0	637.0	1,917.0	5,680.0
2008	101.5	1,990.0	83.5	36.0	245.0	690.0	575.0	1,839.0	5,560.0
2009	98.0	1,850.0	87.0	37.0	210.0	575.0	580.0	1,943.0	5,380.0
2010	91.0	1,730.0	89.0	37.0	200.0	624.0	620.0	1,759.0	5,150.0
At July 1									
2004	113.0	2,150.0	82.0	39.0	320.0	765.0	780.0	2,151.0	6,400.0
2005	119.0	2,200.0	85.0	38.0	352.0	825.0	830.0	2,251.0	6,700.0
2006	105.0	2,025.0	82.0	38.0	278.0	812.0	888.0	2,072.0	6,300.0
2007	108.0	2,076.0	83.0	38.0	284.0	835.0	1,000.0	1,986.0	6,410.0
2008	105.0	1,955.0	86.0	40.0	267.0	750.0	805.0	2,002.0	6,010.0
2009	96.0	1,790.0	88.5	40.5	250.0	785.0	845.0	1,935.0	5,830.0
2010

Table 1-13
Cattle on farms — British Columbia

	Bulls, 1 year and over	Beef cows	Dairy cows	Heifers			Steers, 1 year and over	Calves, under 1 year	Total
				Heifers, dairy replacement	Heifers, beef replacement	Heifers, slaughter			
thousands of head									
At January 1									
2004	16.0	290.0	80.0	38.0	45.0	14.0	53.0	204.0	740.0
2005	17.0	305.0	78.0	36.0	37.0	13.0	40.0	184.0	710.0
2006	16.0	285.0	75.0	30.0	35.0	15.0	30.0	174.0	660.0
2007	14.5	260.5	70.5	32.0	30.0	12.0	30.0	165.5	615.0
2008	14.5	249.0	70.8	35.0	32.0	14.5	23.0	171.2	610.0
2009	13.0	212.0	71.1	32.0	28.0	12.0	23.0	163.9	555.0
2010	12.0	197.0	71.1	33.4	27.5	8.0	16.0	160.0	525.0
At July 1									
2004	19.0	327.0	78.0	35.0	51.0	32.0	73.0	335.0	950.0
2005	18.0	319.5	77.5	32.5	48.5	35.0	63.0	321.0	915.0
2006	17.0	280.0	73.0	35.5	43.5	26.0	55.0	290.0	820.0
2007	16.0	277.0	70.6	36.5	40.0	25.0	57.0	282.9	805.0
2008	16.5	244.0	71.0	33.0	36.5	25.0	54.0	270.0	750.0
2009	14.5	223.0	72.0	34.5	36.0	28.0	51.0	246.0	705.0
2010

Table 1-14
Cattle on farms — West

	Bulls, 1 year and over	Beef cows	Dairy cows	Heifers			Steers, 1 year and over	Calves, under 1 year	Total
				Heifers, dairy replacement	Heifers, beef replacement	Heifers, slaughter			
thousands of head									
At January 1									
2004	224.0	4,314.0	240.0	107.5	580.5	677.0	840.0	3,737.0	10,720.0
2005	228.5	4,580.0	236.0	104.0	548.0	747.0	776.0	3,950.5	11,170.0
2006	220.5	4,570.0	234.5	97.5	540.0	769.0	788.0	3,780.5	11,000.0
2007	208.0	4,368.0	223.0	97.5	515.0	768.0	791.0	3,629.5	10,600.0
2008	208.5	4,333.5	227.3	103.0	515.0	804.5	730.0	3,473.2	10,395.0
2009	204.0	4,027.0	232.1	105.0	462.0	657.0	734.0	3,443.9	9,865.0
2010	192.0	3,865.0	236.1	107.9	443.0	723.0	783.0	3,355.0	9,705.0
At July 1									
2004	239.0	4,627.0	233.0	111.0	689.0	1,034.0	1,205.0	4,482.0	12,620.0
2005	245.0	4,740.5	235.5	106.5	740.5	1,090.5	1,168.5	4,648.0	12,975.0
2006	226.0	4,493.0	227.5	106.0	607.5	1,018.0	1,188.0	4,384.0	12,250.0
2007	222.5	4,445.0	228.6	109.0	586.0	1,070.0	1,327.0	4,196.9	12,185.0
2008	222.5	4,220.0	233.0	109.0	566.5	979.5	1,136.5	4,193.0	11,660.0
2009	210.5	3,973.0	235.5	110.0	546.0	1,020.0	1,215.0	3,965.0	11,275.0
2010

Table 2-1
Cows born prior to 1999 — Total Cows

	Newfoundland and Labrador	Prince Edward Island	Nova Scotia	New Brunswick	Atlantic provinces	Quebec	Ontario	Eastern provinces
thousands of head								
At January 1								
2007	0.3	5.1	12.3	8.3	26.0	103.7	156.9	286.6
2008	0.3	3.7	6.1	5.3	15.4	96.5	128.0	239.9
2009	0.2	3.9	6.6	5.7	16.4	55.1	75.6	147.1
2010	0.2	2.0	3.7	4.1	10.0	36.8	53.4	100.2
At July 1								
2007	0.2	5.0	8.5	9.6	23.3	78.9	101.2	203.4
2008	0.2	3.5	7.1	5.7	16.5	61.2	82.6	160.3
2009	0.2	2.1	5.1	5.1	12.5	49.6	74.5	136.6
2010
	Manitoba	Saskatchewan	Alberta	British Columbia	Western provinces	Canada		
thousands of head								
At January 1								
2007	196.0	415.5	537.9	69.4	1,218.8	1,505.4		
2008	164.2	365.2	500.1	65.9	1,095.4	1,335.3		
2009	93.8	195.8	243.2	27.5	560.3	707.4		
2010	61.9	124.7	173.9	20.4	380.9	481.1		
At July 1								
2007	153.5	312.3	429.0	59.8	954.6	1,158.0		
2008	122.5	255.2	344.9	40.1	762.7	923.0		
2009	83.6	168.7	217.0	24.1	493.4	630.0		
2010		

Table 2-2
Cows born prior to 1999 — Dairy Cows

	Newfoundland and Labrador	Prince Edward Island	Nova Scotia	New Brunswick	Atlantic provinces	Quebec	Ontario	Eastern provinces
thousands of head								
At January 1								
2007	0.3	1.5	2.8	1.7	6.3	41.9	27.4	75.6
2008	0.2	0.8	1.0	1.1	3.1	33.8	24.4	61.3
2009	0.1	1.0	1.2	1.3	3.6	12.8	11.2	27.6
2010	0.1	0.3	0.6	0.6	1.6	7.3	5.1	14.0
At July 1								
2007	0.1	1.1	1.2	1.3	3.7	26.0	16.3	46.0
2008	0.1	0.7	0.8	0.9	2.5	18.0	11.2	31.7
2009	0.1	0.4	0.9	0.8	2.2	11.0	10.7	23.9
2010
	Manitoba	Saskatchewan	Alberta	British Columbia	Western provinces	Canada		
thousands of head								
At January 1								
2007	4.3	2.8	8.8	4.3	20.2	95.8		
2008	4.4	2.6	6.7	4.9	18.6	79.9		
2009	1.8	1.2	2.7	2.1	7.8	35.4		
2010	0.5	0.5	0.9	0.7	2.6	16.6		
At July 1								
2007	3.5	1.5	4.0	3.0	12.0	58.0		
2008	2.3	1.0	2.8	2.3	8.4	40.1		
2009	1.2	0.9	2.2	1.8	6.1	30.0		
2010		

Table 2-3
Cows born prior to 1999 — Beef Cows

	Newfoundland and Labrador	Prince Edward Island	Nova Scotia	New Brunswick	Atlantic provinces	Quebec	Ontario	Eastern provinces
thousands of head								
At January 1								
2007	0.0	3.6	9.5	6.6	19.7	61.8	129.5	211.0
2008	0.1	2.9	5.1	4.2	12.3	62.7	103.6	178.6
2009	0.1	2.9	5.4	4.4	12.8	42.3	64.4	119.5
2010	0.1	1.7	3.1	3.5	8.4	29.5	48.3	86.2
At July 1								
2007	0.1	3.9	7.3	8.3	19.6	52.9	84.9	157.4
2008	0.1	2.8	6.3	4.8	14.0	43.2	71.4	128.6
2009	0.1	1.7	4.2	4.3	10.3	38.6	63.8	112.7
2010
	Manitoba	Saskatchewan	Alberta	British Columbia	Western provinces	Canada		
thousands of head								
At January 1								
2007	191.7	412.7	529.1	65.1	1,198.6	1,409.6		
2008	159.8	362.6	493.4	61.0	1,076.8	1,255.4		
2009	92.0	194.6	240.5	25.4	552.5	672.0		
2010	61.4	124.2	173.0	19.7	378.3	464.5		
At July 1								
2007	150.0	310.8	425.0	56.8	942.6	1,100.0		
2008	120.2	254.2	342.1	37.8	754.3	882.9		
2009	82.4	167.8	214.8	22.3	487.3	600.0		
2010		

Table 3
Feeder cattle by weight category, at January 1, 2010

	Newfoundland and Labrador	Prince Edward Island	Nova Scotia	New Brunswick	Atlantic provinces	Quebec	Ontario	Eastern provinces
thousands of head								
Total feeders	0.0	22.0	11.0	8.5	41.5	124.0	369.0	534.5
Total heavy weight	0.0	7.3	1.7	2.4	11.4	46.1	152.8	210.3
Total medium weight	0.0	7.0	3.5	2.4	12.9	35.6	131.3	179.8
Total light weight	0.0	7.7	5.8	3.7	17.2	42.3	84.9	144.4
Total feeder heifers	0.0	9.0	5.0	3.8	17.8	30.0	129.0	176.8
Feeder heifers 1100 pounds (500 kilograms) and over	0.0	3.1	0.8	1.4	5.3	12.3	56.8	74.4
Feeder heifers 900 to 1100 pounds (409 to 500 kilograms)	0.0	3.0	1.8	0.8	5.6	9.3	49.7	64.6
Feeder heifers 900 pounds (409 kilograms) or less	0.0	2.9	2.4	1.6	6.9	8.4	22.5	37.8
Total steers	0.0	13.0	6.0	4.7	23.7	94.0	240.0	357.7
Steers 1250 pounds (568 kilograms) and over	0.0	4.2	0.9	1.0	6.1	33.8	96.0	135.9
Steers 1000 to 1250 pounds (455 to 568 kilograms)	0.0	4.0	1.7	1.6	7.3	26.3	81.6	115.2
Steers 1000 pounds (455 kilograms) or less	0.0	4.8	3.4	2.1	10.3	33.9	62.4	106.6
Feeders on finishing ration	0.0	11.4	3.9	3.0	18.3	84.3	258.3	360.9
Feeders under 21 months	0.0	17.2	9.4	7.1	33.7	95.5	300.7	429.9
	Manitoba	Saskat- chewan	Alberta	British Columbia	Western provinces	Canada		
thousands of head								
Total feeders	97.0	141.0	1,244.0	24.0	1,506.0	2,040.5		
Total heavy weight	26.0	20.0	631.5	8.8	686.3	896.6		
Total medium weight	17.0	41.3	360.7	5.2	424.2	604.0		
Total light weight	54.0	79.7	251.8	10.0	395.5	539.9		
Total feeder heifers	41.0	50.0	624.0	8.0	723.0	899.8		
Feeder heifers 1100 pounds (500 kilograms) and over	13.1	9.5	346.3	4.0	372.9	447.3		
Feeder heifers 900 to 1100 pounds (409 to 500 kilograms)	8.0	15.8	174.7	1.6	200.1	264.7		
Feeder heifers 900 pounds (409 kilograms) or less	19.9	24.7	103.0	2.4	150.0	187.8		
Total steers	56.0	91.0	620.0	16.0	783.0	1,140.7		
Steers 1250 pounds (568 kilograms) and over	12.9	10.5	285.2	4.8	313.4	449.3		
Steers 1000 to 1250 pounds (455 to 568 kilograms)	9.0	25.5	186.0	3.6	224.1	339.3		
Steers 1000 pounds (455 kilograms) or less	34.1	55.0	148.8	7.6	245.5	352.1		
Feeders on finishing ration	44.1	64.2	870.8	6.6	985.7	1,346.6		
Feeders under 21 months	84.4	124.1	845.9	13.2	1,067.6	1,497.5		

Table 3 – continued

Feeder cattle by weight category, at January 1, 2010

	Newfoundland and Labrador	Prince Edward Island	Nova Scotia	New Brunswick	Atlantic provinces	Quebec	Ontario	Eastern provinces
	percent							
Total feeders	...	100.0	100.0	100.0	100.0	100.0	100.0	100.0
Total heavy weight	...	33.2	15.5	28.2	27.5	37.2	41.4	39.3
Total medium weight	...	31.8	31.8	28.2	31.1	28.7	35.6	33.6
Total light weight	...	35.0	52.7	43.5	41.4	34.1	23.0	27.0
Total feeder heifers	...	100.0	100.0	100.0	100.0	100.0	100.0	100.0
Feeder heifers 1100 pounds (500 kilograms) and over	...	34.4	16.0	36.8	29.8	41.0	44.0	42.1
Feeder heifers 900 to 1100 pounds (409 to 500 kilograms)	...	33.3	36.0	21.1	31.5	31.0	38.5	36.5
Feeder heifers 900 pounds (409 kilograms) or less	...	32.2	48.0	42.1	38.8	28.0	17.4	21.4
Total steers	...	100.0	100.0	100.0	100.0	100.0	100.0	100.0
Steers 1250 pounds (568 kilograms) and over	...	32.3	15.0	21.3	25.7	36.0	40.0	38.0
Steers 1000 to 1250 pounds (455 to 568 kilograms)	...	30.8	28.3	34.0	30.8	28.0	34.0	32.2
Steers 1000 pounds (455 kilograms) or less	...	36.9	56.7	44.7	43.5	36.1	26.0	29.8
Feeders on finishing ration	...	51.8	35.5	35.3	44.1	68.0	70.0	67.5
Feeders under 21 months	...	78.2	85.5	83.5	81.2	77.0	81.5	80.4
	Manitoba	Saskat- chewan	Alberta	British Columbia	Western provinces	Canada		
	percent							
Total feeders	100.0	100.0	100.0	100.0	100.0	100.0	100.0	100.0
Total heavy weight	26.8	14.2	50.8	36.7	45.6	43.9	29.6	26.5
Total medium weight	17.5	29.3	29.0	21.7	28.2	29.6	26.5	26.5
Total light weight	55.7	56.5	20.2	41.7	26.3	26.5	26.5	26.5
Total feeder heifers	100.0	100.0	100.0	100.0	100.0	100.0	100.0	100.0
Feeder heifers 1100 pounds (500 kilograms) and over	32.0	19.0	55.5	50.0	51.6	49.7	29.4	20.9
Feeder heifers 900 to 1100 pounds (409 to 500 kilograms)	19.5	31.6	28.0	20.0	27.7	29.4	20.9	20.9
Feeder heifers 900 pounds (409 kilograms) or less	48.5	49.4	16.5	30.0	20.7	20.9	20.9	20.9
Total steers	100.0	100.0	100.0	100.0	100.0	100.0	100.0	100.0
Steers 1250 pounds (568 kilograms) and over	23.0	11.5	46.0	30.0	40.0	39.4	29.7	30.9
Steers 1000 to 1250 pounds (455 to 568 kilograms)	16.1	28.0	30.0	22.5	28.6	29.7	29.7	30.9
Steers 1000 pounds (455 kilograms) or less	60.9	60.4	24.0	47.5	31.4	30.9	30.9	30.9
Feeders on finishing ration	45.5	45.5	70.0	27.5	65.5	66.0	66.0	66.0
Feeders under 21 months	87.0	88.0	68.0	55.0	70.9	73.4	73.4	73.4

Table 4
Cattle, supply and demand

	Newfoundland and Labrador	Prince Edward Island	Nova Scotia	New Brunswick	Atlantic provinces	Canada
thousands of head						
January to June 2004						
Total supply	12.1	101.8	129.5	115.2	358.6	19,841.7
Beginning inventory ¹	10.4	84.0	105.5	90.0	289.9	14,555.0
Calves born	1.7	17.4	24.0	25.2	68.3	4,627.6
Interprovincial imports	0.0	0.4	0.0	0.0	0.4	649.8
International imports	0.0	0.0	0.0	0.0	0.0	9.3
Total demand ¹	12.1	101.8	129.5	115.2	358.6	19,841.7
Slaughter	1.0	13.6	11.4	9.3	35.3	2,146.3
Interprovincial exports	0.0	0.0	8.6	11.9	20.5	649.8
International exports	0.0	0.0	0.0	0.0	0.0	0.0
Deaths and condemnations	0.4	2.2	3.5	2.0	8.1	435.6
Ending inventory ¹	10.7	86.0	106.0	92.0	294.7	16,610.0
July to December 2004						
Total supply	12.7	99.4	122.3	105.6	340.0	18,552.4
Beginning inventory ¹	10.7	86.0	106.0	92.0	294.7	16,610.0
Calves born	2.0	12.2	16.3	13.6	44.1	816.3
Interprovincial imports	0.0	1.2	0.0	0.0	1.2	1,116.7
International imports	0.0	0.0	0.0	0.0	0.0	9.4
Total demand ¹	12.7	99.4	122.3	105.6	340.0	18,552.4
Slaughter	1.3	14.0	13.9	10.6	39.8	2,303.4
Interprovincial exports	0.0	0.0	1.1	2.1	3.2	1,116.7
International exports	0.0	0.0	0.0	0.0	0.0	0.0
Deaths and condemnations	0.4	1.9	3.3	2.9	8.5	207.3
Ending inventory ¹	11.0	83.5	104.0	90.0	288.5	14,925.0
January to June 2005						
Total supply	12.9	103.8	128.3	116.2	361.2	20,369.9
Beginning inventory ¹	11.0	83.5	104.0	90.0	288.5	14,925.0
Calves born	1.9	18.1	24.3	26.0	70.3	4,685.9
Interprovincial imports	0.0	2.2	0.0	0.2	2.4	745.9
International imports	0.0	0.0	0.0	0.0	0.0	13.1
Total demand ¹	12.9	103.8	128.3	116.2	361.2	20,369.9
Slaughter	1.1	15.5	11.4	10.1	38.1	2,286.1
Interprovincial exports	0.0	0.0	8.6	11.9	20.5	745.9
International exports	0.0	0.0	0.0	0.0	0.0	0.0
Deaths and condemnations	0.4	1.8	2.8	2.2	7.2	457.9
Ending inventory ¹	11.4	86.5	105.5	92.0	295.4	16,880.0
July to December 2005						
Total supply	13.5	100.6	121.0	105.1	340.2	18,760.9
Beginning inventory ¹	11.4	86.5	105.5	92.0	295.4	16,880.0
Calves born	2.1	12.6	15.5	13.0	43.2	831.6
Interprovincial imports	0.0	1.5	0.0	0.1	1.6	1,041.3
International imports	0.0	0.0	0.0	0.0	0.0	8.0
Total demand ¹	13.5	100.6	121.0	105.1	340.2	18,760.9
Slaughter	1.4	13.3	14.2	10.1	39.0	2,113.7
Interprovincial exports	0.0	0.0	1.1	2.9	4.0	1,041.3
International exports	0.0	0.0	0.0	0.2	0.2	558.9
Deaths and condemnations	0.4	1.8	3.7	2.9	8.8	392.0
Ending inventory ¹	11.7	85.5	102.0	89.0	288.2	14,655.0
January to June 2006						
Total supply	13.4	103.6	126.8	113.8	357.6	19,791.4
Beginning inventory ¹	11.7	85.5	102.0	89.0	288.2	14,655.0
Calves born	1.7	17.8	24.8	24.8	69.1	4,443.9
Interprovincial imports	0.0	0.3	0.0	0.0	0.3	671.8
International imports	0.0	0.0	0.0	0.0	0.0	20.7
Total demand ¹	13.4	103.6	126.8	113.8	357.6	19,791.4
Slaughter	1.1	14.2	11.0	9.8	36.1	2,025.6
Interprovincial exports	0.0	0.0	8.9	12.4	21.3	671.8
International exports	0.0	0.0	0.0	0.0	0.0	528.0
Deaths and condemnations	0.4	2.4	2.9	2.1	7.8	566.0
Ending inventory ¹	11.9	87.0	104.0	89.5	292.4	16,000.0

See notes at the end of the table.

Table 4 – continued
Cattle, supply and demand

	Newfoundland and Labrador	Prince Edward Island	Nova Scotia	New Brunswick	Atlantic provinces	Canada
thousands of head						
July to December 2006						
Total supply	13.8	99.2	119.4	102.4	334.8	17,996.3
Beginning inventory ¹	11.9	87.0	104.0	89.5	292.4	16,000.0
Calves born	1.9	11.3	15.4	12.9	41.5	902.8
Interprovincial imports	0.0	0.9	0.0	0.0	0.9	1,076.2
International imports	0.0	0.0	0.0	0.0	0.0	17.3
Total demand ¹	13.8	99.2	119.4	102.4	334.8	17,996.3
Slaughter	1.4	12.4	13.3	9.3	36.4	1,946.3
Interprovincial exports	0.0	0.0	1.1	2.5	3.6	1,076.2
International exports	0.0	0.0	0.0	0.0	0.0	503.8
Deaths and condemnations	0.4	1.8	3.5	2.6	8.3	315.0
Ending inventory ¹	12.0	85.0	101.5	88.0	286.5	14,155.0
January to June 2007						
Total supply	14.0	104.3	126.3	112.0	356.6	19,493.0
Beginning inventory ¹	12.0	85.0	101.5	88.0	286.5	14,155.0
Calves born	2.0	17.2	24.8	24.0	68.0	4,613.9
Interprovincial imports	0.0	2.1	0.0	0.0	2.1	693.7
International imports	0.0	0.0	0.0	0.0	0.0	30.4
Total demand ¹	14.0	104.3	126.3	112.0	356.6	19,493.0
Slaughter	1.1	13.2	11.2	9.7	35.2	1,953.1
Interprovincial exports	0.0	1.1	9.7	12.8	23.6	693.7
International exports	0.0	0.0	0.0	0.1	0.1	612.4
Deaths and condemnations	0.4	2.5	3.4	2.4	8.7	408.8
Ending inventory ¹	12.5	87.5	102.0	87.0	289.0	15,825.0
July to December 2007						
Total supply	14.9	96.0	116.2	98.0	325.1	17,673.4
Beginning inventory ¹	12.5	87.5	102.0	87.0	289.0	15,825.0
Calves born	2.0	8.5	14.2	11.0	35.7	926.3
Interprovincial imports	0.4	0.0	0.0	0.0	0.4	899.1
International imports	0.0	0.0	0.0	0.0	0.0	23.0
Total demand ¹	14.9	96.0	116.2	98.0	325.1	17,673.4
Slaughter	1.5	10.5	11.6	8.3	31.9	1,867.3
Interprovincial exports	0.0	6.0	0.2	5.6	11.8	899.1
International exports	0.4	0.0	0.0	0.1	0.5	799.0
Deaths and condemnations	0.5	2.5	3.4	3.0	9.4	213.0
Ending inventory ¹	12.5	77.0	101.0	81.0	271.5	13,895.0
January to June 2008						
Total supply	14.3	94.4	124.6	105.4	338.7	19,058.0
Beginning inventory ¹	12.5	77.0	101.0	81.0	271.5	13,895.0
Calves born	1.8	14.1	23.6	24.4	63.9	4,512.6
Interprovincial imports	0.0	3.3	0.0	0.0	3.3	624.9
International imports	0.0	0.0	0.0	0.0	0.0	25.5
Total demand ¹	14.3	94.4	124.6	105.4	338.7	19,058.0
Slaughter	1.5	10.5	10.7	8.1	30.8	1,903.8
Interprovincial exports	0.0	1.3	8.5	9.9	19.7	624.9
International exports	0.0	0.3	0.1	0.5	0.9	893.2
Deaths and condemnations	0.5	2.3	3.3	2.4	8.5	441.1
Ending inventory ¹	12.3	80.0	102.0	84.5	278.8	15,195.0
July to December 2008						
Total supply	14.3	89.8	115.8	96.0	315.9	17,009.9
Beginning inventory ¹	12.3	80.0	102.0	84.5	278.8	15,195.0
Calves born	2.0	8.5	13.8	11.5	35.8	775.2
Interprovincial imports	0.0	1.3	0.0	0.0	1.3	1,015.9
International imports	0.0	0.0	0.0	0.0	0.0	23.8
Total demand ¹	14.3	89.8	115.8	96.0	315.9	17,009.9
Slaughter	1.5	9.6	12.1	7.8	31.0	1,945.4
Interprovincial exports	0.0	2.0	1.6	2.6	6.2	1,015.9
International exports	0.0	0.1	0.0	0.1	0.2	704.7
Deaths and condemnations	0.4	2.1	3.1	2.5	8.1	163.9
Ending inventory ¹	12.4	76.0	99.0	83.0	270.4	13,180.0

See notes at the end of the table.

Table 4 – continued

Cattle, supply and demand

	Newfoundland and Labrador	Prince Edward Island	Nova Scotia	New Brunswick	Atlantic provinces	Canada
	thousands of head					
January to June 2009						
Total supply	14.1	88.6	118.6	105.0	326.3	18,139.3
Beginning inventory ¹	12.4	76.0	99.0	83.0	270.4	13,180.0
Calves born	1.7	11.6	19.6	22.0	54.9	4,321.0
Interprovincial imports	0.0	1.0	0.0	0.0	1.0	612.1
International imports	0.0	0.0	0.0	0.0	0.0	26.2
Total demand ¹	14.1	88.6	118.6	105.0	326.3	18,139.3
Slaughter	1.8	9.2	12.0	7.5	30.5	1,808.8
Interprovincial exports	0.0	6.8	13.3	12.4	32.5	612.1
International exports	0.0	0.0	0.0	0.0	0.0	602.9
Deaths and condemnations	0.5	2.6	4.5	3.0	10.6	380.5
Ending inventory ¹	11.8	70.0	88.8	82.1	252.7	14,735.0
July to December 2009						
Total supply	13.6	82.4	102.7	94.1	292.8	16,503.3
Beginning inventory ¹	11.8	70.0	88.8	82.1	252.7	14,735.0
Calves born	1.8	9.4	13.9	11.9	37.0	789.1
Interprovincial imports	0.0	3.0	0.0	0.0	3.0	951.6
International imports	0.0	0.0	0.0	0.1	0.1	27.6
Total demand ¹	13.6	82.4	102.7	94.1	292.8	16,503.3
Slaughter	1.3	8.2	10.3	5.6	25.4	1,896.4
Interprovincial exports	0.0	0.5	1.1	2.0	3.6	951.6
International exports	0.0	0.0	0.0	0.0	0.0	490.8
Deaths and condemnations	0.4	1.6	2.6	2.1	6.7	149.5
Ending inventory ¹	11.9	72.1	88.7	84.4	257.1	13,015.0

See notes at the end of the table.

Table 4 – continued
Cattle, supply and demand

	Quebec	Ontario	Eastern provinces	Canada
	thousands of head			
January to June 2004				
Total supply	1,845.7	2,642.8	4,847.1	19,841.7
Beginning inventory ¹	1,420.0	2,125.1	3,835.0	14,555.0
Calves born	342.9	372.3	783.5	4,627.6
Interprovincial imports	76.8	142.1	219.3	649.8
International imports	6.0	3.3	9.3	9.3
Total demand ¹	1,845.7	2,642.8	4,847.1	19,841.7
Slaughter	257.0	387.0	679.3	2,146.3
Interprovincial exports	29.3	21.8	71.6	649.8
International exports	0.0	0.0	0.0	0.0
Deaths and condemnations	44.4	53.7	106.2	435.6
Ending inventory ¹	1,515.0	2,180.3	3,990.0	16,610.0
July to December 2004				
Total supply	1,776.6	2,496.2	4,612.8	18,552.4
Beginning inventory ¹	1,515.0	2,180.3	3,990.0	16,610.0
Calves born	198.7	164.5	407.3	816.3
Interprovincial imports	58.0	146.9	206.1	1,116.7
International imports	4.9	4.5	9.4	9.4
Total demand ¹	1,776.6	2,496.2	4,612.8	18,552.4
Slaughter	293.6	405.4	738.8	2,303.4
Interprovincial exports	30.1	0.1	33.4	1,116.7
International exports	0.0	0.0	0.0	0.0
Deaths and condemnations	37.9	39.2	85.6	207.3
Ending inventory ¹	1,415.0	2,051.5	3,755.0	14,925.0
January to June 2005				
Total supply	1,808.3	2,621.6	4,791.1	20,369.9
Beginning inventory ¹	1,415.0	2,051.5	3,755.0	14,925.0
Calves born	314.7	434.4	819.4	4,685.9
Interprovincial imports	68.6	132.7	203.7	745.9
International imports	10.0	3.0	13.0	13.1
Total demand ¹	1,808.3	2,621.6	4,791.1	20,369.9
Slaughter	280.9	408.7	727.7	2,286.1
Interprovincial exports	28.0	5.5	54.0	745.9
International exports	0.0	0.0	0.0	0.0
Deaths and condemnations	44.4	52.8	104.4	457.9
Ending inventory ¹	1,455.0	2,154.6	3,905.0	16,880.0
July to December 2005				
Total supply	1,741.8	2,489.7	4,571.7	18,760.9
Beginning inventory ¹	1,455.0	2,154.6	3,905.0	16,880.0
Calves born	198.4	152.5	394.1	831.6
Interprovincial imports	82.2	180.8	264.6	1,041.3
International imports	6.2	1.8	8.0	8.0
Total demand ¹	1,741.8	2,489.7	4,571.7	18,760.9
Slaughter	272.3	387.0	698.3	2,113.7
Interprovincial exports	31.5	25.5	61.0	1,041.3
International exports	15.3	35.2	50.7	558.9
Deaths and condemnations	37.7	60.2	106.7	392.0
Ending inventory ¹	1,385.0	1,981.8	3,655.0	14,655.0
January to June 2006				
Total supply	1,774.4	2,535.8	4,667.8	19,791.4
Beginning inventory ¹	1,385.0	1,981.8	3,655.0	14,655.0
Calves born	318.4	410.7	798.2	4,443.9
Interprovincial imports	63.6	132.6	196.5	671.8
International imports	7.4	10.7	18.1	20.7
Total demand ¹	1,774.4	2,535.8	4,667.8	19,791.4
Slaughter	276.9	392.3	705.3	2,025.6
Interprovincial exports	23.2	23.8	68.3	671.8
International exports	10.0	26.3	38.3	528.0
Deaths and condemnations	39.3	58.8	105.9	566.0
Ending inventory ¹	1,425.0	2,032.6	3,750.0	16,000.0

See notes at the end of the table.

Table 4 – continued

Cattle, supply and demand

	Quebec	Ontario	Eastern provinces	Canada
	thousands of head			
July to December 2006				
Total supply	1,724.6	2,345.2	4,404.6	17,996.3
Beginning inventory ¹	1,425.0	2,032.6	3,750.0	16,000.0
Calves born	210.5	144.8	396.8	902.8
Interprovincial imports	77.6	162.3	240.8	1,076.2
International imports	11.5	5.5	17.0	17.3
Total demand ¹	1,724.6	2,345.2	4,404.6	17,996.3
Slaughter	269.8	366.3	672.5	1,946.3
Interprovincial exports	36.2	4.8	44.6	1,076.2
International exports	15.8	23.2	39.0	503.8
Deaths and condemnations	37.8	47.4	93.5	315.0
Ending inventory ¹	1,365.0	1,903.5	3,555.0	14,155.0
January to June 2007				
Total supply	1,738.0	2,439.9	4,534.5	19,493.0
Beginning inventory ¹	1,365.0	1,903.5	3,555.0	14,155.0
Calves born	321.8	436.6	826.4	4,613.9
Interprovincial imports	39.4	81.8	123.3	693.7
International imports	11.8	18.0	29.8	30.4
Total demand ¹	1,738.0	2,439.9	4,534.5	19,493.0
Slaughter	254.1	382.5	671.8	1,953.1
Interprovincial exports	17.1	24.5	65.2	693.7
International exports	32.7	31.2	64.0	612.4
Deaths and condemnations	39.1	45.7	93.5	408.8
Ending inventory ¹	1,395.0	1,956.0	3,640.0	15,825.0
July to December 2007				
Total supply	1,707.5	2,294.3	4,326.9	17,673.4
Beginning inventory ¹	1,395.0	1,956.0	3,640.0	15,825.0
Calves born	211.2	173.3	420.2	926.3
Interprovincial imports	90.3	153.4	244.1	899.1
International imports	11.0	11.6	22.6	23.0
Total demand ¹	1,707.5	2,294.3	4,326.9	17,673.4
Slaughter	249.5	316.1	597.5	1,867.3
Interprovincial exports	35.8	8.6	56.2	899.1
International exports	45.7	54.3	100.5	799.0
Deaths and condemnations	31.5	31.8	72.7	213.0
Ending inventory ¹	1,345.0	1,883.5	3,500.0	13,895.0
January to June 2008				
Total supply	1,728.0	2,432.7	4,499.4	19,058.0
Beginning inventory ¹	1,345.0	1,883.5	3,500.0	13,895.0
Calves born	311.9	426.2	802.0	4,512.6
Interprovincial imports	56.3	112.8	172.4	624.9
International imports	14.8	10.2	25.0	25.5
Total demand ¹	1,728.0	2,432.7	4,499.4	19,058.0
Slaughter	234.3	334.5	599.6	1,903.8
Interprovincial exports	17.1	51.5	88.3	624.9
International exports	62.2	120.6	183.7	893.2
Deaths and condemnations	39.4	44.9	92.8	441.1
Ending inventory ¹	1,375.0	1,881.2	3,535.0	15,195.0
July to December 2008				
Total supply	1,688.8	2,190.5	4,195.2	17,009.9
Beginning inventory ¹	1,375.0	1,881.2	3,535.0	15,195.0
Calves born	208.3	163.5	407.6	775.2
Interprovincial imports	94.8	133.6	229.7	1,015.9
International imports	10.7	12.2	22.9	23.8
Total demand ¹	1,688.8	2,190.5	4,195.2	17,009.9
Slaughter	232.8	324.4	588.2	1,945.4
Interprovincial exports	29.6	44.4	80.2	1,015.9
International exports	61.1	87.2	148.5	704.7
Deaths and condemnations	25.3	29.9	63.3	163.9
Ending inventory ¹	1,340.0	1,704.6	3,315.0	13,180.0

See notes at the end of the table.

Table 4 – continued

Cattle, supply and demand

	Quebec	Ontario	Eastern provinces	Canada
	thousands of head			
January to June 2009				
Total supply	1,698.6	2,262.4	4,287.3	18,139.3
Beginning inventory ¹	1,340.0	1,704.6	3,315.0	13,180.0
Calves born	300.7	440.9	796.5	4,321.0
Interprovincial imports	46.0	104.0	151.0	612.1
International imports	11.9	12.9	24.8	26.2
Total demand ¹	1,698.6	2,262.4	4,287.3	18,139.3
Slaughter	227.9	311.7	570.1	1,808.8
Interprovincial exports	18.1	21.0	71.6	612.1
International exports	33.7	59.1	92.8	602.9
Deaths and condemnations	38.9	43.3	92.8	380.5
Ending inventory ¹	1,380.0	1,827.3	3,460.0	14,735.0
July to December 2009				
Total supply	1,626.7	2,149.1	4,068.6	16,503.3
Beginning inventory ¹	1,380.0	1,827.3	3,460.0	14,735.0
Calves born	187.0	165.1	389.1	789.1
Interprovincial imports	46.9	145.8	195.7	951.6
International imports	12.8	10.9	23.8	27.6
Total demand ¹	1,626.7	2,149.1	4,068.6	16,503.3
Slaughter	220.6	308.0	554.0	1,896.4
Interprovincial exports	35.7	4.2	43.5	951.6
International exports	34.5	64.8	99.3	490.8
Deaths and condemnations	25.9	29.2	61.8	149.5
Ending inventory ¹	1,310.0	1,742.9	3,310.0	13,015.0

See notes at the end of the table.

Table 4 – continued

Cattle, supply and demand

	Manitoba	Saskat- chewan	Alberta	British Columbia	Western provinces	Canada
thousands of head						
January to June 2004						
Total supply	1,943.6	4,123.1	7,848.6	1,079.3	14,994.6	19,841.7
Beginning inventory ¹	1,450.0	2,855.0	5,675.0	740.0	10,720.0	14,555.0
Calves born	469.5	1,248.9	1,813.9	311.8	3,844.1	4,627.6
Interprovincial imports	24.1	19.2	359.7	27.5	430.5	649.8
International imports	0.0	0.0	0.0	0.0	0.0	9.3
Total demand ¹	1,943.6	4,123.1	7,848.6	1,079.3	14,994.6	19,841.7
Slaughter	34.0	169.3	1,232.0	31.7	1,467.0	2,146.3
Interprovincial exports	134.4	320.5	55.7	67.6	578.2	649.8
International exports	0.0	0.0	0.0	0.0	0.0	0.0
Deaths and condemnations	45.2	93.3	160.9	30.0	329.4	435.6
Ending inventory ¹	1,730.0	3,540.0	6,400.0	950.0	12,620.0	16,610.0
July to December 2004						
Total supply	1,814.3	3,784.2	7,329.1	1,012.0	13,939.6	18,552.4
Beginning inventory ¹	1,730.0	3,540.0	6,400.0	950.0	12,620.0	16,610.0
Calves born	51.0	185.1	137.9	35.0	409.0	816.3
Interprovincial imports	33.3	59.1	791.2	27.0	910.6	1,116.7
International imports	0.0	0.0	0.0	0.0	0.0	9.4
Total demand ¹	1,814.3	3,784.2	7,329.1	1,012.0	13,939.6	18,552.4
Slaughter	26.8	223.7	1,280.2	33.9	1,564.6	2,303.4
Interprovincial exports	282.7	491.4	58.9	250.3	1,083.3	1,116.7
International exports	0.0	0.0	0.0	0.0	0.0	0.0
Deaths and condemnations	14.8	29.1	60.0	17.8	121.7	207.3
Ending inventory ¹	1,490.0	3,040.0	5,930.0	710.0	11,170.0	14,925.0
January to June 2005						
Total supply	2,035.2	4,275.3	8,221.9	1,046.4	15,578.8	20,369.9
Beginning inventory ¹	1,490.0	3,040.0	5,930.0	710.0	11,170.0	14,925.0
Calves born	522.9	1,205.9	1,844.2	293.5	3,866.5	4,685.9
Interprovincial imports	22.2	29.4	447.7	42.9	542.2	745.9
International imports	0.1	0.0	0.0	0.0	0.1	13.1
Total demand ¹	2,035.2	4,275.3	8,221.9	1,046.4	15,578.8	20,369.9
Slaughter	39.2	206.0	1,269.7	43.5	1,558.4	2,286.1
Interprovincial exports	209.1	344.7	80.3	57.8	691.9	745.9
International exports	0.0	0.0	0.0	0.0	0.0	0.0
Deaths and condemnations	51.9	99.6	171.9	30.1	353.5	457.9
Ending inventory ¹	1,735.0	3,625.0	6,700.0	915.0	12,975.0	16,880.0
July to December 2005						
Total supply	1,845.5	3,902.7	7,468.4	972.6	14,189.2	18,760.9
Beginning inventory ¹	1,735.0	3,625.0	6,700.0	915.0	12,975.0	16,880.0
Calves born	70.6	207.8	127.1	32.0	437.5	831.6
Interprovincial imports	39.9	69.9	641.3	25.6	776.7	1,041.3
International imports	0.0	0.0	0.0	0.0	0.0	8.0
Total demand ¹	1,845.5	3,902.7	7,468.4	972.6	14,189.2	18,760.9
Slaughter	35.0	206.4	1,130.6	43.4	1,415.4	2,113.7
Interprovincial exports	175.2	492.5	68.2	244.4	980.3	1,041.3
International exports	110.5	177.4	213.4	6.9	508.2	558.9
Deaths and condemnations	34.8	76.4	156.2	17.9	285.3	392.0
Ending inventory ¹	1,490.0	2,950.0	5,900.0	660.0	11,000.0	14,655.0
January to June 2006						
Total supply	2,012.5	4,224.8	7,921.5	964.8	15,123.6	19,791.4
Beginning inventory ¹	1,490.0	2,950.0	5,900.0	660.0	11,000.0	14,655.0
Calves born	499.0	1,190.4	1,693.4	262.9	3,645.7	4,443.9
Interprovincial imports	23.5	84.4	328.1	39.3	475.3	671.8
International imports	0.0	0.0	0.0	2.6	2.6	20.7
Total demand ¹	2,012.5	4,224.8	7,921.5	964.8	15,123.6	19,791.4
Slaughter	38.3	223.0	1,016.4	42.6	1,320.3	2,025.6
Interprovincial exports	147.8	334.8	87.5	33.4	603.5	671.8
International exports	80.5	86.2	284.8	38.2	489.7	528.0
Deaths and condemnations	65.9	130.8	232.8	30.6	460.1	566.0
Ending inventory ¹	1,680.0	3,450.0	6,300.0	820.0	12,250.0	16,000.0

See notes at the end of the table.

Table 4 – continued
Cattle, supply and demand

	Manitoba	Saskat- chewan	Alberta	British Columbia	Western provinces	Canada
thousands of head						
July to December 2006						
Total supply	1,795.5	3,769.2	7,154.9	872.1	13,591.7	17,996.3
Beginning inventory ¹	1,680.0	3,450.0	6,300.0	820.0	12,250.0	16,000.0
Calves born	69.0	248.9	159.7	28.4	506.0	902.8
Interprovincial imports	46.4	70.2	695.2	23.6	835.4	1,076.2
International imports	0.1	0.1	0.0	0.1	0.3	17.3
Total demand ¹	1,795.5	3,769.2	7,154.9	872.1	13,591.7	17,996.3
Slaughter	25.4	217.8	998.4	32.2	1,273.8	1,946.3
Interprovincial exports	280.0	484.4	78.6	188.6	1,031.6	1,076.2
International exports	88.8	75.9	278.1	22.0	464.8	503.8
Deaths and condemnations	26.3	61.1	119.8	14.3	221.5	315.0
Ending inventory ¹	1,375.0	2,930.0	5,680.0	615.0	10,600.0	14,155.0
January to June 2007						
Total supply	1,876.3	4,207.2	7,940.0	935.0	14,958.5	19,493.0
Beginning inventory ¹	1,375.0	2,930.0	5,680.0	615.0	10,600.0	14,155.0
Calves born	473.1	1,226.0	1,803.6	284.8	3,787.5	4,613.9
Interprovincial imports	28.1	51.0	456.2	35.1	570.4	693.7
International imports	0.1	0.2	0.2	0.1	0.6	30.4
Total demand ¹	1,876.3	4,207.2	7,940.0	935.0	14,958.5	19,493.0
Slaughter	29.1	200.3	1,019.4	32.5	1,281.3	1,953.1
Interprovincial exports	153.4	356.0	83.5	35.6	628.5	693.7
International exports	113.6	122.9	272.1	39.8	548.4	612.4
Deaths and condemnations	40.2	98.0	155.0	22.1	315.3	408.8
Ending inventory ¹	1,540.0	3,430.0	6,410.0	805.0	12,185.0	15,825.0
July to December 2007						
Total supply	1,683.6	3,708.4	7,080.8	873.7	13,346.5	17,673.4
Beginning inventory ¹	1,540.0	3,430.0	6,410.0	805.0	12,185.0	15,825.0
Calves born	89.2	225.1	147.7	44.1	506.1	926.3
Interprovincial imports	54.4	53.2	523.0	24.4	655.0	899.1
International imports	0.0	0.1	0.1	0.2	0.4	23.0
Total demand ¹	1,683.6	3,708.4	7,080.8	873.7	13,346.5	17,673.4
Slaughter	23.3	187.5	1,030.9	28.1	1,269.8	1,867.3
Interprovincial exports	124.6	426.9	95.1	196.3	842.9	899.1
International exports	167.2	184.9	319.1	27.3	698.5	799.0
Deaths and condemnations	13.5	39.1	75.7	12.0	140.3	213.0
Ending inventory ¹	1,355.0	2,870.0	5,560.0	610.0	10,395.0	13,895.0
January to June 2008						
Total supply	1,894.8	4,192.1	7,572.4	899.3	14,558.6	19,058.0
Beginning inventory ¹	1,355.0	2,870.0	5,560.0	610.0	10,395.0	13,895.0
Calves born	508.5	1,284.8	1,668.8	248.5	3,710.6	4,512.6
Interprovincial imports	31.2	37.2	343.4	40.7	452.5	624.9
International imports	0.1	0.1	0.2	0.1	0.5	25.5
Total demand ¹	1,894.8	4,192.1	7,572.4	899.3	14,558.6	19,058.0
Slaughter	29.1	210.1	1,033.6	31.4	1,304.2	1,903.8
Interprovincial exports	129.1	306.8	76.1	24.6	536.6	624.9
International exports	181.5	192.6	264.2	71.2	709.5	893.2
Deaths and condemnations	40.1	97.6	188.5	22.1	348.3	441.1
Ending inventory ¹	1,515.0	3,385.0	6,010.0	750.0	11,660.0	15,195.0
July to December 2008						
Total supply	1,649.1	3,566.3	6,781.8	817.5	12,814.7	17,009.9
Beginning inventory ¹	1,515.0	3,385.0	6,010.0	750.0	11,660.0	15,195.0
Calves born	82.1	121.5	123.9	40.1	367.6	775.2
Interprovincial imports	51.9	59.6	647.7	27.0	786.2	1,015.9
International imports	0.1	0.2	0.2	0.4	0.9	23.8
Total demand ¹	1,649.1	3,566.3	6,781.8	817.5	12,814.7	17,009.9
Slaughter	22.9	223.8	1,078.9	31.6	1,357.2	1,945.4
Interprovincial exports	163.9	516.7	69.9	185.2	935.7	1,015.9
International exports	169.8	152.2	199.1	35.1	556.2	704.7
Deaths and condemnations	12.5	23.6	53.9	10.6	100.6	163.9
Ending inventory ¹	1,280.0	2,650.0	5,380.0	555.0	9,865.0	13,180.0

See notes at the end of the table.

Table 4 – continued

Cattle, supply and demand

	Manitoba	Saskatchewan	Alberta	British Columbia	Western provinces	Canada
	thousands of head					
January to June 2009						
Total supply	1,752.1	3,973.6	7,302.8	823.5	13,852.0	18,139.3
Beginning inventory ¹	1,280.0	2,650.0	5,380.0	555.0	9,865.0	13,180.0
Calves born	444.1	1,255.1	1,592.8	232.5	3,524.5	4,321.0
Interprovincial imports	27.9	68.3	329.2	35.7	461.1	612.1
International imports	0.1	0.2	0.8	0.3	1.4	26.2
Total demand ¹	1,752.1	3,973.6	7,302.8	823.5	13,852.0	18,139.3
Slaughter	18.1	177.0	1,022.0	21.6	1,238.7	1,808.8
Interprovincial exports	150.8	290.5	74.6	24.6	540.5	612.1
International exports	118.1	104.8	237.0	50.2	510.1	602.9
Deaths and condemnations	35.1	91.3	139.2	22.1	287.7	380.5
Ending inventory ¹	1,430.0	3,310.0	5,830.0	705.0	11,275.0	14,735.0
July to December 2009						
Total supply	1,546.2	3,517.7	6,596.8	774.0	12,434.7	16,503.3
Beginning inventory ¹	1,430.0	3,310.0	5,830.0	705.0	11,275.0	14,735.0
Calves born	75.6	144.4	139.0	41.0	400.0	789.1
Interprovincial imports	40.5	63.1	627.5	24.8	755.9	951.6
International imports	0.1	0.2	0.3	3.2	3.8	27.6
Total demand ¹	1,546.2	3,517.7	6,596.8	774.0	12,434.7	16,503.3
Slaughter	28.0	127.8	1,171.1	15.5	1,342.4	1,896.4
Interprovincial exports	191.1	449.8	81.5	185.7	908.1	951.6
International exports	84.8	117.0	152.4	37.3	391.5	490.8
Deaths and condemnations	12.3	23.1	41.8	10.5	87.7	149.5
Ending inventory ¹	1,230.0	2,800.0	5,150.0	525.0	9,705.0	13,015.0

1. For the January to June period, the beginning inventory is dated January 1 and the ending inventory is dated July 1. For the July to December period, the beginning inventory is dated July 1 and the ending inventory is dated January 1. The inventory data for each period cannot be aggregated to make an annual total. The inventory data is a count at a specific point in time.

Table 5
Cattle production - Canada

	Farm production				Meat production			
	Total slaughter ¹	Exported alive	Imported alive	Farm production	Total slaughter ¹	Average cold dressed weight ²	Total cold dressed weight ²	Edible offal
	thousands of head				kilograms		thousands of tonnes	tonnes
1979	3,433.8	199.8	19.9	3,613.7	3,433.8	267.3	917.85	32,219
1980	3,525.7	209.8	22.8	3,712.7	3,525.7	266.3	938.78	33,108
1981	3,691.3	184.6	80.3	3,795.6	3,691.3	265.0	978.15	34,657
1982	3,788.1	317.3	71.5	4,033.9	3,788.1	260.4	986.49	35,579
1983	3,708.8	265.9	77.5	3,897.2	3,708.8	267.7	992.75	34,851
1984	3,565.9	294.2	29.9	3,830.2	3,565.9	266.0	948.41	33,508
1985	3,603.0	334.8	51.5	3,886.3	3,603.0	273.5	985.25	33,867
1986	3,511.4	221.0	60.9	3,671.5	3,511.4	280.6	985.15	33,047
1987	3,194.5	234.0	66.0	3,362.5	3,194.5	285.8	912.97	30,108
1988	3,086.3	461.1	31.8	3,515.6	3,086.3	293.8	906.87	29,079
1989	3,121.0	444.9	39.6	3,526.3	3,121.0	291.1	908.40	29,421
1990	2,892.0	822.5	13.4	3,701.1	2,892.0	296.7	857.93	27,236
1991	2,726.1	840.9	43.2	3,523.8	2,726.1	301.8	822.78	25,657
1992	2,834.8	1,240.4	33.2	4,042.0	2,834.8	302.2	856.66	26,717
1993	2,685.0	1,188.1	48.0	3,825.1	2,685.0	306.3	822.31	25,310
1994	2,727.4	982.6	95.1	3,614.9	2,727.4	316.0	861.86	26,860
1995	2,791.3	1,108.8	78.6	3,821.5	2,791.3	318.1	887.91	28,741
1996	3,143.2	1,481.1	46.8	4,577.5	3,143.2	310.5	976.11	33,102
1997	3,257.7	1,331.8	34.7	4,554.8	3,257.7	321.5	1,047.34	35,103
1998	3,405.5	1,288.7	62.4	4,631.8	3,405.5	334.9	1,140.49	36,710
1999	3,587.9	957.5	182.0	4,363.4	3,587.9	340.7	1,222.42	38,721
2000	3,496.8	938.1	260.1	4,174.8	3,496.8	349.6	1,222.63	39,215
2001	3,461.2	1,251.4	223.3	4,489.3	3,461.2	352.8	1,221.01	38,795
2002	3,529.9	1,542.7	60.6	5,012.0	3,529.9	356.8	1,259.44	39,606
2003	3,224.9	479.2	22.6	3,681.5	3,224.9	360.4	1,162.15	26,057
2004	4,072.5	0.0	7.8	4,064.7	4,072.5	357.7	1,456.68	32,921
2005	4,043.1	545.0	4.9	4,583.2	4,043.1	353.7	1,429.90	44,275
2006	3,643.2	1,012.7	19.1	4,636.8	3,643.2	354.6	1,291.73	32,458
2007	3,490.2	1,325.9	30.6	4,785.5	3,490.2	355.0	1,239.03	38,391
2008	3,524.2	1,468.8	28.1	4,964.9	3,524.2	355.0	1,251.11	40,338

1. Commercial slaughter, federally and provincially inspected slaughter and other commercial slaughter.
2. Not including edible offal.

Table 6
Calves production - Canada

	Farm production				Meat production			
	Total slaughter ¹	Exported alive	Imported alive	Farm production	Total slaughter ¹	Average cold dressed weight ²	Total cold dressed weight ²	Edible offal
	thousands of head				kilograms		thousands of tonnes	tonnes
1979	533.3	169.3	5.6	697.0	533.3	55.5	29.61	1,089
1980	531.3	148.8	4.3	675.8	531.3	60.1	31.93	1,085
1981	561.7	166.7	20.2	708.2	561.7	63.2	35.51	1,147
1982	597.7	187.6	14.9	770.4	597.7	64.7	38.66	1,220
1983	618.8	117.2	12.4	723.6	618.8	64.2	39.71	1,263
1984	651.9	112.7	17.7	746.9	651.9	64.9	42.31	1,331
1985	631.8	46.4	6.1	672.1	631.8	68.9	43.54	1,290
1986	591.6	26.9	10.4	608.1	591.6	72.9	43.09	1,208
1987	509.8	33.4	9.3	533.9	509.8	79.3	40.42	1,041
1988	491.4	46.5	4.9	533.0	491.4	82.4	40.51	1,003
1989	502.9	53.9	1.1	555.7	502.9	86.6	43.53	1,027
1990	462.3	61.1	0.6	522.8	462.3	91.2	42.17	944
1991	426.5	88.3	0.3	514.5	426.5	101.2	43.18	870
1992	397.1	67.0	3.4	460.7	397.1	106.1	42.14	811
1993	347.5	47.3	12.6	382.2	347.5	107.4	37.32	709
1994	336.9	34.5	22.1	349.3	336.9	111.6	37.60	726
1995	354.8	26.8	7.9	373.7	354.8	113.6	40.30	764
1996	363.0	31.9	13.3	381.6	363.0	111.3	40.39	823
1997	373.1	49.0	9.2	412.9	373.1	112.9	42.14	846
1998	349.7	26.7	26.7	349.7	349.7	118.5	41.43	793
1999	347.4	28.6	52.8	323.2	347.4	118.3	41.11	788
2000	339.3	26.7	57.4	308.6	339.3	120.3	40.81	770
2001	343.4	55.8	85.3	313.9	343.4	118.3	40.60	779
2002	320.7	145.4	62.5	403.6	320.7	118.8	38.09	728
2003	349.3	26.4	32.0	343.7	349.3	118.7	41.46	792
2004	377.2	0.0	10.9	366.3	377.2	115.2	43.46	856
2005	356.7	13.9	16.2	354.4	356.7	112.4	40.08	809
2006	328.7	19.1	18.9	328.9	328.7	112.5	36.97	746
2007	330.2	85.5	22.8	392.9	330.2	116.7	38.53	749
2008	319.7	129.1	21.0	427.8	319.7	115.6	36.96	725

1. Commercial slaughter, federally and provincially inspected slaughter and other commercial slaughter.
2. Not including edible offal.

Table 7-1
Cattle by farm type — Canada

	On all cattle operations								Total
	Bulls, 1 year and over	Beef cows	Dairy cows	Heifers			Steers, 1 year and over	Calves, under 1 year	
				Heifers, dairy replacement	Heifers, beef replacement	Heifers, slaughter			
	thousands of head								
At January 1									
2004	269.5	5,019.4	1,054.9	504.3	687.7	870.5	1,203.3	4,945.4	14,555.0
2005	272.6	5,283.6	1,041.4	517.8	637.8	945.0	1,159.5	5,067.3	14,925.0
2006	264.0	5,247.2	1,019.1	495.1	628.3	986.8	1,146.8	4,867.7	14,655.0
2007	244.6	5,020.1	994.8	480.1	587.1	963.5	1,145.2	4,719.6	14,155.0
2008	246.8	4,981.9	984.3	471.1	595.0	982.9	1,101.6	4,531.4	13,895.0
2009	243.9	4,649.5	978.5	455.6	537.0	824.5	1,057.6	4,433.4	13,180.0
2010	230.1	4,471.0	981.0	458.7	516.4	899.8	1,140.7	4,317.3	13,015.0
At July 1									
2004	284.7	5,334.7	1,053.1	522.8	805.4	1,252.6	1,705.2	5,651.5	16,610.0
2005	291.1	5,436.2	1,025.1	507.4	840.9	1,305.8	1,657.9	5,815.6	16,880.0
2006	267.6	5,164.6	1,000.4	506.5	690.8	1,247.4	1,655.3	5,467.4	16,000.0
2007	263.4	5,104.6	978.2	487.7	668.1	1,289.4	1,790.2	5,243.4	15,825.0
2008	261.2	4,862.4	981.8	476.5	654.6	1,175.5	1,576.4	5,206.6	15,195.0
2009	248.3	4,588.2	982.8	459.2	638.4	1,221.7	1,664.5	4,931.9	14,735.0
2010
	On dairy operations								
	Bulls, 1 year and over	Beef cows	Dairy cows	Heifers			Steers, 1 year and over	Calves, under 1 year	Total
				Heifers, dairy replacement	Heifers, beef replacement	Heifers, slaughter			
	thousands of head								
At January 1									
2004	14.2	0.0	1,054.9	504.3	0.0	16.8	53.1	570.1	2,213.4
2005	11.8	0.0	1,041.4	517.8	0.0	9.8	41.8	561.6	2,184.2
2006	9.5	0.0	1,019.1	495.1	0.0	12.1	39.3	519.5	2,094.6
2007	8.6	0.0	994.8	480.1	0.0	12.9	37.5	510.6	2,044.5
2008	9.6	0.0	984.3	471.1	0.0	16.6	40.4	496.8	2,018.8
2009	9.1	0.0	978.5	455.6	0.0	12.8	38.1	474.3	1,968.4
2010	8.4	0.0	981.0	458.7	0.0	8.2	35.7	472.0	1,964.0
At July 1									
2004	13.1	0.0	1,053.1	522.8	0.0	15.4	44.4	563.3	2,212.1
2005	12.2	0.0	1,025.1	507.4	0.0	18.6	54.4	524.0	2,141.7
2006	9.8	0.0	1,000.4	506.5	0.0	16.7	41.8	486.2	2,061.4
2007	9.4	0.0	978.2	487.7	0.0	13.0	45.0	462.5	1,995.8
2008	9.9	0.0	981.8	476.5	0.0	11.4	41.6	452.6	1,973.8
2009	8.9	0.0	982.8	459.2	0.0	9.6	41.3	435.7	1,937.5
2010
	On beef operations ¹								
	Bulls, 1 year and over	Beef cows	Dairy cows	Heifers			Steers, 1 year and over	Calves, under 1 year	Total
				Heifers, dairy replacement	Heifers, beef replacement	Heifers, slaughter			
	thousands of head								
At January 1									
2004	255.3	5,019.4	0.0	0.0	687.7	853.8	1,150.1	4,375.7	12,342.0
2005	260.8	5,283.6	0.0	0.0	637.8	935.4	1,117.8	4,505.7	12,741.1
2006	254.5	5,247.2	0.0	0.0	628.3	974.6	1,107.5	4,348.4	12,560.5
2007	236.0	5,020.1	0.0	0.0	587.1	950.6	1,107.7	4,209.0	12,110.5
2008	237.2	4,981.9	0.0	0.0	595.0	966.3	1,061.2	4,034.4	11,876.0
2009	234.8	4,649.5	0.0	0.0	537.0	811.7	1,019.5	3,959.2	11,211.7
2010	221.7	4,471.0	0.0	0.0	516.4	891.6	1,105.0	3,845.6	11,051.3
At July 1									
2004	271.6	5,334.7	0.0	0.0	805.4	1,237.2	1,660.9	5,088.3	14,398.1
2005	278.9	5,436.2	0.0	0.0	840.9	1,287.2	1,603.7	5,291.8	14,738.7
2006	257.8	5,164.6	0.0	0.0	690.8	1,230.7	1,613.5	4,981.0	13,938.4
2007	254.0	5,104.6	0.0	0.0	668.1	1,276.6	1,745.2	4,781.4	13,829.9
2008	251.3	4,862.4	0.0	0.0	654.6	1,164.2	1,534.8	4,754.0	13,221.3
2009	239.4	4,588.2	0.0	0.0	638.4	1,212.1	1,623.2	4,496.6	12,797.9
2010

See notes at the end of the table.

Table 7-1 – continued
Cattle by farm type — Canada

	On cow calf operations								Total
	Bulls, 1 year and over	Beef cows	Dairy cows	Heifers			Steers, 1 year and over	Calves, under 1 year	
				Heifers, dairy replacement	Heifers, beef replacement	Heifers, slaughter			
thousands of head									
At January 1									
2004	238.9	4,680.8	0.0	0.0	618.7	86.0	91.6	3,237.3	8,953.3
2005	241.9	4,916.0	0.0	0.0	584.9	96.5	108.6	3,459.2	9,407.1
2006	236.5	4,888.7	0.0	0.0	573.6	90.5	96.9	3,183.8	9,070.0
2007	219.1	4,670.8	0.0	0.0	538.2	73.5	72.3	3,100.0	8,673.9
2008	219.8	4,619.7	0.0	0.0	541.3	93.3	95.5	2,965.7	8,535.3
2009	219.5	4,356.2	0.0	0.0	486.1	86.0	98.3	2,902.2	8,148.3
2010	206.3	4,170.4	0.0	0.0	477.0	88.5	91.4	2,890.7	7,924.3
At July 1									
2004	223.1	4,405.9	0.0	0.0	645.4	120.0	152.9	4,108.1	9,655.4
2005	231.1	4,529.1	0.0	0.0	689.9	126.2	166.5	4,233.1	9,975.9
2006	218.3	4,396.0	0.0	0.0	572.6	90.0	114.3	4,039.7	9,430.9
2007	212.5	4,286.2	0.0	0.0	539.8	93.6	113.0	3,833.2	9,078.3
2008	207.8	4,038.3	0.0	0.0	517.3	93.4	110.4	3,767.6	8,734.8
2009	199.2	3,841.5	0.0	0.0	499.2	96.3	103.8	3,508.3	8,248.3
2010
	On feeder and stocker operations ²								Total
	Bulls, 1 year and over	Beef cows	Dairy cows	Heifers			Steers, 1 year and over	Calves, under 1 year	
				Heifers, dairy replacement	Heifers, beef replacement	Heifers, slaughter			
thousands of head									
At January 1									
2004	16.4	338.6	0.0	0.0	69.0	350.2	283.9	819.3	1,877.4
2005	18.9	367.6	0.0	0.0	52.9	356.8	274.6	752.9	1,823.7
2006	18.0	358.5	0.0	0.0	54.7	356.0	287.0	848.0	1,922.2
2007	16.9	349.3	0.0	0.0	48.9	373.0	327.3	750.9	1,866.3
2008	17.4	362.2	0.0	0.0	53.7	410.2	274.2	785.5	1,903.2
2009	15.3	293.3	0.0	0.0	50.9	295.7	231.7	657.5	1,544.4
2010	15.4	300.6	0.0	0.0	39.4	383.7	310.9	602.5	1,652.5
At July 1									
2004	48.5	928.8	0.0	0.0	160.0	551.2	616.5	900.2	3,205.2
2005	47.8	907.1	0.0	0.0	151.0	568.5	609.2	948.7	3,232.3
2006	39.5	768.6	0.0	0.0	118.2	539.7	573.2	827.1	2,866.3
2007	41.5	818.4	0.0	0.0	128.3	560.0	647.2	839.2	3,034.6
2008	43.5	824.1	0.0	0.0	137.3	545.5	611.4	818.7	2,980.5
2009	40.2	746.7	0.0	0.0	139.2	541.8	560.9	771.3	2,800.1
2010
	On feeding operations ³								Total
	Bulls, 1 year and over	Beef cows	Dairy cows	Heifers			Steers, 1 year and over	Calves, under 1 year	
				Heifers, dairy replacement	Heifers, beef replacement	Heifers, slaughter			
thousands of head									
At January 1									
2004	0.0	0.0	0.0	0.0	0.0	417.6	774.6	319.1	1,511.3
2005	0.0	0.0	0.0	0.0	0.0	482.1	734.6	293.6	1,510.3
2006	0.0	0.0	0.0	0.0	0.0	528.1	723.6	316.6	1,568.3
2007	0.0	0.0	0.0	0.0	0.0	504.1	708.1	358.1	1,570.3
2008	0.0	0.0	0.0	0.0	0.0	462.8	691.5	283.2	1,437.5
2009	0.0	0.0	0.0	0.0	0.0	430.0	689.5	399.5	1,519.0
2010	0.0	0.0	0.0	0.0	0.0	419.4	702.7	352.4	1,474.5
At July 1									
2004	0.0	0.0	0.0	0.0	0.0	566.0	891.5	80.0	1,537.5
2005	0.0	0.0	0.0	0.0	0.0	592.5	828.0	110.0	1,530.5
2006	0.0	0.0	0.0	0.0	0.0	601.0	926.0	114.2	1,641.2
2007	0.0	0.0	0.0	0.0	0.0	623.0	985.0	109.0	1,717.0
2008	0.0	0.0	0.0	0.0	0.0	525.3	813.0	167.7	1,506.0
2009	0.0	0.0	0.0	0.0	0.0	574.0	958.5	217.0	1,749.5
2010

1. Excluding small numbers of heifers for slaughter and steers on dairy operations.
 2. Farms where cattle are fed on a low energy ration such as hay or pasture.
 3. Farms where cattle are fed a high energy ration such as grain as they are fattened for market.

Table 7-2
Cattle by farm type — Atlantic provinces

	On all cattle operations								Total
	Bulls, 1 year and over	Beef cows	Dairy cows	Heifers			Steers, 1 year and over	Calves, under 1 year	
				Heifers, dairy replacement	Heifers, beef replacement	Heifers, slaughter			
	thousands of head								
At January 1									
2004	3.5	59.4	62.4	29.8	12.2	17.5	27.8	77.3	289.9
2005	3.6	60.6	61.6	30.8	10.8	17.5	26.9	76.7	288.5
2006	3.6	63.2	60.6	30.6	8.8	18.8	26.0	76.6	288.2
2007	3.6	64.1	60.8	30.6	8.1	18.5	25.2	75.6	286.5
2008	3.3	54.4	62.0	31.1	7.5	17.4	22.6	73.2	271.5
2009	3.4	53.5	61.4	30.6	7.5	17.5	24.6	71.9	270.4
2010	3.1	51.0	60.4	30.3	6.9	17.8	23.7	63.9	257.1
At July 1									
2004	3.7	61.7	61.6	30.8	12.4	17.6	27.7	79.2	294.7
2005	3.6	62.7	61.6	30.9	9.9	19.3	28.1	79.3	295.4
2006	3.6	65.1	60.4	31.0	8.3	19.4	26.7	77.9	292.4
2007	3.4	63.6	62.1	31.7	8.1	17.4	25.2	77.5	289.0
2008	3.2	60.2	61.7	31.4	8.0	17.3	22.9	74.1	278.8
2009	2.8	52.2	60.3	29.7	7.4	14.7	21.0	64.6	252.7
2010

	On dairy operations								Total
	Bulls, 1 year and over	Beef cows	Dairy cows	Heifers			Steers, 1 year and over	Calves, under 1 year	
				Heifers, dairy replacement	Heifers, beef replacement	Heifers, slaughter			
	thousands of head								
At January 1									
2004	0.7	0.0	62.4	29.8	0.0	2.6	3.8	24.6	123.9
2005	0.7	0.0	61.6	30.8	0.0	2.6	3.5	24.3	123.5
2006	0.7	0.0	60.6	30.6	0.0	2.9	3.1	24.3	122.2
2007	0.7	0.0	60.8	30.6	0.0	2.9	2.9	24.0	121.9
2008	0.6	0.0	62.0	31.1	0.0	0.6	0.9	22.7	117.9
2009	0.7	0.0	61.4	30.6	0.0	0.7	0.8	22.3	116.5
2010	0.6	0.0	60.4	30.3	0.0	1.0	1.3	20.1	113.7
At July 1									
2004	0.7	0.0	61.6	30.8	0.0	1.0	1.5	23.3	118.9
2005	0.7	0.0	61.6	30.9	0.0	0.6	1.5	21.2	116.5
2006	0.7	0.0	60.4	31.0	0.0	0.6	1.4	20.6	114.7
2007	0.7	0.0	62.1	31.7	0.0	1.1	1.1	21.3	118.0
2008	0.6	0.0	61.7	31.4	0.0	0.3	0.6	19.6	114.2
2009	0.5	0.0	60.3	29.7	0.0	0.7	1.2	17.1	109.5
2010

	On beef operations ¹								Total
	Bulls, 1 year and over	Beef cows	Dairy cows	Heifers			Steers, 1 year and over	Calves, under 1 year	
				Heifers, dairy replacement	Heifers, beef replacement	Heifers, slaughter			
	thousands of head								
At January 1									
2004	2.8	59.4	0.0	0.0	12.2	14.9	24.1	52.9	166.3
2005	2.9	60.6	0.0	0.0	10.8	14.9	23.4	52.4	165.0
2006	2.9	63.2	0.0	0.0	8.8	15.9	22.9	52.3	166.0
2007	2.9	64.1	0.0	0.0	8.1	15.6	22.3	51.7	164.7
2008	2.7	54.4	0.0	0.0	7.5	16.8	21.7	50.5	153.6
2009	2.7	53.5	0.0	0.0	7.5	16.8	23.8	49.6	153.9
2010	2.5	51.0	0.0	0.0	6.9	16.8	22.4	43.9	143.5
At July 1									
2004	3.0	61.7	0.0	0.0	12.4	16.6	26.1	55.9	175.7
2005	2.9	62.7	0.0	0.0	9.9	18.7	26.6	58.1	178.9
2006	2.9	65.1	0.0	0.0	8.3	18.8	25.3	57.3	177.7
2007	2.7	63.6	0.0	0.0	8.1	16.3	24.1	56.2	171.0
2008	2.6	60.2	0.0	0.0	8.0	17.0	22.3	54.6	164.7
2009	2.3	52.2	0.0	0.0	7.4	14.0	19.8	47.5	143.2
2010

See notes at the end of the table.

Table 7-2 – continued

Cattle by farm type — Atlantic provinces

	On cow calf operations								Total
	Bulls, 1 year and over	Beef cows	Dairy cows	Heifers			Steers, 1 year and over	Calves, under 1 year	
				Heifers, dairy replacement	Heifers, beef replacement	Heifers, slaughter			
thousands of head									
At January 1									
2004	2.1	45.7	0.0	0.0	9.8	2.0	2.0	34.2	95.8
2005	2.2	46.7	0.0	0.0	8.4	2.0	1.8	33.9	95.0
2006	2.1	48.7	0.0	0.0	6.3	2.2	1.7	33.8	94.8
2007	2.1	49.4	0.0	0.0	5.5	2.2	1.5	33.4	94.1
2008	2.2	44.6	0.0	0.0	5.8	1.0	0.7	32.4	86.7
2009	2.2	43.9	0.0	0.0	5.8	1.2	1.1	31.8	86.0
2010	2.0	41.8	0.0	0.0	5.3	1.3	1.6	28.3	80.3
At July 1									
2004	2.0	42.0	0.0	0.0	7.8	1.6	1.8	44.3	99.5
2005	1.8	42.6	0.0	0.0	5.2	2.9	4.6	45.1	102.2
2006	1.8	44.3	0.0	0.0	3.4	3.0	4.2	44.5	101.2
2007	1.6	43.2	0.0	0.0	3.3	2.1	2.0	45.2	97.4
2008	1.6	40.9	0.0	0.0	3.5	2.2	2.6	43.1	93.9
2009	1.4	35.5	0.0	0.0	3.5	1.0	1.2	37.2	79.8
2010
	On feeder and stocker operations ²								Total
	Bulls, 1 year and over	Beef cows	Dairy cows	Heifers			Steers, 1 year and over	Calves, under 1 year	
				Heifers, dairy replacement	Heifers, beef replacement	Heifers, slaughter			
thousands of head									
At January 1									
2004	0.7	13.7	0.0	0.0	2.4	6.3	5.5	16.6	45.2
2005	0.7	13.9	0.0	0.0	2.4	6.3	5.0	16.4	44.7
2006	0.8	14.5	0.0	0.0	2.5	7.1	4.6	16.4	45.9
2007	0.8	14.7	0.0	0.0	2.6	6.8	4.2	16.2	45.3
2008	0.5	9.8	0.0	0.0	1.7	9.8	7.0	15.6	44.4
2009	0.5	9.6	0.0	0.0	1.7	9.6	8.7	15.3	45.4
2010	0.5	9.2	0.0	0.0	1.6	8.5	11.8	13.6	45.2
At July 1									
2004	1.0	19.7	0.0	0.0	4.6	7.5	8.8	10.1	51.7
2005	1.1	20.1	0.0	0.0	4.7	8.3	13.0	9.5	56.7
2006	1.1	20.8	0.0	0.0	4.9	8.3	12.1	9.3	56.5
2007	1.1	20.4	0.0	0.0	4.8	7.7	10.1	9.5	53.6
2008	1.0	19.3	0.0	0.0	4.5	8.3	9.7	9.0	51.8
2009	0.9	16.7	0.0	0.0	3.9	6.5	8.6	7.8	44.4
2010
	On feeding operations ³								Total
	Bulls, 1 year and over	Beef cows	Dairy cows	Heifers			Steers, 1 year and over	Calves, under 1 year	
				Heifers, dairy replacement	Heifers, beef replacement	Heifers, slaughter			
thousands of head									
At January 1									
2004	0.0	0.0	0.0	0.0	0.0	6.6	16.6	2.1	25.3
2005	0.0	0.0	0.0	0.0	0.0	6.6	16.6	2.1	25.3
2006	0.0	0.0	0.0	0.0	0.0	6.6	16.6	2.1	25.3
2007	0.0	0.0	0.0	0.0	0.0	6.6	16.6	2.1	25.3
2008	0.0	0.0	0.0	0.0	0.0	6.0	14.0	2.5	22.5
2009	0.0	0.0	0.0	0.0	0.0	6.0	14.0	2.5	22.5
2010	0.0	0.0	0.0	0.0	0.0	7.0	9.0	2.0	18.0
At July 1									
2004	0.0	0.0	0.0	0.0	0.0	7.5	15.5	1.5	24.5
2005	0.0	0.0	0.0	0.0	0.0	7.5	9.0	3.5	20.0
2006	0.0	0.0	0.0	0.0	0.0	7.5	9.0	3.5	20.0
2007	0.0	0.0	0.0	0.0	0.0	6.5	12.0	1.5	20.0
2008	0.0	0.0	0.0	0.0	0.0	6.5	10.0	2.5	19.0
2009	0.0	0.0	0.0	0.0	0.0	6.5	10.0	2.5	19.0
2010

1. Excluding small numbers of heifers for slaughter and steers on dairy operations.
 2. Farms where cattle are fed on a low energy ration such as hay or pasture.
 3. Farms where cattle are fed a high energy ration such as grain as they are fattened for market.

Table 7-3
Cattle by farm type — Quebec

	On all cattle operations								Total
	Bulls, 1 year and over	Beef cows	Dairy cows	Heifers			Steers, 1 year and over	Calves, under 1 year	
				Heifers, dairy replacement	Heifers, beef replacement	Heifers, slaughter			
	thousands of head								
At January 1									
2004	16.0	231.0	397.0	169.0	30.0	27.0	79.0	471.0	1,420.0
2005	15.5	238.0	399.0	178.0	26.0	27.0	100.0	431.5	1,415.0
2006	14.4	225.0	390.0	182.0	21.0	29.0	98.0	425.6	1,385.0
2007	13.0	224.0	384.0	176.0	20.0	31.0	109.0	408.0	1,365.0
2008	13.5	224.0	375.0	163.0	24.0	26.0	96.0	423.5	1,345.0
2009	14.0	230.0	365.0	149.0	25.0	40.0	99.0	418.0	1,340.0
2010	13.0	222.0	364.0	150.5	21.0	30.0	94.0	415.5	1,310.0
At July 1									
2004	16.0	236.0	410.0	181.0	34.0	28.0	112.0	498.0	1,515.0
2005	16.0	233.0	382.0	176.0	30.5	31.0	108.5	478.0	1,455.0
2006	13.5	226.5	382.5	180.0	25.0	30.0	110.0	457.5	1,425.0
2007	14.0	227.0	367.0	166.0	25.0	37.0	111.0	448.0	1,395.0
2008	13.5	225.0	367.0	157.0	27.0	33.5	111.0	441.0	1,375.0
2009	14.0	227.0	366.0	147.5	30.0	35.0	118.5	442.0	1,380.0
2010
	On dairy operations								
	Bulls, 1 year and over	Beef cows	Dairy cows	Heifers			Steers, 1 year and over	Calves, under 1 year	Total
				Heifers, dairy replacement	Heifers, beef replacement	Heifers, slaughter			
	thousands of head								
At January 1									
2004	5.6	0.0	397.0	169.0	0.0	2.9	4.4	230.1	809.0
2005	4.2	0.0	399.0	178.0	0.0	1.2	9.2	229.3	820.9
2006	2.9	0.0	390.0	182.0	0.0	2.9	6.3	225.2	809.3
2007	2.7	0.0	384.0	176.0	0.0	2.3	12.0	208.1	785.1
2008	3.4	0.0	375.0	163.0	0.0	2.8	5.7	211.0	760.9
2009	2.5	0.0	365.0	149.0	0.0	1.2	5.4	200.6	723.7
2010	2.3	0.0	364.0	150.5	0.0	0.7	7.6	198.1	723.2
At July 1									
2004	4.8	0.0	410.0	181.0	0.0	1.7	8.4	229.6	835.5
2005	4.0	0.0	382.0	176.0	0.0	2.5	11.6	214.9	791.0
2006	2.8	0.0	382.5	180.0	0.0	4.4	9.7	209.3	788.7
2007	2.9	0.0	367.0	166.0	0.0	1.3	6.7	197.6	741.5
2008	3.0	0.0	367.0	157.0	0.0	2.8	6.5	186.9	723.2
2009	2.6	0.0	366.0	147.5	0.0	1.0	7.0	182.6	706.7
2010
	On beef operations ¹								
	Bulls, 1 year and over	Beef cows	Dairy cows	Heifers			Steers, 1 year and over	Calves, under 1 year	Total
				Heifers, dairy replacement	Heifers, beef replacement	Heifers, slaughter			
	thousands of head								
At January 1									
2004	10.4	231.0	0.0	0.0	30.0	24.1	74.6	241.0	611.1
2005	11.3	238.0	0.0	0.0	26.0	25.9	90.8	202.2	594.2
2006	11.5	225.0	0.0	0.0	21.0	26.1	91.7	200.4	575.7
2007	10.3	224.0	0.0	0.0	20.0	28.7	97.0	199.9	579.9
2008	10.1	224.0	0.0	0.0	24.0	23.2	90.3	212.4	584.0
2009	11.5	230.0	0.0	0.0	25.0	38.8	93.6	217.4	616.3
2010	10.7	222.0	0.0	0.0	21.0	29.3	86.4	217.4	586.8
At July 1									
2004	11.2	236.0	0.0	0.0	34.0	26.2	103.6	268.5	679.5
2005	12.0	233.0	0.0	0.0	30.5	28.5	96.9	263.1	664.0
2006	10.7	226.5	0.0	0.0	25.0	25.6	100.3	248.1	636.2
2007	11.1	227.0	0.0	0.0	25.0	35.7	104.3	250.5	653.6
2008	10.5	225.0	0.0	0.0	27.0	30.7	104.5	254.0	651.7
2009	11.4	227.0	0.0	0.0	30.0	34.0	111.5	259.5	673.4
2010

See notes at the end of the table.

Table 7-3 – continued
Cattle by farm type — Quebec

	On cow calf operations								Total
	Bulls, 1 year and over	Beef cows	Dairy cows	Heifers			Steers, 1 year and over	Calves, under 1 year	
				Heifers, dairy replacement	Heifers, beef replacement	Heifers, slaughter			
thousands of head									
At January 1									
2004	9.7	214.8	0.0	0.0	26.5	3.8	4.2	207.1	466.1
2005	10.0	210.4	0.0	0.0	22.7	5.1	7.4	171.5	427.1
2006	10.5	205.6	0.0	0.0	18.7	6.5	9.6	169.7	420.6
2007	9.3	200.9	0.0	0.0	16.8	5.5	5.3	164.5	402.3
2008	9.3	204.3	0.0	0.0	21.2	5.2	6.3	177.3	423.6
2009	10.5	210.2	0.0	0.0	21.2	5.1	7.4	187.4	441.8
2010	9.9	202.5	0.0	0.0	18.9	5.4	4.7	184.1	425.5
At July 1									
2004	9.8	207.2	0.0	0.0	27.8	5.1	13.9	234.6	498.4
2005	10.5	204.1	0.0	0.0	24.2	5.8	11.7	228.3	484.6
2006	9.6	203.8	0.0	0.0	20.9	5.5	9.4	224.0	473.2
2007	9.8	198.9	0.0	0.0	20.2	5.2	6.3	221.9	462.3
2008	9.1	197.3	0.0	0.0	22.6	5.1	7.4	224.5	466.0
2009	10.0	199.8	0.0	0.0	22.4	5.6	5.9	222.3	466.0
2010
On feeder and stocker operations ²									
	Bulls, 1 year and over	Beef cows	Dairy cows	Heifers			Steers, 1 year and over	Calves, under 1 year	Total
				Heifers, dairy replacement	Heifers, beef replacement	Heifers, slaughter			
thousands of head									
At January 1									
2004	0.7	16.2	0.0	0.0	3.5	5.3	8.4	15.9	50.0
2005	1.3	27.6	0.0	0.0	3.3	14.8	28.4	16.7	92.1
2006	1.0	19.4	0.0	0.0	2.3	9.6	29.1	18.2	79.6
2007	1.0	23.1	0.0	0.0	3.2	12.7	30.7	11.9	82.6
2008	0.8	19.7	0.0	0.0	2.8	10.7	27.0	12.4	73.4
2009	1.0	19.8	0.0	0.0	3.8	10.7	23.2	12.0	70.5
2010	0.8	19.5	0.0	0.0	2.1	14.7	25.0	14.7	76.8
At July 1									
2004	1.4	28.8	0.0	0.0	6.2	10.1	19.7	21.9	88.1
2005	1.5	28.9	0.0	0.0	6.3	14.7	27.7	23.3	102.4
2006	1.1	22.7	0.0	0.0	4.1	12.1	24.9	13.4	78.3
2007	1.3	28.1	0.0	0.0	4.8	19.5	35.0	22.1	110.8
2008	1.4	27.7	0.0	0.0	4.4	17.8	31.1	20.3	102.7
2009	1.4	27.2	0.0	0.0	7.6	17.4	28.1	22.7	104.4
2010
On feeding operations ³									
	Bulls, 1 year and over	Beef cows	Dairy cows	Heifers			Steers, 1 year and over	Calves, under 1 year	Total
				Heifers, dairy replacement	Heifers, beef replacement	Heifers, slaughter			
thousands of head									
At January 1									
2004	0.0	0.0	0.0	0.0	0.0	15.0	62.0	18.0	95.0
2005	0.0	0.0	0.0	0.0	0.0	6.0	55.0	14.0	75.0
2006	0.0	0.0	0.0	0.0	0.0	10.0	53.0	12.5	75.5
2007	0.0	0.0	0.0	0.0	0.0	10.5	61.0	23.5	95.0
2008	0.0	0.0	0.0	0.0	0.0	7.3	57.0	22.7	87.0
2009	0.0	0.0	0.0	0.0	0.0	23.0	63.0	18.0	104.0
2010	0.0	0.0	0.0	0.0	0.0	9.2	56.7	18.6	84.5
At July 1									
2004	0.0	0.0	0.0	0.0	0.0	11.0	70.0	12.0	93.0
2005	0.0	0.0	0.0	0.0	0.0	8.0	57.5	11.5	77.0
2006	0.0	0.0	0.0	0.0	0.0	8.0	66.0	10.7	84.7
2007	0.0	0.0	0.0	0.0	0.0	11.0	63.0	6.5	80.5
2008	0.0	0.0	0.0	0.0	0.0	7.8	66.0	9.2	83.0
2009	0.0	0.0	0.0	0.0	0.0	11.0	77.5	14.5	103.0
2010

1. Excluding small numbers of heifers for slaughter and steers on dairy operations.
 2. Farms where cattle are fed on a low energy ration such as hay or pasture.
 3. Farms where cattle are fed a high energy ration such as grain as they are fattened for market.

Table 7-4
Cattle by farm type — Ontario

	On all cattle operations								Total
	Bulls, 1 year and over	Beef cows	Dairy cows	Heifers			Steers, 1 year and over	Calves, under 1 year	
				Heifers, dairy replacement	Heifers, beef replacement	Heifers, slaughter			
	thousands of head								
At January 1									
2004	26.0	415.0	355.5	198.0	65.0	149.0	256.5	660.1	2,125.1
2005	25.0	405.0	344.8	205.0	53.0	153.5	256.6	608.6	2,051.5
2006	25.5	389.0	334.0	185.0	58.5	170.0	234.8	585.0	1,981.8
2007	20.0	364.0	327.0	176.0	44.0	146.0	220.0	606.5	1,903.5
2008	21.5	370.0	320.0	174.0	48.5	135.0	253.0	561.5	1,883.5
2009	22.5	339.0	320.0	171.0	42.5	110.0	200.0	499.6	1,704.6
2010	22.0	333.0	320.5	170.0	45.5	129.0	240.0	482.9	1,742.9
At July 1									
2004	26.0	410.0	348.5	200.0	70.0	173.0	360.5	592.3	2,180.3
2005	26.5	400.0	346.0	194.0	60.0	165.0	352.8	610.3	2,154.6
2006	24.5	380.0	330.0	189.5	50.0	180.0	330.6	548.0	2,032.6
2007	23.5	369.0	320.5	181.0	49.0	165.0	327.0	521.0	1,956.0
2008	22.0	357.2	320.1	179.1	53.1	145.2	306.0	498.5	1,881.2
2009	21.0	336.0	321.0	172.0	55.0	152.0	310.0	460.3	1,827.3
2010
	On dairy operations								
	Bulls, 1 year and over	Beef cows	Dairy cows	Heifers			Steers, 1 year and over	Calves, under 1 year	Total
				Heifers, dairy replacement	Heifers, beef replacement	Heifers, slaughter			
	thousands of head								
At January 1									
2004	4.0	0.0	355.5	198.0	0.0	7.8	33.5	192.0	790.8
2005	3.9	0.0	344.8	205.0	0.0	2.6	21.8	184.6	762.7
2006	3.6	0.0	334.0	185.0	0.0	2.8	23.4	164.0	712.8
2007	3.0	0.0	327.0	176.0	0.0	2.2	16.7	177.8	702.7
2008	2.6	0.0	320.0	174.0	0.0	8.1	24.8	168.4	697.9
2009	2.7	0.0	320.0	171.0	0.0	5.4	27.8	163.4	690.3
2010	2.6	0.0	320.5	170.0	0.0	4.6	22.8	152.1	672.6
At July 1									
2004	4.0	0.0	348.5	200.0	0.0	4.6	24.3	194.2	775.6
2005	3.7	0.0	346.0	194.0	0.0	6.9	32.1	185.1	767.8
2006	3.4	0.0	330.0	189.5	0.0	3.6	24.0	171.5	722.0
2007	2.9	0.0	320.5	181.0	0.0	3.8	27.8	161.0	697.0
2008	2.8	0.0	320.1	179.1	0.0	3.6	25.8	161.1	692.5
2009	2.6	0.0	321.0	172.0	0.0	4.3	27.0	152.2	679.1
2010
	On beef operations ¹								
	Bulls, 1 year and over	Beef cows	Dairy cows	Heifers			Steers, 1 year and over	Calves, under 1 year	Total
				Heifers, dairy replacement	Heifers, beef replacement	Heifers, slaughter			
	thousands of head								
At January 1									
2004	22.0	415.0	0.0	0.0	65.0	141.2	222.9	468.1	1,334.2
2005	21.1	405.0	0.0	0.0	53.0	150.9	234.9	424.0	1,288.9
2006	21.9	389.0	0.0	0.0	58.5	167.2	211.4	421.0	1,269.0
2007	17.0	364.0	0.0	0.0	44.0	143.8	203.3	428.7	1,200.8
2008	18.9	370.0	0.0	0.0	48.5	126.9	228.2	393.3	1,185.8
2009	19.8	339.0	0.0	0.0	42.5	104.6	172.2	336.2	1,014.3
2010	19.4	333.0	0.0	0.0	45.5	124.4	217.2	330.9	1,070.4
At July 1									
2004	22.0	410.0	0.0	0.0	70.0	168.5	336.2	398.1	1,404.8
2005	22.8	400.0	0.0	0.0	60.0	158.1	320.7	425.3	1,386.9
2006	21.1	380.0	0.0	0.0	50.0	176.4	306.6	376.5	1,310.6
2007	20.6	369.0	0.0	0.0	49.0	161.2	299.2	360.1	1,259.1
2008	19.2	357.2	0.0	0.0	53.1	141.6	280.2	337.4	1,188.7
2009	18.4	336.0	0.0	0.0	55.0	147.7	283.0	308.2	1,148.3
2010

See notes at the end of the table.

Table 7-4 – continued
Cattle by farm type — Ontario

	On cow calf operations								Total
	Bulls, 1 year and over	Beef cows	Dairy cows	Heifers			Steers, 1 year and over	Calves, under 1 year	
				Heifers, dairy replacement	Heifers, beef replacement	Heifers, slaughter			
thousands of head									
At January 1									
2004	19.1	356.9	0.0	0.0	51.9	27.0	31.4	302.5	788.8
2005	17.3	337.0	0.0	0.0	43.8	21.8	28.4	268.5	716.8
2006	18.1	322.1	0.0	0.0	45.1	19.6	24.6	257.2	686.7
2007	14.5	314.5	0.0	0.0	38.3	17.0	18.2	255.8	658.3
2008	16.3	323.4	0.0	0.0	40.3	26.0	27.7	243.3	677.0
2009	16.6	285.1	0.0	0.0	34.3	24.0	30.2	198.3	588.5
2010	15.9	275.7	0.0	0.0	38.9	25.7	30.0	193.9	580.1
At July 1									
2004	15.7	293.1	0.0	0.0	50.1	14.5	22.1	277.1	672.6
2005	16.3	281.6	0.0	0.0	43.0	13.1	22.3	281.6	657.9
2006	15.3	280.4	0.0	0.0	36.6	11.7	17.9	260.0	621.9
2007	15.5	280.4	0.0	0.0	39.7	9.8	16.1	258.3	619.8
2008	14.3	271.5	0.0	0.0	40.2	12.6	17.1	236.0	591.7
2009	13.6	254.7	0.0	0.0	43.8	13.2	16.2	215.8	557.3
2010
	On feeder and stocker operations ²								
	Bulls, 1 year and over	Beef cows	Dairy cows	Heifers			Steers, 1 year and over	Calves, under 1 year	Total
				Heifers, dairy replacement	Heifers, beef replacement	Heifers, slaughter			
thousands of head									
At January 1									
2004	2.9	58.1	0.0	0.0	13.1	23.2	41.5	108.6	247.4
2005	3.8	68.0	0.0	0.0	9.2	22.1	44.5	99.5	247.1
2006	3.8	66.9	0.0	0.0	13.4	27.6	32.8	125.8	270.3
2007	2.5	49.5	0.0	0.0	5.7	17.8	27.1	113.9	216.5
2008	2.6	46.6	0.0	0.0	8.2	19.9	22.5	101.0	200.8
2009	3.2	53.9	0.0	0.0	8.2	21.6	29.0	94.4	210.3
2010	3.5	57.3	0.0	0.0	6.6	26.7	30.2	101.0	225.3
At July 1									
2004	6.3	116.9	0.0	0.0	19.9	51.0	83.1	100.0	377.2
2005	6.5	118.4	0.0	0.0	17.0	47.0	79.9	116.7	385.5
2006	5.8	99.6	0.0	0.0	13.4	44.7	58.7	91.5	313.7
2007	5.1	88.6	0.0	0.0	9.3	36.4	63.1	79.8	282.3
2008	4.9	85.7	0.0	0.0	12.9	31.5	63.1	81.9	280.0
2009	4.8	81.3	0.0	0.0	11.2	34.5	56.8	82.4	271.0
2010
	On feeding operations ³								
	Bulls, 1 year and over	Beef cows	Dairy cows	Heifers			Steers, 1 year and over	Calves, under 1 year	Total
				Heifers, dairy replacement	Heifers, beef replacement	Heifers, slaughter			
thousands of head									
At January 1									
2004	0.0	0.0	0.0	0.0	0.0	91.0	150.0	57.0	298.0
2005	0.0	0.0	0.0	0.0	0.0	107.0	162.0	56.0	325.0
2006	0.0	0.0	0.0	0.0	0.0	120.0	154.0	38.0	312.0
2007	0.0	0.0	0.0	0.0	0.0	109.0	158.0	59.0	326.0
2008	0.0	0.0	0.0	0.0	0.0	81.0	178.0	49.0	308.0
2009	0.0	0.0	0.0	0.0	0.0	59.0	113.0	43.5	215.5
2010	0.0	0.0	0.0	0.0	0.0	72.0	157.0	36.0	265.0
At July 1									
2004	0.0	0.0	0.0	0.0	0.0	103.0	231.0	21.0	355.0
2005	0.0	0.0	0.0	0.0	0.0	98.0	218.5	27.0	343.5
2006	0.0	0.0	0.0	0.0	0.0	120.0	230.0	25.0	375.0
2007	0.0	0.0	0.0	0.0	0.0	115.0	220.0	22.0	357.0
2008	0.0	0.0	0.0	0.0	0.0	97.5	200.0	19.5	317.0
2009	0.0	0.0	0.0	0.0	0.0	100.0	210.0	10.0	320.0
2010

1. Excluding small numbers of heifers for slaughter and steers on dairy operations.
2. Farms where cattle are fed on a low energy ration such as hay or pasture.
3. Farms where cattle are fed a high energy ration such as grain as they are fattened for market.

Table 7-5
Cattle by farm type — Eastern provinces

	On all cattle operations								Total
	Bulls, 1 year and over	Beef cows	Dairy cows	Heifers			Steers, 1 year and over	Calves, under 1 year	
				Heifers, dairy replacement	Heifers, beef replacement	Heifers, slaughter			
	thousands of head								
At January 1									
2004	45.5	705.4	814.9	396.8	107.2	193.5	363.3	1,208.4	3,835.0
2005	44.1	703.6	805.4	413.8	89.8	198.0	383.5	1,116.8	3,755.0
2006	43.5	677.2	784.6	397.6	88.3	217.8	358.8	1,087.2	3,655.0
2007	36.6	652.1	771.8	382.6	72.1	195.5	354.2	1,090.1	3,555.0
2008	38.3	648.4	757.0	368.1	80.0	178.4	371.6	1,058.2	3,500.0
2009	39.9	622.5	746.4	350.6	75.0	167.5	323.6	989.5	3,315.0
2010	38.1	606.0	744.9	350.8	73.4	176.8	357.7	962.3	3,310.0
At July 1									
2004	45.7	707.7	820.1	411.8	116.4	218.6	500.2	1,169.5	3,990.0
2005	46.1	695.7	789.6	400.9	100.4	215.3	489.4	1,167.6	3,905.0
2006	41.6	671.6	772.9	400.5	83.3	229.4	467.3	1,083.4	3,750.0
2007	40.9	659.6	749.6	378.7	82.1	219.4	463.2	1,046.5	3,640.0
2008	38.7	642.4	748.8	367.5	88.1	196.0	439.9	1,013.6	3,535.0
2009	37.8	615.2	747.3	349.2	92.4	201.7	449.5	966.9	3,460.0
2010
	On dairy operations								
	Bulls, 1 year and over	Beef cows	Dairy cows	Heifers			Steers, 1 year and over	Calves, under 1 year	Total
				Heifers, dairy replacement	Heifers, beef replacement	Heifers, slaughter			
	thousands of head								
At January 1									
2004	10.3	0.0	814.9	396.8	0.0	13.3	41.7	446.7	1,723.7
2005	8.8	0.0	805.4	413.8	0.0	6.4	34.5	438.2	1,707.1
2006	7.2	0.0	784.6	397.6	0.0	8.6	32.8	413.5	1,644.3
2007	6.4	0.0	771.8	382.6	0.0	7.4	31.6	409.9	1,609.7
2008	6.6	0.0	757.0	368.1	0.0	11.5	31.4	402.1	1,576.7
2009	5.9	0.0	746.4	350.6	0.0	7.3	34.0	386.3	1,530.5
2010	5.5	0.0	744.9	350.8	0.0	6.3	31.7	370.3	1,509.5
At July 1									
2004	9.5	0.0	820.1	411.8	0.0	7.3	34.2	447.1	1,730.0
2005	8.4	0.0	789.6	400.9	0.0	10.0	45.2	421.2	1,675.3
2006	6.9	0.0	772.9	400.5	0.0	8.6	35.1	401.4	1,625.4
2007	6.5	0.0	749.6	378.7	0.0	6.2	35.6	379.9	1,556.5
2008	6.4	0.0	748.8	367.5	0.0	6.7	32.9	367.6	1,529.9
2009	5.7	0.0	747.3	349.2	0.0	6.0	35.2	351.9	1,495.3
2010
	On beef operations ¹								
	Bulls, 1 year and over	Beef cows	Dairy cows	Heifers			Steers, 1 year and over	Calves, under 1 year	Total
				Heifers, dairy replacement	Heifers, beef replacement	Heifers, slaughter			
	thousands of head								
At January 1									
2004	35.2	705.4	0.0	0.0	107.2	180.2	321.6	762.0	2,111.6
2005	35.3	703.6	0.0	0.0	89.8	191.7	349.1	678.6	2,048.1
2006	36.3	677.2	0.0	0.0	88.3	209.2	326.0	673.7	2,010.7
2007	30.2	652.1	0.0	0.0	72.1	188.1	322.6	680.3	1,945.4
2008	31.7	648.4	0.0	0.0	80.0	166.9	340.2	656.2	1,923.4
2009	34.0	622.5	0.0	0.0	75.0	160.2	289.6	603.2	1,784.5
2010	32.6	606.0	0.0	0.0	73.4	170.5	326.0	592.2	1,800.7
At July 1									
2004	36.2	707.7	0.0	0.0	116.4	211.3	465.9	722.5	2,260.0
2005	37.7	695.7	0.0	0.0	100.4	205.3	444.2	746.5	2,229.8
2006	34.7	671.6	0.0	0.0	83.3	220.8	432.2	681.9	2,124.5
2007	34.4	659.6	0.0	0.0	82.1	213.2	427.6	666.8	2,083.7
2008	32.3	642.4	0.0	0.0	88.1	189.3	407.0	646.0	2,005.1
2009	32.1	615.2	0.0	0.0	92.4	195.7	414.3	615.2	1,964.9
2010

See notes at the end of the table.

Table 7-5 – continued

Cattle by farm type — Eastern provinces

	On cow calf operations								Total
	Bulls, 1 year and over	Beef cows	Dairy cows	Heifers			Steers, 1 year and over	Calves, under 1 year	
				Heifers, dairy replacement	Heifers, beef replacement	Heifers, slaughter			
thousands of head									
At January 1									
2004	30.9	617.4	0.0	0.0	88.2	32.8	37.6	543.8	1,350.7
2005	29.5	594.1	0.0	0.0	74.9	28.9	37.6	473.9	1,238.9
2006	30.7	576.4	0.0	0.0	70.1	28.3	35.9	460.7	1,202.1
2007	25.9	564.8	0.0	0.0	60.6	24.7	25.0	453.7	1,154.7
2008	27.8	572.3	0.0	0.0	67.3	32.2	34.7	453.0	1,187.3
2009	29.3	539.2	0.0	0.0	61.3	30.3	38.7	417.5	1,116.3
2010	27.8	520.0	0.0	0.0	63.1	32.4	36.3	406.3	1,085.9
At July 1									
2004	27.5	542.3	0.0	0.0	85.7	21.2	37.8	556.0	1,270.5
2005	28.6	528.3	0.0	0.0	72.4	21.8	38.6	555.0	1,244.7
2006	26.7	528.5	0.0	0.0	60.9	20.2	31.5	528.5	1,196.3
2007	26.9	522.5	0.0	0.0	63.2	17.1	24.4	525.4	1,179.5
2008	25.0	509.7	0.0	0.0	66.3	19.9	27.1	503.6	1,151.6
2009	25.0	490.0	0.0	0.0	69.7	19.8	23.3	475.3	1,103.1
2010
	On feeder and stocker operations ²								
	Bulls, 1 year and over	Beef cows	Dairy cows	Heifers			Steers, 1 year and over	Calves, under 1 year	Total
				Heifers, dairy replacement	Heifers, beef replacement	Heifers, slaughter			
thousands of head									
At January 1									
2004	4.3	88.0	0.0	0.0	19.0	34.8	55.4	141.1	342.6
2005	5.8	109.5	0.0	0.0	14.9	43.2	77.9	132.6	383.9
2006	5.6	100.8	0.0	0.0	18.2	44.3	66.5	160.4	395.8
2007	4.3	87.3	0.0	0.0	11.5	37.3	62.0	142.0	344.4
2008	3.9	76.1	0.0	0.0	12.7	40.4	56.5	129.0	318.6
2009	4.7	83.3	0.0	0.0	13.7	41.9	60.9	121.7	326.2
2010	4.8	86.0	0.0	0.0	10.3	49.9	67.0	129.3	347.3
At July 1									
2004	8.7	165.4	0.0	0.0	30.7	68.6	111.6	132.0	517.0
2005	9.1	167.4	0.0	0.0	28.0	70.0	120.6	149.5	544.6
2006	8.0	143.1	0.0	0.0	22.4	65.1	95.7	114.2	448.5
2007	7.5	137.1	0.0	0.0	18.9	63.6	108.2	111.4	446.7
2008	7.3	132.7	0.0	0.0	21.8	57.6	103.9	111.2	434.5
2009	7.1	125.2	0.0	0.0	22.7	58.4	93.5	112.9	419.8
2010
	On feeding operations ³								
	Bulls, 1 year and over	Beef cows	Dairy cows	Heifers			Steers, 1 year and over	Calves, under 1 year	Total
				Heifers, dairy replacement	Heifers, beef replacement	Heifers, slaughter			
thousands of head									
At January 1									
2004	0.0	0.0	0.0	0.0	0.0	112.6	228.6	77.1	418.3
2005	0.0	0.0	0.0	0.0	0.0	119.6	233.6	72.1	425.3
2006	0.0	0.0	0.0	0.0	0.0	136.6	223.6	52.6	412.8
2007	0.0	0.0	0.0	0.0	0.0	126.1	235.6	84.6	446.3
2008	0.0	0.0	0.0	0.0	0.0	94.3	249.0	74.2	417.5
2009	0.0	0.0	0.0	0.0	0.0	88.0	190.0	64.0	342.0
2010	0.0	0.0	0.0	0.0	0.0	88.2	222.7	56.6	367.5
At July 1									
2004	0.0	0.0	0.0	0.0	0.0	121.5	316.5	34.5	472.5
2005	0.0	0.0	0.0	0.0	0.0	113.5	285.0	42.0	440.5
2006	0.0	0.0	0.0	0.0	0.0	135.5	305.0	39.2	479.7
2007	0.0	0.0	0.0	0.0	0.0	132.5	295.0	30.0	457.5
2008	0.0	0.0	0.0	0.0	0.0	111.8	276.0	31.2	419.0
2009	0.0	0.0	0.0	0.0	0.0	117.5	297.5	27.0	442.0
2010

1. Excluding small numbers of heifers for slaughter and steers on dairy operations.
2. Farms where cattle are fed on a low energy ration such as hay or pasture.
3. Farms where cattle are fed a high energy ration such as grain as they are fattened for market.

Table 7-6
Cattle by farm type — Manitoba

	On all cattle operations								Total
	Bulls, 1 year and over	Beef cows	Dairy cows	Heifers			Steers, 1 year and over	Calves, under 1 year	
				Heifers, dairy replacement	Heifers, beef replacement	Heifers, slaughter			
	thousands of head								
At January 1									
2004	30.0	638.0	42.0	20.0	80.0	54.0	77.0	509.0	1,450.0
2005	31.5	650.0	44.0	18.0	80.0	55.0	70.0	541.5	1,490.0
2006	30.5	673.0	45.0	19.0	77.0	60.0	60.0	525.5	1,490.0
2007	28.0	623.0	44.5	18.5	62.0	47.0	45.0	507.0	1,375.0
2008	27.0	614.5	44.0	19.5	62.0	52.0	49.0	487.0	1,355.0
2009	26.0	575.0	45.0	23.0	69.0	38.0	45.0	459.0	1,280.0
2010	25.0	558.0	46.0	22.5	60.5	41.0	56.0	421.0	1,230.0
At July 1									
2004	33.0	650.0	42.0	23.0	96.0	107.0	155.0	624.0	1,730.0
2005	33.0	676.0	43.5	22.5	95.0	108.5	110.5	646.0	1,735.0
2006	32.0	680.0	44.0	20.0	80.0	90.0	100.0	634.0	1,680.0
2007	28.5	612.0	45.0	20.5	72.0	105.0	95.0	562.0	1,540.0
2008	29.0	601.0	46.0	21.0	78.0	74.5	90.5	575.0	1,515.0
2009	27.0	550.0	45.5	21.5	73.0	87.0	99.0	527.0	1,430.0
2010
	On dairy operations								
	Bulls, 1 year and over	Beef cows	Dairy cows	Heifers			Steers, 1 year and over	Calves, under 1 year	Total
				Heifers, dairy replacement	Heifers, beef replacement	Heifers, slaughter			
	thousands of head								
At January 1									
2004	0.5	0.0	42.0	20.0	0.0	0.2	1.6	24.3	88.6
2005	0.4	0.0	44.0	18.0	0.0	0.2	1.8	22.3	86.7
2006	0.4	0.0	45.0	19.0	0.0	0.2	1.8	18.2	84.6
2007	0.4	0.0	44.5	18.5	0.0	0.2	1.5	19.0	84.1
2008	0.7	0.0	44.0	19.5	0.0	0.3	1.0	18.1	83.6
2009	0.7	0.0	45.0	23.0	0.0	0.4	0.8	16.0	85.9
2010	0.7	0.0	46.0	22.5	0.0	0.1	0.8	17.1	87.2
At July 1									
2004	0.6	0.0	42.0	23.0	0.0	0.5	2.8	24.1	93.0
2005	0.6	0.0	43.5	22.5	0.0	0.5	2.1	21.1	90.3
2006	0.5	0.0	44.0	20.0	0.0	0.6	1.7	17.1	83.9
2007	0.7	0.0	45.0	20.5	0.0	0.1	1.7	18.8	86.8
2008	0.7	0.0	46.0	21.0	0.0	0.8	1.7	16.6	86.8
2009	0.7	0.0	45.5	21.5	0.0	0.4	1.1	16.7	85.9
2010
	On beef operations ¹								
	Bulls, 1 year and over	Beef cows	Dairy cows	Heifers			Steers, 1 year and over	Calves, under 1 year	Total
				Heifers, dairy replacement	Heifers, beef replacement	Heifers, slaughter			
	thousands of head								
At January 1									
2004	29.5	638.0	0.0	0.0	80.0	53.8	75.4	484.6	1,361.3
2005	31.1	650.0	0.0	0.0	80.0	54.8	68.3	519.2	1,403.4
2006	30.1	673.0	0.0	0.0	77.0	59.7	58.2	507.3	1,405.3
2007	27.6	623.0	0.0	0.0	62.0	46.8	43.5	487.9	1,290.8
2008	26.3	614.5	0.0	0.0	62.0	51.7	48.0	468.8	1,271.3
2009	25.3	575.0	0.0	0.0	69.0	37.6	44.2	443.1	1,194.2
2010	24.3	558.0	0.0	0.0	60.5	40.9	55.2	403.8	1,142.7
At July 1									
2004	32.4	650.0	0.0	0.0	96.0	106.5	152.3	599.9	1,637.1
2005	32.4	676.0	0.0	0.0	95.0	107.9	108.5	624.9	1,644.7
2006	31.5	680.0	0.0	0.0	80.0	89.3	98.3	616.9	1,596.0
2007	27.8	612.0	0.0	0.0	72.0	105.0	93.3	543.3	1,453.4
2008	28.3	601.0	0.0	0.0	78.0	73.7	88.8	558.5	1,428.3
2009	26.3	550.0	0.0	0.0	73.0	86.6	97.9	510.4	1,344.2
2010

See notes at the end of the table.

Table 7-6 – continued

Cattle by farm type — Manitoba

	On cow calf operations								Total
	Bulls, 1 year and over	Beef cows	Dairy cows	Heifers			Steers, 1 year and over	Calves, under 1 year	
				Heifers, dairy replacement	Heifers, beef replacement	Heifers, slaughter			
thousands of head									
At January 1									
2004	27.8	601.7	0.0	0.0	74.8	10.7	13.8	392.7	1,121.5
2005	28.9	604.5	0.0	0.0	72.1	11.2	16.4	401.5	1,134.6
2006	27.7	619.1	0.0	0.0	70.7	10.0	12.3	413.0	1,152.8
2007	25.9	583.8	0.0	0.0	57.9	8.7	11.0	401.8	1,089.1
2008	24.0	561.1	0.0	0.0	56.1	6.6	12.4	375.2	1,035.4
2009	24.1	548.6	0.0	0.0	62.2	7.1	11.4	373.9	1,027.3
2010	22.4	513.3	0.0	0.0	54.3	8.8	10.6	350.8	960.2
At July 1									
2004	25.1	500.5	0.0	0.0	73.6	13.0	21.3	453.7	1,087.2
2005	25.6	537.4	0.0	0.0	76.3	14.5	19.1	489.8	1,162.7
2006	27.0	582.8	0.0	0.0	67.8	10.0	15.1	519.9	1,222.6
2007	23.5	517.7	0.0	0.0	59.5	7.9	13.0	449.7	1,071.3
2008	23.8	509.6	0.0	0.0	61.0	9.9	14.2	463.7	1,082.2
2009	22.0	461.4	0.0	0.0	61.4	11.2	12.7	419.5	988.2
2010
	On feeder and stocker operations ²								Total
Bulls, 1 year and over	Beef cows	Dairy cows	Heifers			Steers, 1 year and over	Calves, under 1 year		
			Heifers, dairy replacement	Heifers, beef replacement	Heifers, slaughter				
thousands of head									
At January 1									
2004	1.7	36.3	0.0	0.0	5.2	26.1	16.6	58.4	144.3
2005	2.2	45.5	0.0	0.0	7.9	23.6	17.9	73.7	170.8
2006	2.4	53.9	0.0	0.0	6.3	29.7	21.9	77.3	191.5
2007	1.7	39.2	0.0	0.0	4.1	25.1	16.5	80.1	166.7
2008	2.3	53.4	0.0	0.0	5.9	34.6	21.1	88.6	205.9
2009	1.2	26.4	0.0	0.0	6.8	22.0	14.8	54.7	125.9
2010	1.9	44.7	0.0	0.0	6.2	20.1	15.6	45.0	133.5
At July 1									
2004	7.3	149.5	0.0	0.0	22.4	62.5	69.0	142.7	453.4
2005	6.8	138.6	0.0	0.0	18.7	62.9	47.4	132.6	407.0
2006	4.5	97.2	0.0	0.0	12.2	47.3	39.2	94.0	294.4
2007	4.3	94.3	0.0	0.0	12.5	57.1	41.3	92.6	302.1
2008	4.5	91.4	0.0	0.0	17.0	47.3	39.1	90.8	290.1
2009	4.3	88.6	0.0	0.0	11.6	47.4	40.2	79.4	271.5
2010
	On feeding operations ³								Total
Bulls, 1 year and over	Beef cows	Dairy cows	Heifers			Steers, 1 year and over	Calves, under 1 year		
			Heifers, dairy replacement	Heifers, beef replacement	Heifers, slaughter				
thousands of head									
At January 1									
2004	0.0	0.0	0.0	0.0	0.0	17.0	45.0	33.5	95.5
2005	0.0	0.0	0.0	0.0	0.0	20.0	34.0	44.0	98.0
2006	0.0	0.0	0.0	0.0	0.0	20.0	24.0	17.0	61.0
2007	0.0	0.0	0.0	0.0	0.0	13.0	16.0	6.0	35.0
2008	0.0	0.0	0.0	0.0	0.0	10.5	14.5	5.0	30.0
2009	0.0	0.0	0.0	0.0	0.0	8.5	18.0	14.5	41.0
2010	0.0	0.0	0.0	0.0	0.0	12.0	29.0	8.0	49.0
At July 1									
2004	0.0	0.0	0.0	0.0	0.0	31.0	62.0	3.5	96.5
2005	0.0	0.0	0.0	0.0	0.0	30.5	42.0	2.5	75.0
2006	0.0	0.0	0.0	0.0	0.0	32.0	44.0	3.0	79.0
2007	0.0	0.0	0.0	0.0	0.0	40.0	39.0	1.0	80.0
2008	0.0	0.0	0.0	0.0	0.0	16.5	35.5	4.0	56.0
2009	0.0	0.0	0.0	0.0	0.0	28.0	45.0	11.5	84.5
2010

1. Excluding small numbers of heifers for slaughter and steers on dairy operations.
2. Farms where cattle are fed on a low energy ration such as hay or pasture.
3. Farms where cattle are fed a high energy ration such as grain as they are fattened for market.

Table 7-7
Cattle by farm type — Saskatchewan

	On all cattle operations								Total
	Bulls, 1 year and over	Beef cows	Dairy cows	Heifers			Steers, 1 year and over	Calves, under 1 year	
				Heifers, dairy replacement	Heifers, beef replacement	Heifers, slaughter			
	thousands of head								
At January 1									
2004	68.0	1,426.0	31.5	14.5	185.0	51.0	75.0	1,004.0	2,855.0
2005	70.0	1,535.0	31.0	14.0	176.0	49.0	71.0	1,094.0	3,040.0
2006	69.0	1,560.0	29.0	12.0	183.0	47.0	73.0	977.0	2,950.0
2007	64.0	1,484.5	28.5	12.0	170.0	52.0	79.0	1,040.0	2,930.0
2008	65.5	1,480.0	29.0	12.5	176.0	48.0	83.0	976.0	2,870.0
2009	67.0	1,390.0	29.0	13.0	155.0	32.0	86.0	878.0	2,650.0
2010	64.0	1,380.0	30.0	15.0	155.0	50.0	91.0	1,015.0	2,800.0
At July 1									
2004	74.0	1,500.0	31.0	14.0	222.0	130.0	197.0	1,372.0	3,540.0
2005	75.0	1,545.0	29.5	13.5	245.0	122.0	165.0	1,430.0	3,625.0
2006	72.0	1,508.0	28.5	12.5	206.0	90.0	145.0	1,388.0	3,450.0
2007	70.0	1,480.0	30.0	14.0	190.0	105.0	175.0	1,366.0	3,430.0
2008	72.0	1,420.0	30.0	15.0	185.0	130.0	187.0	1,346.0	3,385.0
2009	73.0	1,410.0	29.5	13.5	187.0	120.0	220.0	1,257.0	3,310.0
2010
	On dairy operations								
	Bulls, 1 year and over	Beef cows	Dairy cows	Heifers			Steers, 1 year and over	Calves, under 1 year	Total
				Heifers, dairy replacement	Heifers, beef replacement	Heifers, slaughter			
	thousands of head								
At January 1									
2004	0.3	0.0	31.5	14.5	0.0	0.1	2.0	14.7	63.1
2005	0.4	0.0	31.0	14.0	0.0	0.1	1.3	14.5	61.3
2006	0.4	0.0	29.0	12.0	0.0	0.1	0.6	14.7	56.8
2007	0.4	0.0	28.5	12.0	0.0	0.3	0.9	12.0	54.1
2008	0.3	0.0	29.0	12.5	0.0	0.1	0.6	8.2	50.7
2009	0.4	0.0	29.0	13.0	0.0	0.2	0.9	12.0	55.5
2010	0.4	0.0	30.0	15.0	0.0	0.0	0.4	15.9	61.7
At July 1									
2004	0.3	0.0	31.0	14.0	0.0	0.2	1.5	12.0	59.0
2005	0.4	0.0	29.5	13.5	0.0	0.2	1.3	11.8	56.7
2006	0.4	0.0	28.5	12.5	0.0	0.2	1.1	10.3	53.0
2007	0.4	0.0	30.0	14.0	0.0	0.1	0.9	10.7	56.1
2008	0.4	0.0	30.0	15.0	0.0	0.3	2.6	10.0	58.3
2009	0.4	0.0	29.5	13.5	0.0	0.2	1.2	8.7	53.5
2010
	On beef operations ¹								
	Bulls, 1 year and over	Beef cows	Dairy cows	Heifers			Steers, 1 year and over	Calves, under 1 year	Total
				Heifers, dairy replacement	Heifers, beef replacement	Heifers, slaughter			
	thousands of head								
At January 1									
2004	67.7	1,426.0	0.0	0.0	185.0	50.9	73.0	989.3	2,791.9
2005	69.6	1,535.0	0.0	0.0	176.0	48.9	69.7	1,079.5	2,978.7
2006	68.6	1,560.0	0.0	0.0	183.0	46.9	72.4	962.4	2,893.3
2007	63.6	1,484.5	0.0	0.0	170.0	51.7	78.1	1,027.9	2,875.8
2008	65.2	1,480.0	0.0	0.0	176.0	47.9	82.4	967.7	2,819.2
2009	66.6	1,390.0	0.0	0.0	155.0	31.8	85.1	866.0	2,594.5
2010	63.6	1,380.0	0.0	0.0	155.0	50.0	90.6	999.1	2,738.3
At July 1									
2004	73.7	1,500.0	0.0	0.0	222.0	129.8	195.5	1,359.9	3,480.9
2005	74.6	1,545.0	0.0	0.0	245.0	121.8	163.8	1,418.2	3,568.4
2006	71.6	1,508.0	0.0	0.0	206.0	89.8	143.9	1,377.7	3,397.0
2007	69.6	1,480.0	0.0	0.0	190.0	105.0	174.1	1,355.5	3,374.2
2008	71.6	1,420.0	0.0	0.0	185.0	129.8	184.4	1,336.0	3,326.8
2009	72.6	1,410.0	0.0	0.0	187.0	119.8	218.8	1,248.3	3,256.5
2010

See notes at the end of the table.

Table 7-7 – continued

Cattle by farm type — Saskatchewan

	On cow calf operations								Total
	Bulls, 1 year and over	Beef cows	Dairy cows	Heifers			Steers, 1 year and over	Calves, under 1 year	
				Heifers, dairy replacement	Heifers, beef replacement	Heifers, slaughter			
thousands of head									
At January 1									
2004	65.0	1,370.3	0.0	0.0	169.8	12.4	13.6	851.4	2,482.5
2005	66.5	1,469.0	0.0	0.0	164.9	18.6	20.9	956.1	2,696.0
2006	65.9	1,500.7	0.0	0.0	168.7	13.2	15.9	828.5	2,592.9
2007	61.4	1,434.0	0.0	0.0	161.3	12.6	13.1	904.5	2,586.9
2008	62.3	1,413.4	0.0	0.0	166.4	13.9	21.9	812.3	2,490.2
2009	64.4	1,344.2	0.0	0.0	146.9	12.3	17.1	741.5	2,326.4
2010	60.8	1,319.2	0.0	0.0	146.6	10.6	12.5	876.8	2,426.5
At July 1									
2004	64.0	1,309.5	0.0	0.0	184.8	24.4	28.9	1,168.5	2,780.1
2005	65.7	1,372.0	0.0	0.0	214.1	25.2	33.0	1,233.8	2,943.8
2006	63.8	1,346.7	0.0	0.0	180.5	13.7	23.2	1,198.1	2,826.0
2007	61.2	1,303.9	0.0	0.0	161.9	18.8	25.9	1,157.2	2,728.9
2008	62.5	1,236.8	0.0	0.0	156.0	23.3	26.2	1,136.1	2,640.9
2009	64.1	1,243.6	0.0	0.0	156.9	17.1	21.4	1,070.8	2,573.9
2010
	On feeder and stocker operations ²								
	Bulls, 1 year and over	Beef cows	Dairy cows	Heifers			Steers, 1 year and over	Calves, under 1 year	Total
				Heifers, dairy replacement	Heifers, beef replacement	Heifers, slaughter			
thousands of head									
At January 1									
2004	2.7	55.7	0.0	0.0	15.2	27.5	34.4	104.9	240.4
2005	3.1	66.0	0.0	0.0	11.1	22.3	23.8	84.4	210.7
2006	2.7	59.3	0.0	0.0	14.3	21.7	26.5	77.4	201.9
2007	2.2	50.5	0.0	0.0	8.7	26.1	30.5	77.9	195.9
2008	2.9	66.6	0.0	0.0	9.6	23.0	35.5	101.4	239.0
2009	2.2	45.8	0.0	0.0	8.1	15.0	26.5	65.5	163.1
2010	2.8	60.8	0.0	0.0	8.4	22.4	31.6	80.8	206.8
At July 1									
2004	9.7	190.5	0.0	0.0	37.2	75.4	92.6	181.4	586.8
2005	8.9	173.0	0.0	0.0	30.9	66.6	80.8	156.4	516.6
2006	7.8	161.3	0.0	0.0	25.5	67.1	72.7	146.6	481.0
2007	8.4	176.1	0.0	0.0	28.1	68.2	81.2	165.3	527.3
2008	9.1	183.2	0.0	0.0	29.0	80.5	110.2	178.9	590.9
2009	8.5	166.4	0.0	0.0	30.1	65.2	100.4	150.0	520.6
2010
	On feeding operations ³								
	Bulls, 1 year and over	Beef cows	Dairy cows	Heifers			Steers, 1 year and over	Calves, under 1 year	Total
				Heifers, dairy replacement	Heifers, beef replacement	Heifers, slaughter			
thousands of head									
At January 1									
2004	0.0	0.0	0.0	0.0	0.0	11.0	25.0	33.0	69.0
2005	0.0	0.0	0.0	0.0	0.0	8.0	25.0	39.0	72.0
2006	0.0	0.0	0.0	0.0	0.0	12.0	30.0	56.5	98.5
2007	0.0	0.0	0.0	0.0	0.0	13.0	34.5	45.5	93.0
2008	0.0	0.0	0.0	0.0	0.0	11.0	25.0	54.0	90.0
2009	0.0	0.0	0.0	0.0	0.0	4.5	41.5	59.0	105.0
2010	0.0	0.0	0.0	0.0	0.0	17.0	46.5	41.5	105.0
At July 1									
2004	0.0	0.0	0.0	0.0	0.0	30.0	74.0	10.0	114.0
2005	0.0	0.0	0.0	0.0	0.0	30.0	50.0	28.0	108.0
2006	0.0	0.0	0.0	0.0	0.0	9.0	48.0	33.0	90.0
2007	0.0	0.0	0.0	0.0	0.0	18.0	67.0	33.0	118.0
2008	0.0	0.0	0.0	0.0	0.0	26.0	48.0	21.0	95.0
2009	0.0	0.0	0.0	0.0	0.0	37.5	97.0	27.5	162.0
2010

1. Excluding small numbers of heifers for slaughter and steers on dairy operations.
2. Farms where cattle are fed on a low energy ration such as hay or pasture.
3. Farms where cattle are fed a high energy ration such as grain as they are fattened for market.

Table 7-8
Cattle by farm type — Alberta

	On all cattle operations								Total
	Bulls, 1 year and over	Beef cows	Dairy cows	Heifers			Steers, 1 year and over	Calves, under 1 year	
				Heifers, dairy replacement	Heifers, beef replacement	Heifers, slaughter			
	thousands of head								
At January 1									
2004	110.0	1,960.0	86.5	35.0	270.5	558.0	635.0	2,020.0	5,675.0
2005	110.0	2,090.0	83.0	36.0	255.0	630.0	595.0	2,131.0	5,930.0
2006	105.0	2,052.0	85.5	36.5	245.0	647.0	625.0	2,104.0	5,900.0
2007	101.5	2,000.0	79.5	35.0	253.0	657.0	637.0	1,917.0	5,680.0
2008	101.5	1,990.0	83.5	36.0	245.0	690.0	575.0	1,839.0	5,560.0
2009	98.0	1,850.0	87.0	37.0	210.0	575.0	580.0	1,943.0	5,380.0
2010	91.0	1,730.0	89.0	37.0	200.0	624.0	620.0	1,759.0	5,150.0
At July 1									
2004	113.0	2,150.0	82.0	39.0	320.0	765.0	780.0	2,151.0	6,400.0
2005	119.0	2,200.0	85.0	38.0	352.0	825.0	830.0	2,251.0	6,700.0
2006	105.0	2,025.0	82.0	38.0	278.0	812.0	888.0	2,072.0	6,300.0
2007	108.0	2,076.0	83.0	38.0	284.0	835.0	1,000.0	1,986.0	6,410.0
2008	105.0	1,955.0	86.0	40.0	267.0	750.0	805.0	2,002.0	6,010.0
2009	96.0	1,790.0	88.5	40.5	250.0	785.0	845.0	1,935.0	5,830.0
2010
	On dairy operations								
	Bulls, 1 year and over	Beef cows	Dairy cows	Heifers			Steers, 1 year and over	Calves, under 1 year	Total
				Heifers, dairy replacement	Heifers, beef replacement	Heifers, slaughter			
	thousands of head								
At January 1									
2004	2.2	0.0	86.5	35.0	0.0	2.8	6.5	50.3	183.3
2005	1.4	0.0	83.0	36.0	0.0	3.0	3.8	57.3	184.5
2006	0.9	0.0	85.5	36.5	0.0	2.9	3.5	46.1	175.4
2007	0.7	0.0	79.5	35.0	0.0	4.6	2.3	43.3	165.4
2008	1.3	0.0	83.5	36.0	0.0	4.5	6.4	41.6	173.3
2009	1.5	0.0	87.0	37.0	0.0	4.8	1.4	37.0	168.7
2010	1.1	0.0	89.0	37.0	0.0	1.6	2.2	40.2	171.1
At July 1									
2004	1.7	0.0	82.0	39.0	0.0	7.3	5.1	50.1	185.2
2005	2.1	0.0	85.0	38.0	0.0	7.4	5.1	40.8	178.4
2006	1.3	0.0	82.0	38.0	0.0	7.1	1.9	31.7	162.0
2007	1.0	0.0	83.0	38.0	0.0	5.7	2.2	27.8	157.7
2008	1.5	0.0	86.0	40.0	0.0	3.5	2.6	33.8	167.4
2009	1.4	0.0	88.5	40.5	0.0	2.0	3.5	36.1	172.0
2010
	On beef operations ¹								
	Bulls, 1 year and over	Beef cows	Dairy cows	Heifers			Steers, 1 year and over	Calves, under 1 year	Total
				Heifers, dairy replacement	Heifers, beef replacement	Heifers, slaughter			
	thousands of head								
At January 1									
2004	107.8	1,960.0	0.0	0.0	270.5	555.3	628.5	1,969.8	5,491.9
2005	108.6	2,090.0	0.0	0.0	255.0	627.1	591.1	2,073.7	5,745.5
2006	104.1	2,052.0	0.0	0.0	245.0	644.1	621.5	2,058.0	5,724.7
2007	100.8	2,000.0	0.0	0.0	253.0	652.4	634.7	1,873.8	5,514.7
2008	100.2	1,990.0	0.0	0.0	245.0	685.5	568.6	1,797.4	5,386.7
2009	96.5	1,850.0	0.0	0.0	210.0	570.2	578.6	1,906.0	5,211.3
2010	89.9	1,730.0	0.0	0.0	200.0	622.4	617.8	1,718.9	4,979.0
At July 1									
2004	111.3	2,150.0	0.0	0.0	320.0	757.7	774.9	2,101.0	6,214.9
2005	116.9	2,200.0	0.0	0.0	352.0	817.7	824.9	2,210.3	6,521.8
2006	103.7	2,025.0	0.0	0.0	278.0	804.9	886.1	2,040.3	6,138.0
2007	107.0	2,076.0	0.0	0.0	284.0	829.4	997.8	1,958.2	6,252.4
2008	103.5	1,955.0	0.0	0.0	267.0	746.6	802.4	1,968.1	5,842.6
2009	94.6	1,790.0	0.0	0.0	250.0	783.0	841.5	1,898.9	5,658.0
2010

See notes at the end of the table.

Table 7-8 – continued
Cattle by farm type — Alberta

	On cow calf operations								Total
	Bulls, 1 year and over	Beef cows	Dairy cows	Heifers			Steers, 1 year and over	Calves, under 1 year	
				Heifers, dairy replacement	Heifers, beef replacement	Heifers, slaughter			
thousands of head									
At January 1									
2004	101.1	1,818.9	0.0	0.0	244.0	24.7	18.6	1,305.8	3,513.1
2005	101.8	1,961.7	0.0	0.0	238.2	31.3	24.2	1,493.6	3,850.8
2006	97.8	1,926.0	0.0	0.0	231.3	33.9	25.5	1,359.0	3,673.5
2007	93.2	1,848.0	0.0	0.0	232.2	23.7	16.9	1,232.0	3,446.0
2008	92.6	1,836.8	0.0	0.0	221.8	36.2	20.7	1,205.4	3,413.5
2009	90.1	1,726.0	0.0	0.0	189.6	32.6	23.5	1,262.7	3,324.5
2010	84.5	1,629.6	0.0	0.0	186.9	33.1	25.0	1,146.9	3,106.0
At July 1									
2004	92.3	1,788.8	0.0	0.0	261.3	53.1	51.1	1,691.2	3,937.8
2005	97.7	1,834.8	0.0	0.0	287.5	55.4	60.5	1,723.2	4,059.1
2006	87.4	1,707.0	0.0	0.0	229.1	40.4	35.2	1,583.6	3,682.7
2007	88.5	1,712.7	0.0	0.0	224.4	42.1	40.5	1,497.5	3,605.7
2008	83.2	1,575.7	0.0	0.0	203.6	33.9	32.9	1,462.7	3,392.0
2009	77.2	1,471.4	0.0	0.0	183.1	41.6	36.6	1,374.1	3,184.0
2010
	On feeder and stocker operations ²								
	Bulls, 1 year and over	Beef cows	Dairy cows	Heifers			Steers, 1 year and over	Calves, under 1 year	Total
				Heifers, dairy replacement	Heifers, beef replacement	Heifers, slaughter			
thousands of head									
At January 1									
2004	6.7	141.1	0.0	0.0	26.5	255.6	164.9	494.0	1,088.8
2005	6.8	128.3	0.0	0.0	16.8	263.8	143.9	445.1	1,004.7
2006	6.3	126.0	0.0	0.0	13.7	253.2	163.0	514.5	1,076.7
2007	7.6	152.0	0.0	0.0	20.8	279.7	205.8	422.8	1,088.7
2008	7.6	153.2	0.0	0.0	23.2	307.3	151.9	445.0	1,088.2
2009	6.4	124.0	0.0	0.0	20.4	213.1	119.1	383.8	866.8
2010	5.4	100.4	0.0	0.0	13.1	289.3	192.8	327.0	928.0
At July 1									
2004	19.0	361.2	0.0	0.0	58.7	324.6	308.8	384.8	1,457.1
2005	19.2	365.2	0.0	0.0	64.5	347.3	329.4	452.1	1,577.7
2006	16.3	318.0	0.0	0.0	48.9	344.5	340.9	421.7	1,490.3
2007	18.5	363.3	0.0	0.0	59.6	360.3	392.3	417.7	1,611.7
2008	20.3	379.3	0.0	0.0	63.4	347.7	334.5	395.4	1,540.6
2009	17.4	318.6	0.0	0.0	66.9	356.4	304.9	374.8	1,439.0
2010
	On feeding operations ³								
	Bulls, 1 year and over	Beef cows	Dairy cows	Heifers			Steers, 1 year and over	Calves, under 1 year	Total
				Heifers, dairy replacement	Heifers, beef replacement	Heifers, slaughter			
thousands of head									
At January 1									
2004	0.0	0.0	0.0	0.0	0.0	275.0	445.0	170.0	890.0
2005	0.0	0.0	0.0	0.0	0.0	332.0	423.0	135.0	890.0
2006	0.0	0.0	0.0	0.0	0.0	357.0	433.0	184.5	974.5
2007	0.0	0.0	0.0	0.0	0.0	349.0	412.0	219.0	980.0
2008	0.0	0.0	0.0	0.0	0.0	342.0	396.0	147.0	885.0
2009	0.0	0.0	0.0	0.0	0.0	324.5	436.0	259.5	1,020.0
2010	0.0	0.0	0.0	0.0	0.0	300.0	400.0	245.0	945.0
At July 1									
2004	0.0	0.0	0.0	0.0	0.0	380.0	415.0	25.0	820.0
2005	0.0	0.0	0.0	0.0	0.0	415.0	435.0	35.0	885.0
2006	0.0	0.0	0.0	0.0	0.0	420.0	510.0	35.0	965.0
2007	0.0	0.0	0.0	0.0	0.0	427.0	565.0	43.0	1,035.0
2008	0.0	0.0	0.0	0.0	0.0	365.0	435.0	110.0	910.0
2009	0.0	0.0	0.0	0.0	0.0	385.0	500.0	150.0	1,035.0
2010

1. Excluding small numbers of heifers for slaughter and steers on dairy operations.
 2. Farms where cattle are fed on a low energy ration such as hay or pasture.
 3. Farms where cattle are fed a high energy ration such as grain as they are fattened for market.

Table 7-9
Cattle by farm type — British Columbia

	On all cattle operations								Total
	Bulls, 1 year and over	Beef cows	Dairy cows	Heifers			Steers, 1 year and over	Calves, under 1 year	
				Heifers, dairy replacement	Heifers, beef replacement	Heifers, slaughter			
	thousands of head								
At January 1									
2004	16.0	290.0	80.0	38.0	45.0	14.0	53.0	204.0	740.0
2005	17.0	305.0	78.0	36.0	37.0	13.0	40.0	184.0	710.0
2006	16.0	285.0	75.0	30.0	35.0	15.0	30.0	174.0	660.0
2007	14.5	260.5	70.5	32.0	30.0	12.0	30.0	165.5	615.0
2008	14.5	249.0	70.8	35.0	32.0	14.5	23.0	171.2	610.0
2009	13.0	212.0	71.1	32.0	28.0	12.0	23.0	163.9	555.0
2010	12.0	197.0	71.1	33.4	27.5	8.0	16.0	160.0	525.0
At July 1									
2004	19.0	327.0	78.0	35.0	51.0	32.0	73.0	335.0	950.0
2005	18.0	319.5	77.5	32.5	48.5	35.0	63.0	321.0	915.0
2006	17.0	280.0	73.0	35.5	43.5	26.0	55.0	290.0	820.0
2007	16.0	277.0	70.6	36.5	40.0	25.0	57.0	282.9	805.0
2008	16.5	244.0	71.0	33.0	36.5	25.0	54.0	270.0	750.0
2009	14.5	223.0	72.0	34.5	36.0	28.0	51.0	246.0	705.0
2010
	On dairy operations								
	Bulls, 1 year and over	Beef cows	Dairy cows	Heifers			Steers, 1 year and over	Calves, under 1 year	Total
				Heifers, dairy replacement	Heifers, beef replacement	Heifers, slaughter			
	thousands of head								
At January 1									
2004	0.9	0.0	80.0	38.0	0.0	0.4	1.3	34.1	154.7
2005	0.8	0.0	78.0	36.0	0.0	0.1	0.4	29.3	144.6
2006	0.6	0.0	75.0	30.0	0.0	0.3	0.6	27.0	133.5
2007	0.7	0.0	70.5	32.0	0.0	0.4	1.2	26.4	131.2
2008	0.7	0.0	70.8	35.0	0.0	0.2	1.0	26.8	134.5
2009	0.6	0.0	71.1	32.0	0.0	0.1	1.0	23.0	127.8
2010	0.7	0.0	71.1	33.4	0.0	0.2	0.6	28.5	134.5
At July 1									
2004	1.0	0.0	78.0	35.0	0.0	0.1	0.8	30.0	144.9
2005	0.7	0.0	77.5	32.5	0.0	0.5	0.7	29.1	141.0
2006	0.7	0.0	73.0	35.5	0.0	0.2	2.0	25.7	137.1
2007	0.8	0.0	70.6	36.5	0.0	0.9	4.6	25.3	138.7
2008	0.9	0.0	71.0	33.0	0.0	0.1	1.8	24.6	131.4
2009	0.7	0.0	72.0	34.5	0.0	1.0	0.3	22.3	130.8
2010
	On beef operations ¹								
	Bulls, 1 year and over	Beef cows	Dairy cows	Heifers			Steers, 1 year and over	Calves, under 1 year	Total
				Heifers, dairy replacement	Heifers, beef replacement	Heifers, slaughter			
	thousands of head								
At January 1									
2004	15.1	290.0	0.0	0.0	45.0	13.6	51.6	170.0	585.3
2005	16.2	305.0	0.0	0.0	37.0	12.9	39.6	154.7	565.4
2006	15.4	285.0	0.0	0.0	35.0	14.7	29.4	147.0	526.5
2007	13.8	260.5	0.0	0.0	30.0	11.6	28.8	139.1	483.8
2008	13.8	249.0	0.0	0.0	32.0	14.3	22.0	144.3	475.4
2009	12.4	212.0	0.0	0.0	28.0	11.9	22.0	140.9	427.2
2010	11.3	197.0	0.0	0.0	27.5	7.8	15.4	131.6	390.6
At July 1									
2004	18.0	327.0	0.0	0.0	51.0	31.9	72.3	305.0	805.2
2005	17.3	319.5	0.0	0.0	48.5	34.5	62.3	291.9	774.0
2006	16.3	280.0	0.0	0.0	43.5	25.9	53.0	264.2	682.9
2007	15.2	277.0	0.0	0.0	40.0	24.0	52.4	257.6	666.2
2008	15.6	244.0	0.0	0.0	36.5	24.8	52.2	245.4	618.5
2009	13.8	223.0	0.0	0.0	36.0	27.0	50.7	223.8	574.3
2010

See notes at the end of the table.

Table 7-9 – continued

Cattle by farm type — British Columbia

	On cow calf operations								Total
	Bulls, 1 year and over	Beef cows	Dairy cows	Heifers			Steers, 1 year and over	Calves, under 1 year	
				Heifers, dairy replacement	Heifers, beef replacement	Heifers, slaughter			
thousands of head									
At January 1									
2004	14.1	272.5	0.0	0.0	41.9	5.4	8.0	143.6	485.5
2005	15.2	286.7	0.0	0.0	34.8	6.5	9.5	134.1	486.8
2006	14.4	266.5	0.0	0.0	32.8	5.1	7.3	122.6	448.7
2007	12.7	240.2	0.0	0.0	26.2	3.8	6.3	108.0	397.2
2008	13.1	236.1	0.0	0.0	29.7	4.4	5.8	119.8	408.9
2009	11.6	198.2	0.0	0.0	26.1	3.7	7.6	106.6	353.8
2010	10.8	188.3	0.0	0.0	26.1	3.6	7.0	109.9	345.7
At July 1									
2004	14.2	264.8	0.0	0.0	40.0	8.3	13.8	238.7	579.8
2005	13.5	256.6	0.0	0.0	39.6	9.3	15.3	231.3	565.6
2006	13.4	231.0	0.0	0.0	34.3	5.7	9.3	209.6	503.3
2007	12.4	229.4	0.0	0.0	30.8	7.7	9.2	203.4	492.9
2008	13.3	206.5	0.0	0.0	30.4	6.4	10.0	201.5	468.1
2009	10.9	175.1	0.0	0.0	28.1	6.6	9.8	168.6	399.1
2010
	On feeder and stocker operations ²								
	Bulls, 1 year and over	Beef cows	Dairy cows	Heifers			Steers, 1 year and over	Calves, under 1 year	Total
				Heifers, dairy replacement	Heifers, beef replacement	Heifers, slaughter			
thousands of head									
At January 1									
2004	1.0	17.5	0.0	0.0	3.1	6.2	12.6	20.9	61.3
2005	1.0	18.3	0.0	0.0	2.2	3.9	11.1	17.1	53.6
2006	1.0	18.5	0.0	0.0	2.2	7.1	9.1	18.4	56.3
2007	1.1	20.3	0.0	0.0	3.8	4.8	12.5	28.1	70.6
2008	0.7	12.9	0.0	0.0	2.3	4.9	9.2	21.5	51.5
2009	0.8	13.8	0.0	0.0	1.9	3.7	10.4	31.8	62.4
2010	0.5	8.7	0.0	0.0	1.4	2.0	3.9	20.4	36.9
At July 1									
2004	3.8	62.2	0.0	0.0	11.0	20.1	34.5	59.3	190.9
2005	3.8	62.9	0.0	0.0	8.9	21.7	31.0	58.1	186.4
2006	2.9	49.0	0.0	0.0	9.2	15.7	24.7	50.6	152.1
2007	2.8	47.6	0.0	0.0	9.2	10.8	24.2	52.2	146.8
2008	2.3	37.5	0.0	0.0	6.1	12.4	23.7	42.4	124.4
2009	2.9	47.9	0.0	0.0	7.9	14.4	21.9	54.2	149.2
2010
	On feeding operations ³								
	Bulls, 1 year and over	Beef cows	Dairy cows	Heifers			Steers, 1 year and over	Calves, under 1 year	Total
				Heifers, dairy replacement	Heifers, beef replacement	Heifers, slaughter			
thousands of head									
At January 1									
2004	0.0	0.0	0.0	0.0	0.0	2.0	31.0	5.5	38.5
2005	0.0	0.0	0.0	0.0	0.0	2.5	19.0	3.5	25.0
2006	0.0	0.0	0.0	0.0	0.0	2.5	13.0	6.0	21.5
2007	0.0	0.0	0.0	0.0	0.0	3.0	10.0	3.0	16.0
2008	0.0	0.0	0.0	0.0	0.0	5.0	7.0	3.0	15.0
2009	0.0	0.0	0.0	0.0	0.0	4.5	4.0	2.5	11.0
2010	0.0	0.0	0.0	0.0	0.0	2.2	4.5	1.3	8.0
At July 1									
2004	0.0	0.0	0.0	0.0	0.0	3.5	24.0	7.0	34.5
2005	0.0	0.0	0.0	0.0	0.0	3.5	16.0	2.5	22.0
2006	0.0	0.0	0.0	0.0	0.0	4.5	19.0	4.0	27.5
2007	0.0	0.0	0.0	0.0	0.0	5.5	19.0	2.0	26.5
2008	0.0	0.0	0.0	0.0	0.0	6.0	18.5	1.5	26.0
2009	0.0	0.0	0.0	0.0	0.0	6.0	19.0	1.0	26.0
2010

1. Excluding small numbers of heifers for slaughter and steers on dairy operations.
2. Farms where cattle are fed on a low energy ration such as hay or pasture.
3. Farms where cattle are fed a high energy ration such as grain as they are fattened for market.

Table 7-10
Cattle by farm type — Western provinces

	On all cattle operations								Total
	Bulls, 1 year and over	Beef cows	Dairy cows	Heifers			Steers, 1 year and over	Calves, under 1 year	
				Heifers, dairy replacement	Heifers, beef replacement	Heifers, slaughter			
	thousands of head								
At January 1									
2004	224.0	4,314.0	240.0	107.5	580.5	677.0	840.0	3,737.0	10,720.0
2005	228.5	4,580.0	236.0	104.0	548.0	747.0	776.0	3,950.5	11,170.0
2006	220.5	4,570.0	234.5	97.5	540.0	769.0	788.0	3,780.5	11,000.0
2007	208.0	4,368.0	223.0	97.5	515.0	768.0	791.0	3,629.5	10,600.0
2008	208.5	4,333.5	227.3	103.0	515.0	804.5	730.0	3,473.2	10,395.0
2009	204.0	4,027.0	232.1	105.0	462.0	657.0	734.0	3,443.9	9,865.0
2010	192.0	3,865.0	236.1	107.9	443.0	723.0	783.0	3,355.0	9,705.0
At July 1									
2004	239.0	4,627.0	233.0	111.0	689.0	1,034.0	1,205.0	4,482.0	12,620.0
2005	245.0	4,740.5	235.5	106.5	740.5	1,090.5	1,168.5	4,648.0	12,975.0
2006	226.0	4,493.0	227.5	106.0	607.5	1,018.0	1,188.0	4,384.0	12,250.0
2007	222.5	4,445.0	228.6	109.0	586.0	1,070.0	1,327.0	4,196.9	12,185.0
2008	222.5	4,220.0	233.0	109.0	566.5	979.5	1,136.5	4,193.0	11,660.0
2009	210.5	3,973.0	235.5	110.0	546.0	1,020.0	1,215.0	3,965.0	11,275.0
2010
	On dairy operations								
	Bulls, 1 year and over	Beef cows	Dairy cows	Heifers			Steers, 1 year and over	Calves, under 1 year	Total
				Heifers, dairy replacement	Heifers, beef replacement	Heifers, slaughter			
	thousands of head								
At January 1									
2004	3.9	0.0	240.0	107.5	0.0	3.5	11.4	123.4	489.7
2005	3.0	0.0	236.0	104.0	0.0	3.4	7.3	123.4	477.1
2006	2.3	0.0	234.5	97.5	0.0	3.5	6.5	106.0	450.3
2007	2.2	0.0	223.0	97.5	0.0	5.5	5.9	100.7	434.8
2008	3.0	0.0	227.3	103.0	0.0	5.1	9.0	94.7	442.1
2009	3.2	0.0	232.1	105.0	0.0	5.5	4.1	88.0	437.9
2010	2.9	0.0	236.1	107.9	0.0	1.9	4.0	101.7	454.5
At July 1									
2004	3.6	0.0	233.0	111.0	0.0	8.1	10.2	116.2	482.1
2005	3.8	0.0	235.5	106.5	0.0	8.6	9.2	102.8	466.4
2006	2.9	0.0	227.5	106.0	0.0	8.1	6.7	84.8	436.0
2007	2.9	0.0	228.6	109.0	0.0	6.8	9.4	82.6	439.3
2008	3.5	0.0	233.0	109.0	0.0	4.7	8.7	85.0	443.9
2009	3.2	0.0	235.5	110.0	0.0	3.6	6.1	83.8	442.2
2010
	On beef operations ¹								
	Bulls, 1 year and over	Beef cows	Dairy cows	Heifers			Steers, 1 year and over	Calves, under 1 year	Total
				Heifers, dairy replacement	Heifers, beef replacement	Heifers, slaughter			
	thousands of head								
At January 1									
2004	220.1	4,314.0	0.0	0.0	580.5	673.6	828.5	3,613.7	10,230.4
2005	225.5	4,580.0	0.0	0.0	548.0	743.7	768.7	3,827.1	10,693.0
2006	218.2	4,570.0	0.0	0.0	540.0	765.4	781.5	3,674.7	10,549.8
2007	205.8	4,368.0	0.0	0.0	515.0	762.5	785.1	3,528.7	10,165.1
2008	205.5	4,333.5	0.0	0.0	515.0	799.4	721.0	3,378.2	9,952.6
2009	200.8	4,027.0	0.0	0.0	462.0	651.5	729.9	3,356.0	9,427.2
2010	189.1	3,865.0	0.0	0.0	443.0	721.1	779.0	3,253.4	9,250.6
At July 1									
2004	235.4	4,627.0	0.0	0.0	689.0	1,025.9	1,195.0	4,365.8	12,138.1
2005	241.2	4,740.5	0.0	0.0	740.5	1,081.9	1,159.5	4,545.3	12,508.9
2006	223.1	4,493.0	0.0	0.0	607.5	1,009.9	1,181.3	4,299.1	11,813.9
2007	219.6	4,445.0	0.0	0.0	586.0	1,063.4	1,317.6	4,114.6	11,746.2
2008	219.0	4,220.0	0.0	0.0	566.5	974.9	1,127.8	4,108.0	11,216.2
2009	207.3	3,973.0	0.0	0.0	546.0	1,016.4	1,208.9	3,881.4	10,833.0
2010

See notes at the end of the table.

Table 7-10 – continued

Cattle by farm type — Western provinces

	On cow calf operations								Total
	Bulls, 1 year and over	Beef cows	Dairy cows	Heifers			Steers, 1 year and over	Calves, under 1 year	
				Heifers, dairy replacement	Heifers, beef replacement	Heifers, slaughter			
thousands of head									
At January 1									
2004	208.0	4,063.4	0.0	0.0	530.5	53.2	54.0	2,693.5	7,602.6
2005	212.4	4,321.9	0.0	0.0	510.0	67.6	71.0	2,985.3	8,168.2
2006	205.8	4,312.3	0.0	0.0	503.5	62.2	61.0	2,723.1	7,867.9
2007	193.2	4,106.0	0.0	0.0	477.6	48.8	47.3	2,646.3	7,519.2
2008	192.0	4,047.4	0.0	0.0	474.0	61.1	60.8	2,512.7	7,348.0
2009	190.2	3,817.0	0.0	0.0	424.8	55.7	59.6	2,484.7	7,032.0
2010	178.5	3,650.4	0.0	0.0	413.9	56.1	55.1	2,484.4	6,838.4
At July 1									
2004	195.6	3,863.6	0.0	0.0	559.7	98.8	115.1	3,552.1	8,384.9
2005	202.5	4,000.8	0.0	0.0	617.5	104.4	127.9	3,678.1	8,731.2
2006	191.6	3,867.5	0.0	0.0	511.7	69.8	82.8	3,511.2	8,234.6
2007	185.6	3,763.7	0.0	0.0	476.6	76.5	88.6	3,307.8	7,898.8
2008	182.8	3,528.6	0.0	0.0	451.0	73.5	83.3	3,264.0	7,583.2
2009	174.2	3,351.5	0.0	0.0	429.5	76.5	80.5	3,033.0	7,145.2
2010
On feeder and stocker operations ²									
	Bulls, 1 year and over	Beef cows	Dairy cows	Heifers			Steers, 1 year and over	Calves, under 1 year	Total
				Heifers, dairy replacement	Heifers, beef replacement	Heifers, slaughter			
	thousands of head								
At January 1									
2004	12.1	250.6	0.0	0.0	50.0	315.4	228.5	678.2	1,534.8
2005	13.1	258.1	0.0	0.0	38.0	313.6	196.7	620.3	1,439.8
2006	12.4	257.7	0.0	0.0	36.5	311.7	220.5	687.6	1,526.4
2007	12.6	262.0	0.0	0.0	37.4	335.7	265.3	608.9	1,521.9
2008	13.5	286.1	0.0	0.0	41.0	369.8	217.7	656.5	1,584.6
2009	10.6	210.0	0.0	0.0	37.2	253.8	170.8	535.8	1,218.2
2010	10.6	214.6	0.0	0.0	29.1	333.8	243.9	473.2	1,305.2
At July 1									
2004	39.8	763.4	0.0	0.0	129.3	482.6	504.9	768.2	2,688.2
2005	38.7	739.7	0.0	0.0	123.0	498.5	488.6	799.2	2,687.7
2006	31.5	625.5	0.0	0.0	95.8	474.6	477.5	712.9	2,417.8
2007	34.0	681.3	0.0	0.0	109.4	496.4	539.0	727.8	2,587.9
2008	36.2	691.4	0.0	0.0	115.5	487.9	507.5	707.5	2,546.0
2009	33.1	621.5	0.0	0.0	116.5	483.4	467.4	658.4	2,380.3
2010
On feeding operations ³									
	Bulls, 1 year and over	Beef cows	Dairy cows	Heifers			Steers, 1 year and over	Calves, under 1 year	Total
				Heifers, dairy replacement	Heifers, beef replacement	Heifers, slaughter			
	thousands of head								
At January 1									
2004	0.0	0.0	0.0	0.0	0.0	305.0	546.0	242.0	1,093.0
2005	0.0	0.0	0.0	0.0	0.0	362.5	501.0	221.5	1,085.0
2006	0.0	0.0	0.0	0.0	0.0	391.5	500.0	264.0	1,155.5
2007	0.0	0.0	0.0	0.0	0.0	378.0	472.5	273.5	1,124.0
2008	0.0	0.0	0.0	0.0	0.0	368.5	442.5	209.0	1,020.0
2009	0.0	0.0	0.0	0.0	0.0	342.0	499.5	335.5	1,177.0
2010	0.0	0.0	0.0	0.0	0.0	331.2	480.0	295.8	1,107.0
At July 1									
2004	0.0	0.0	0.0	0.0	0.0	444.5	575.0	45.5	1,065.0
2005	0.0	0.0	0.0	0.0	0.0	479.0	543.0	68.0	1,090.0
2006	0.0	0.0	0.0	0.0	0.0	465.5	621.0	75.0	1,161.5
2007	0.0	0.0	0.0	0.0	0.0	490.5	690.0	79.0	1,259.5
2008	0.0	0.0	0.0	0.0	0.0	413.5	537.0	136.5	1,087.0
2009	0.0	0.0	0.0	0.0	0.0	456.5	661.0	190.0	1,307.5
2010

1. Excluding small numbers of heifers for slaughter and steers on dairy operations.
2. Farms where cattle are fed on a low energy ration such as hay or pasture.
3. Farms where cattle are fed a high energy ration such as grain as they are fattened for market.

Table 8-1
Feeder cattle by weight category, by farm type at January 1, 2010 — Canada

	Total	Heavy	Medium	Light
	thousands of head			
On all cattle operations				
Feeder heifers	899.8	447.3	264.7	187.8
Steers	1,140.7	449.3	339.3	352.1
Total	2,040.5	896.6	604.0	539.9
On dairy operations				
Feeder heifers	8.2	4.1	1.9	2.2
Steers	35.7	10.7	8.6	16.4
Total	43.9	14.8	10.5	18.6
On beef operations ¹				
Feeder heifers	891.6	443.2	262.8	185.6
Steers	1,105.0	438.6	330.7	335.7
Total	1,996.6	881.8	593.5	521.3
On cow calf operations				
Feeder heifers	88.5	26.9	31.4	30.2
Steers	91.4	20.7	23.8	46.9
Total	179.9	47.6	55.2	77.1
On feeder and stocker operations ²				
Feeder heifers	383.7	207.7	91.6	84.4
Steers	310.9	115.4	80.8	114.7
Total	694.6	323.1	172.4	199.1
On feeding operations ³				
Feeder heifers	419.4	208.6	139.8	71.0
Steers	702.7	302.5	226.1	174.1
Total	1,122.1	511.1	365.9	245.1

1. Excluding small amounts of heifers for slaughter and steers on dairy operations.
2. Farms where cattle are fed on a low energy ration such as hay or pasture.
3. Farms where cattle are fed a high energy ration such as grain as they are fattened for market.

Table 8-2
Feeder cattle by weight category, by farm type at January 1, 2010 — East

	Total	Heavy	Medium	Light
	thousands of head			
On all cattle operations				
Feeder heifers	176.8	74.4	64.6	37.8
Steers	357.7	135.9	115.2	106.6
Total	534.5	210.3	179.8	144.4
On dairy operations				
Feeder heifers	6.3	2.6	1.7	2.0
Steers	31.7	9.8	7.7	14.2
Total	38.0	12.4	9.4	16.2
On beef operations ¹				
Feeder heifers	170.5	71.8	62.9	35.8
Steers	326.0	126.1	107.5	92.4
Total	496.5	197.9	170.4	128.2
On cow calf operations				
Feeder heifers	32.4	9.5	13.3	9.6
Steers	36.3	6.8	10.2	19.3
Total	68.7	16.3	23.5	28.9
On feeder and stocker operations ²				
Feeder heifers	49.9	23.4	11.1	15.4
Steers	67.0	29.3	17.7	20.0
Total	116.9	52.7	28.8	35.4
On feeding operations ³				
Feeder heifers	88.2	38.9	38.5	10.8
Steers	222.7	90.0	79.6	53.1
Total	310.9	128.9	118.1	63.9

1. Excluding small amounts of heifers for slaughter and steers on dairy operations.

2. Farms where cattle are fed on a low energy ration such as hay or pasture.

3. Farms where cattle are fed a high energy ration such as grain as they are fattened for market.

Table 8-3
Feeder cattle by weight category, by farm type at January 1, 2010 — Atlantic

	Total	Heavy	Medium	Light
	thousands of head			
On all cattle operations				
Feeder heifers	17.8	5.3	5.6	6.9
Steers	23.7	6.1	7.3	10.3
Total	41.5	11.4	12.9	17.2
On dairy operations				
Feeder heifers	1.0	0.3	0.2	0.5
Steers	1.3	0.3	0.3	0.7
Total	2.3	0.6	0.5	1.2
On beef operations ¹				
Feeder heifers	16.8	5.0	5.4	6.4
Steers	22.4	5.8	7.0	9.6
Total	39.2	10.8	12.4	16.0
On cow calf operations				
Feeder heifers	1.3	0.2	0.5	0.6
Steers	1.6	0.3	0.7	0.6
Total	2.9	0.5	1.2	1.2
On feeder and stocker operations ²				
Feeder heifers	8.5	1.9	3.3	3.3
Steers	11.8	2.8	3.2	5.8
Total	20.3	4.7	6.5	9.1
On feeding operations ³				
Feeder heifers	7.0	2.9	1.6	2.5
Steers	9.0	2.7	3.1	3.2
Total	16.0	5.6	4.7	5.7

1. Excluding small amounts of heifers for slaughter and steers on dairy operations.

2. Farms where cattle are fed on a low energy ration such as hay or pasture.

3. Farms where cattle are fed a high energy ration such as grain as they are fattened for market.

Table 8-4
Feeder cattle by weight category, by farm type at January 1, 2010 — Quebec

	Total	Heavy	Medium	Light
	thousands of head			
On all cattle operations				
Feeder heifers	30.0	12.3	9.3	8.4
Steers	94.0	33.8	26.3	33.9
Total	124.0	46.1	35.6	42.3
On dairy operations				
Feeder heifers	0.7	0.0	0.1	0.6
Steers	7.6	0.8	1.0	5.8
Total	8.3	0.8	1.1	6.4
On beef operations ¹				
Feeder heifers	29.3	12.3	9.2	7.8
Steers	86.4	33.0	25.3	28.1
Total	115.7	45.3	34.5	35.9
On cow calf operations				
Feeder heifers	5.4	2.2	1.5	1.7
Steers	4.7	0.8	1.2	2.7
Total	10.1	3.0	2.7	4.4
On feeder and stocker operations ²				
Feeder heifers	14.7	6.1	3.8	4.8
Steers	25.0	9.9	7.6	7.5
Total	39.7	16.0	11.4	12.3
On feeding operations ³				
Feeder heifers	9.2	4.0	3.9	1.3
Steers	56.7	22.3	16.5	17.9
Total	65.9	26.3	20.4	19.2

1. Excluding small amounts of heifers for slaughter and steers on dairy operations.

2. Farms where cattle are fed on a low energy ration such as hay or pasture.

3. Farms where cattle are fed a high energy ration such as grain as they are fattened for market.

Table 8-5
Feeder cattle by weight category, by farm type at January 1, 2010 — Ontario

	Total	Heavy	Medium	Light
	thousands of head			
On all cattle operations				
Feeder heifers	129.0	56.8	49.7	22.5
Steers	240.0	96.0	81.6	62.4
Total	369.0	152.8	131.3	84.9
On dairy operations				
Feeder heifers	4.6	2.3	1.4	0.9
Steers	22.8	8.7	6.4	7.7
Total	27.4	11.0	7.8	8.6
On beef operations ¹				
Feeder heifers	124.4	54.5	48.3	21.6
Steers	217.2	87.3	75.2	54.7
Total	341.6	141.8	123.5	76.3
On cow calf operations				
Feeder heifers	25.7	7.1	11.3	7.3
Steers	30.0	5.7	8.3	16.0
Total	55.7	12.8	19.6	23.3
On feeder and stocker operations ²				
Feeder heifers	26.7	15.4	4.0	7.3
Steers	30.2	16.6	6.9	6.7
Total	56.9	32.0	10.9	14.0
On feeding operations ³				
Feeder heifers	72.0	32.0	33.0	7.0
Steers	157.0	65.0	60.0	32.0
Total	229.0	97.0	93.0	39.0

1. Excluding small amounts of heifers for slaughter and steers on dairy operations.

2. Farms where cattle are fed on a low energy ration such as hay or pasture.

3. Farms where cattle are fed a high energy ration such as grain as they are fattened for market.

Table 8-6
Feeder cattle by weight category, by farm type at January 1, 2010 — Manitoba

	Total	Heavy	Medium	Light
	thousands of head			
On all cattle operations				
Feeder heifers	41.0	13.1	8.0	19.9
Steers	56.0	12.9	9.0	34.1
Total	97.0	26.0	17.0	54.0
On dairy operations				
Feeder heifers	0.1	0.0	0.0	0.1
Steers	0.8	0.1	0.2	0.5
Total	0.9	0.1	0.2	0.6
On beef operations ¹				
Feeder heifers	40.9	13.1	8.0	19.8
Steers	55.2	12.8	8.8	33.6
Total	96.1	25.9	16.8	53.4
On cow calf operations				
Feeder heifers	8.8	2.9	2.2	3.7
Steers	10.6	1.7	2.8	6.1
Total	19.4	4.6	5.0	9.8
On feeder and stocker operations ²				
Feeder heifers	20.1	8.7	3.3	8.1
Steers	15.6	7.1	4.0	4.5
Total	35.7	15.8	7.3	12.6
On feeding operations ³				
Feeder heifers	12.0	1.5	2.5	8.0
Steers	29.0	4.0	2.0	23.0
Total	41.0	5.5	4.5	31.0

1. Excluding small amounts of heifers for slaughter and steers on dairy operations.

2. Farms where cattle are fed on a low energy ration such as hay or pasture.

3. Farms where cattle are fed a high energy ration such as grain as they are fattened for market.

Table 8-7
Feeder cattle by weight category, by farm type at January 1, 2010 — Saskatchewan

	Total	Heavy	Medium	Light
	thousands of head			
On all cattle operations				
Feeder heifers	50.0	9.5	15.8	24.7
Steers	91.0	10.5	25.5	55.0
Total	141.0	20.0	41.3	79.7
On dairy operations				
Feeder heifers	0.0	0.0	0.0	0.0
Steers	0.4	0.1	0.1	0.2
Total	0.4	0.1	0.1	0.2
On beef operations ¹				
Feeder heifers	50.0	9.5	15.8	24.7
Steers	90.6	10.4	25.4	54.8
Total	140.6	19.9	41.2	79.5
On cow calf operations				
Feeder heifers	10.6	4.0	3.2	3.4
Steers	12.5	1.9	2.5	8.1
Total	23.1	5.9	5.7	11.5
On feeder and stocker operations ²				
Feeder heifers	22.4	3.5	7.1	11.8
Steers	31.6	2.0	3.9	25.7
Total	54.0	5.5	11.0	37.5
On feeding operations ³				
Feeder heifers	17.0	2.0	5.5	9.5
Steers	46.5	6.5	19.0	21.0
Total	63.5	8.5	24.5	30.5

1. Excluding small amounts of heifers for slaughter and steers on dairy operations.
2. Farms where cattle are fed on a low energy ration such as hay or pasture.
3. Farms where cattle are fed a high energy ration such as grain as they are fattened for market.

Table 8-8
Feeder cattle by weight category, by farm type at January 1, 2010 — Alberta

	Total	Heavy	Medium	Light
	thousands of head			
On all cattle operations				
Feeder heifers	624.0	346.3	174.7	103.0
Steers	620.0	285.2	186.0	148.8
Total	1,244.0	631.5	360.7	251.8
On dairy operations				
Feeder heifers	1.6	1.3	0.2	0.1
Steers	2.2	0.7	0.5	1.0
Total	3.8	2.0	0.7	1.1
On beef operations ¹				
Feeder heifers	622.4	345.0	174.5	102.9
Steers	617.8	284.5	185.5	147.8
Total	1,240.2	629.5	360.0	250.7
On cow calf operations				
Feeder heifers	33.1	8.5	12.0	12.6
Steers	25.0	8.9	6.2	9.9
Total	58.1	17.4	18.2	22.5
On feeder and stocker operations ²				
Feeder heifers	289.3	171.5	69.5	48.3
Steers	192.8	76.6	54.3	61.9
Total	482.1	248.1	123.8	110.2
On feeding operations ³				
Feeder heifers	300.0	165.0	93.0	42.0
Steers	400.0	199.0	125.0	76.0
Total	700.0	364.0	218.0	118.0

1. Excluding small amounts of heifers for slaughter and steers on dairy operations.

2. Farms where cattle are fed on a low energy ration such as hay or pasture.

3. Farms where cattle are fed a high energy ration such as grain as they are fattened for market.

Table 8-9
Feeder cattle by weight category, by farm type at January 1, 2010 — British Columbia

	Total	Heavy	Medium	Light
	thousands of head			
On all cattle operations				
Feeder heifers	8.0	4.0	1.6	2.4
Steers	16.0	4.8	3.6	7.6
Total	24.0	8.8	5.2	10.0
On dairy operations				
Feeder heifers	0.2	0.2	0.0	0.0
Steers	0.6	0.0	0.1	0.5
Total	0.8	0.2	0.1	0.5
On beef operations ¹				
Feeder heifers	7.8	3.8	1.6	2.4
Steers	15.4	4.8	3.5	7.1
Total	23.2	8.6	5.1	9.5
On cow calf operations				
Feeder heifers	3.6	2.0	0.7	0.9
Steers	7.0	1.4	2.1	3.5
Total	10.6	3.4	2.8	4.4
On feeder and stocker operations ²				
Feeder heifers	2.0	0.6	0.6	0.8
Steers	3.9	0.4	0.9	2.6
Total	5.9	1.0	1.5	3.4
On feeding operations ³				
Feeder heifers	2.2	1.2	0.3	0.7
Steers	4.5	3.0	0.5	1.0
Total	6.7	4.2	0.8	1.7

1. Excluding small amounts of heifers for slaughter and steers on dairy operations.

2. Farms where cattle are fed on a low energy ration such as hay or pasture.

3. Farms where cattle are fed a high energy ration such as grain as they are fattened for market.

Table 8-10
Feeder cattle by weight category, by farm type at January 1, 2010 — West

	Total	Heavy	Medium	Light
	thousands of head			
On all cattle operations				
Feeder heifers	723.0	372.9	200.1	150.0
Steers	783.0	313.4	224.1	245.5
Total	1,506.0	686.3	424.2	395.5
On dairy operations				
Feeder heifers	1.9	1.5	0.2	0.2
Steers	4.0	0.9	0.9	2.2
Total	5.9	2.4	1.1	2.4
On beef operations ¹				
Feeder heifers	721.1	371.4	199.9	149.8
Steers	779.0	312.5	223.2	243.3
Total	1,500.1	683.9	423.1	393.1
On cow calf operations				
Feeder heifers	56.1	17.4	18.1	20.6
Steers	55.1	13.9	13.6	27.6
Total	111.2	31.3	31.7	48.2
On feeder and stocker operations ²				
Feeder heifers	333.8	184.3	80.5	69.0
Steers	243.9	86.1	63.1	94.7
Total	577.7	270.4	143.6	163.7
On feeding operations ³				
Feeder heifers	331.2	169.7	101.3	60.2
Steers	480.0	212.5	146.5	121.0
Total	811.2	382.2	247.8	181.2

1. Excluding small amounts of heifers for slaughter and steers on dairy operations.

2. Farms where cattle are fed on a low energy ration such as hay or pasture.

3. Farms where cattle are fed a high energy ration such as grain as they are fattened for market.

Table 9-1
Prices — Toronto A1 to A2 steers 1,2

	January	February	March	April	May	June	July	August	September	October	November	December	Annual
	dollars per hundred weight												
1980	82.99	82.36	78.83	75.45	76.57	76.08	81.20	84.14	83.88	83.91	83.85	83.42	80.74
1981	82.79	79.36	78.93	78.73	81.34	83.03	83.32	81.69	80.14	78.99	76.43	74.90	80.00
1982	74.12	75.75	77.21	82.07	90.58	90.30	84.34	81.75	79.51	74.55	75.70	74.91	80.54
1983	76.59	78.12	79.19	84.55	83.31	82.59	78.22	76.15	73.91	74.12	76.62	82.25	78.98
1984	85.14	82.74	84.99	86.79	86.63	84.23	86.89	85.87	83.21	82.47	85.90	88.47	85.30
1985	89.04	86.99	86.01	83.24	82.77	81.07	76.31	72.30	73.16	78.89	82.04	86.27	81.63
1986	84.85	82.76	81.09	79.53	79.73	77.92	81.49	83.22	84.08	84.30	88.22	89.45	82.66
1987	85.31	84.38	84.07	87.87	94.98	92.89	89.73	89.48	91.18	88.99	88.57	87.04	88.89
1988	86.84	87.95	89.77	93.54	93.74	90.18	84.18	82.42	83.16	84.16	85.34	85.55	87.35
1989	87.37	89.26	91.37	90.81	91.58	88.09	88.34	87.40	86.27	86.06	88.31	89.92	88.82
1990	88.92	88.42	86.85	87.72	88.88	88.62	88.31	88.36	87.91	88.53	92.65	93.58	88.89
1991	92.23	90.07	89.37	90.71	90.22	88.77	86.03	83.28	79.68	77.18	72.18	74.48	84.56
1992	80.19	83.12	84.82	87.02	88.53	87.32	87.52	86.98	86.79	87.94	91.36	98.25	87.38
1993	98.92	96.98	97.89	99.34	103.48	99.07	95.41	95.83	95.22	90.24	93.08	95.32	97.23
1994	95.70	95.48	96.73	99.19	94.95	91.33	92.07	92.99	87.54	83.45	89.47	90.89	92.58
1995	96.39	96.10	92.56	88.25	85.40	88.34	86.90	85.89	83.66	82.86	83.88	86.85	88.12
1996	82.10	78.64	78.04	75.27	76.62	79.99	83.05	88.23	88.47	87.28	90.42	86.53	82.89
1997	85.42	84.63	87.75	89.35	90.52	88.80	83.00	83.55	80.19	84.00	87.20	85.81	85.85
1998	87.90	87.61	88.96	89.56	91.31	91.29	88.29	87.77	85.81	86.27	86.70	87.67	88.26
1999	89.49	90.96	92.53	93.83	91.78	92.29	89.40	90.38	89.92	91.94	96.91	102.21	92.64
2000	101.66	100.82	104.42	111.04	108.25	104.67	103.38	101.04	98.02	96.83	99.32	104.82	102.86
2001	111.37	114.74	119.56	122.00	119.09	116.34	115.13	108.72	104.33	96.72	100.62	102.23	110.90
2002	106.48	112.93	112.60	106.77	104.42	100.31	98.63	99.32	95.87	95.49	100.29	105.44	103.21
2003	113.45	108.70	103.40	109.27	101.42	80.74	43.34	47.95	67.67	72.95	83.49	84.27	84.72
2004	82.70	74.60	81.46	83.03	81.65	75.15	74.59	69.91	75.77	74.16	73.91	77.04	77.00
2005	88.03	90.96	86.26	86.54	86.66	87.33	92.52	92.19	91.84	91.08	95.34	101.65	90.87
2006	101.73	96.05	93.79	92.52	94.19	95.97	93.86	93.18	92.00	90.36	88.66	87.24	93.30
2007	90.12	95.78	104.35	105.93	107.95	99.22	95.55	89.19	86.81	76.58	73.92	77.88	91.94
2008	78.47	82.56	82.78	84.25	86.65	92.79	95.59	97.56	96.35	91.83	97.99	98.99	90.48
2009	100.19	97.75	99.14	100.38	100.00	94.31	92.87	87.22	82.61	78.14	79.71	80.57	91.07

1. 1976 to 1989, cattle weight 1000 pounds and over; 1990 to 1993, 1051 pounds and over.

2. 1994 onward, cattle weight 1251 pounds and over. Prices in Ontario includes 13 markets and Ontario Public Stockyards.

Source(s): Canfax Research Services, 1996 onward, all slaughter steers.

Table 9-2
Prices — Alberta steers

	January	February	March	April	May	June	July	August	September	October	November	December	Annual
	dollars per hundred weight												
1980	80.00	77.76	74.19	71.12	73.12	71.75	75.71	77.54	78.35	78.82	81.09	82.24	76.81
1981	79.86	74.79	74.23	78.33	79.98	79.22	77.18	75.46	73.40	72.59	70.80	67.99	75.14
1982	65.68	68.34	71.42	78.90	86.98	82.98	78.13	74.89	73.89	71.98	71.92	67.63	73.98
1983	68.26	70.28	73.52	79.65	77.77	75.20	70.87	70.18	69.47	71.92	72.12	74.32	72.69
1984	77.32	77.25	79.70	80.89	78.96	75.83	77.44	75.04	73.88	76.28	79.45	80.65	77.74
1985	81.02	76.98	78.65	78.10	79.01	75.66	69.06	66.91	70.42	76.70	79.82	79.65	75.58
1986	74.51	72.60	73.02	72.24	72.55	70.57	74.89	76.08	79.07	81.26	82.13	79.42	75.60
1987	77.95	78.34	80.62	86.57	89.21	85.32	80.41	84.25	85.84	83.80	83.16	78.88	83.38
1988	78.37	82.17	84.62	86.25	84.53	78.68	76.14	77.05	78.58	82.29	81.04	78.00	80.63
1989	83.54	86.12	87.36	83.45	81.31	77.98	78.59	80.11	79.06	81.92	83.38	83.85	81.54
1990	85.13	86.43	85.66	85.00	82.88	81.80	81.76	82.42	82.55	86.65	88.10	87.02	84.30
1991	86.19	86.08	87.67	87.11	82.14	79.99	77.94	73.79	73.26	73.12	70.16	70.74	78.31
1992	74.53	80.47	82.84	82.66	82.02	79.18	81.03	81.03	81.45	83.96	85.06	89.18	82.22
1993	95.00	96.74	97.53	96.21	94.70	87.98	87.64	91.07	89.85	89.95	91.29	88.96	91.90
1994	91.25	91.01	95.50	93.82	85.95	81.07	83.80	84.73	80.84	81.02	87.83	88.06	86.17
1995	94.53	94.00	89.60	84.29	80.59	81.25	80.00	78.78	77.06	79.24	83.45	81.64	82.91
1996	78.64	75.31	75.94	71.97	72.28	73.60	77.90	83.59	86.61	87.61	86.11	78.16	78.42
1997	79.71	84.12	87.15	86.30	84.69	82.31	83.00	83.55	80.19	84.00	87.20	85.81	84.00
1998	84.69	82.56	83.45	86.74	86.33	83.44	79.81	80.95	78.35	84.06	88.67	86.81	83.56
1999	90.08	88.36	90.85	88.58	88.03	86.37	84.94	87.42	87.26	89.93	95.09	99.11	89.30
2000	94.90	92.46	98.55	100.25	96.59	92.73	89.52	91.71	88.54	91.98	98.99	107.09	95.00
2001	107.66	113.81	118.07	111.75	105.24	99.81	98.41	97.95	94.25	94.82	96.88	99.07	102.82
2002	105.08	107.10	109.62	98.19	94.77	90.73	90.11	92.43	94.57	97.23	101.69	105.05	98.88
2003	114.17	115.13	110.29	108.55	106.31	65.44	37.80	39.02	73.09	79.07	80.45	82.06	84.28
2004	82.36	80.03	85.81	84.25	80.03	71.73	70.64	66.69	78.39	79.12	79.18	85.32	78.40
2005	85.26	88.68	83.19	80.14	79.54	80.42	84.77	85.03	85.19	86.57	91.98	96.42	85.62
2006	95.39	89.32	87.51	85.22	85.03	86.92	85.84	85.23	86.01	85.69	84.97	85.68	86.90
2007	87.60	90.19	97.59	101.87	99.67	88.21	84.39	86.52	84.36	78.55	79.46	84.33	88.56
2008	81.27	83.42	85.29	87.93	90.86	90.18	95.55	96.71	93.42	93.36	95.16	87.69	90.07
2009	86.30	86.53	93.38	98.85	89.85	86.68	84.59	82.58	82.62	80.98	78.76	77.49	85.72

Source(s): Canfax Research Services, 1996 onward, all slaughter steers.

Table 10-1
Cattle and calves: Number by class and calf crop — Canada and United States, January 1¹

	2004	2005	2006	2007	2008	2009	2010	2010 as percentage of 2009
	thousands of head							percent
Cattle and calves	108,958.0	109,943.0	110,997.0	110,728.0	109,930.0	107,701.0	106,716.0	99.1
Cows and heifers that have calved	47,593.3	48,003.0	48,072.3	47,803.9	47,658.2	46,673.0	45,908.0	98.4
Beef cows	37,550.4	37,957.6	37,950.2	37,664.1	37,416.9	36,361.5	35,847.0	98.6
Dairy cows	10,042.9	10,045.4	10,123.1	10,139.8	10,241.3	10,311.5	10,062.0	97.6
All other cattle	61,364.7	61,940.0	62,923.7	62,924.1	62,271.8	61,029.0	60,808.0	99.6
Calf crop ²	42,703.9	42,623.5	42,362.7	42,299.2	41,440.8	40,929.1

1. Figures may not add up to totals because of rounding.

2. January to December calf crop.

Source(s): National Agriculture Statistics Service and Livestock and Animal Products Section, Statistics Canada.

Table 10-2
Cattle and calves: Number by class and calf crop — United States, January 1¹

	2004	2005	2006	2007	2008	2009	2010	2010 as percentage of 2009
	thousands of head							percent
Cattle and calves	94,403.0	95,018.0	96,342.0	96,573.0	96,035.0	94,521.0	93,701.0	99.1
Cows and heifers that have calved	41,519.0	41,678.0	41,806.0	41,789.0	41,692.0	41,045.0	40,456.0	98.6
Beef cows	32,531.0	32,674.0	32,703.0	32,644.0	32,435.0	31,712.0	31,376.0	98.9
Milk cows	8,988.0	9,004.0	9,104.0	9,145.0	9,257.0	9,333.0	9,081.0	97.3
Heifers 500 pounds and over	19,283.0	19,445.0	19,950.0	20,074.0	19,854.0	19,576.0	19,666.0	100.5
For beef cow replacement	5,508.0	5,638.0	5,864.0	5,835.0	5,647.0	5,531.0	5,436.0	98.3
For milk cow replacement	4,018.0	4,117.0	4,298.0	4,325.0	4,415.0	4,410.0	4,516.0	102.4
Other heifers	9,756.0	9,690.0	9,788.0	9,914.0	9,793.0	9,635.0	9,714.0	100.8
Steers 500 pounds and over	16,201.0	16,466.0	16,988.0	17,185.0	17,163.0	16,769.0	16,440.0	98.0
Bulls 500 pounds and over	2,201.0	2,214.0	2,258.0	2,214.0	2,207.0	2,184.0	2,190.0	100.3
Calves under 500 pounds	15,200.0	15,215.0	15,339.0	15,311.0	15,118.0	14,948.0	14,949.0	100.0
Calf crop ²	37,260.0	37,106.0	37,016.0	36,759.0	36,153.0	35,819.0

1. Figures may not add up to totals because of rounding.

2. January to December calf crop.

Source(s): National Agriculture Statistics Service.

Table 10-3
Cattle and calves: Number by class and calf crop — Canada, January 1¹

	2004	2005	2006	2007	2008	2009	2010	2010 as percentage of 2009
	thousands of head							percent
Cattle and calves	14,555.0	14,925.0	14,655.0	14,155.0	13,895.0	13,180.0	13,015.0	98.7
Cows and heifers that have calved	6,074.3	6,325.0	6,266.3	6,014.9	5,966.2	5,628.0	5,452.0	96.9
Beef cows	5,019.4	5,283.6	5,247.2	5,020.1	4,981.9	4,649.5	4,471.0	96.2
Dairy cows	1,054.9	1,041.4	1,019.1	994.8	984.3	978.5	981.0	100.3
Heifers, 1 year and over	2,062.5	2,100.6	2,110.2	2,030.7	2,049.0	1,817.1	1,874.9	103.2
Heifers for beef replacement	687.7	637.8	628.3	587.1	595.0	537.0	516.4	96.2
Heifers for dairy replacement	504.3	517.8	495.1	480.1	471.1	455.6	458.7	100.7
Other heifers	870.5	945.0	986.8	963.5	982.9	824.5	899.8	109.1
Steers, 1 year and over	1,203.3	1,159.5	1,146.8	1,145.2	1,101.6	1,057.6	1,140.7	107.9
Bulls, 1 year and over	269.5	272.6	264.0	244.6	246.8	243.9	230.1	94.3
Calves, under 1 year	4,945.4	5,067.3	4,867.7	4,719.6	4,531.4	4,433.4	4,317.3	97.4
Calf crop ²	5,443.9	5,517.5	5,346.7	5,540.2	5,287.8	5,110.1

1. Figures may not add up to totals because of rounding.

2. January to December calf crop.

3. For current year, January to June calf crop only.

Source(s): Livestock and Animal Products Section, Statistics Canada.

Table 11-1
Supply and disposition of red meat, Canada — Beef

	Beginning stocks	Production	Imports	Total supply	Exports	Ending stocks	Net supply	Available per person			Adjusted for loss ¹
								Retail	Carcass	Boneless	
thousands of tonne							weight per year in kilogram				
1994	23.31	861.86	280.71	1,165.88	216.59	30.09	919.20	23.14	31.70	20.95	13.25
1995	30.09	887.91	252.20	1,170.20	215.48	24.02	930.70	23.19	31.76	21.12	13.36
1996	24.02	976.11	234.82	1,234.95	282.08	21.55	931.32	22.96	31.45	21.04	13.31
1997	21.55	1,047.34	250.06	1,318.95	356.16	22.07	940.72	22.96	31.46	21.04	13.31
1998	22.07	1,140.49	236.72	1,399.28	410.80	25.37	963.10	23.31	31.94	21.37	13.51
1999	25.37	1,222.42	257.99	1,505.78	482.39	32.33	991.06	23.80	32.60	21.81	13.79
2000	32.33	1,222.63	266.46	1,521.42	513.30	25.64	982.47	23.40	32.02	21.42	13.55
2001	25.64	1,221.01	307.81	1,554.45	568.77	31.87	953.82	22.42	30.75	20.57	13.01
2002	31.87	1,259.44	311.32	1,602.63	612.63	31.14	958.85	22.32	30.58	20.46	12.94
2003	31.14	1,162.15	273.83	1,467.12	396.42	45.49	1,025.21	23.65	32.40	21.68	13.71
2004	45.49	1,456.68	112.43	1,614.60	590.02	40.13	984.45	22.50	30.82	20.62	13.04
2005	40.13	1,429.90	126.35	1,596.38	580.49	38.80	977.10	22.12	30.30	20.27	12.82
2006	38.80	1,291.73	147.37	1,477.90	456.86	47.61	973.43	21.81	29.88	19.99	12.64
2007	47.61	1,239.03	202.53	1,489.17	437.81	43.13	1,008.24	22.35	30.62	20.48	12.95
2008	43.13	1,251.11	192.20	1,486.44	477.61	31.60	977.23	21.42	29.34	19.63	12.41

1. Available data adjusted on boneless basis for retail, household, cooking and plate loss.

Table 11-2
Supply and disposition of red meat, Canada — Veal

	Beginning stocks	Production	Imports	Total supply	Exports	Ending stocks	Net supply	Available per person			Adjusted for loss ¹
								Retail	Carcass	Boneless	
thousands of tonne							weight per year in kilogram				
1994	0.65	37.60	5.25	43.50	3.82	1.28	38.40	1.10	1.32	0.91	0.55
1995	1.28	40.30	3.58	45.16	4.11	0.63	40.42	1.14	1.38	0.94	0.57
1996	0.63	40.39	2.52	43.54	4.25	0.68	38.61	1.08	1.30	0.89	0.54
1997	0.68	42.14	3.07	45.89	4.21	0.63	41.05	1.14	1.37	0.94	0.57
1998	0.63	41.43	2.69	44.75	4.48	0.68	39.60	1.09	1.31	0.90	0.54
1999	0.68	41.11	3.16	44.95	5.14	0.59	39.23	1.07	1.29	0.88	0.53
2000	0.59	40.81	3.55	44.95	3.81	0.63	40.51	1.10	1.32	0.90	0.55
2001	0.63	40.60	2.44	43.67	3.89	1.04	38.74	1.04	1.25	0.86	0.52
2002	1.04	38.09	4.17	43.30	2.42	1.37	39.51	1.05	1.26	0.86	0.52
2003	1.37	41.46	2.72	45.55	3.54	3.13	38.88	1.02	1.23	0.84	0.51
2004	3.13	43.46	1.08	47.67	9.04	1.69	36.94	0.96	1.16	0.79	0.48
2005	1.69	40.08	2.41	44.18	8.59	1.71	33.87	0.87	1.05	0.72	0.43
2006	1.71	36.97	4.33	43.02	7.14	1.94	33.93	0.86	1.04	0.71	0.43
2007	1.94	38.53	3.08	43.55	6.26	1.88	35.40	0.89	1.08	0.74	0.45
2008	1.88	36.96	2.54	41.38	5.70	2.76	32.93	0.82	0.99	0.68	0.41

1. Available data adjusted on boneless basis for retail, household, cooking and plate loss.

Table 11-3
Supply and disposition of red meat, Canada — Beef and veal total

	Beginning stocks	Production	Imports	Total supply	Exports	Ending stocks	Net supply	Available per person			Adjusted for loss ¹
								Retail	Carcass	Boneless	
thousands of tonne							weight per year in kilogram				
1994	23.96	899.46	285.96	1,209.38	220.41	31.37	957.60	24.24	33.02	21.86	13.80
1995	31.37	928.21	255.78	1,215.36	219.59	24.65	971.12	24.33	33.14	22.07	13.93
1996	24.65	1,016.50	237.34	1,278.49	286.33	22.23	969.93	24.04	32.76	21.94	13.85
1997	22.23	1,089.48	253.13	1,364.84	360.37	22.70	981.77	24.10	32.83	21.98	13.88
1998	22.70	1,181.92	239.41	1,444.03	415.28	26.05	1,002.70	24.40	33.25	22.27	14.06
1999	26.05	1,263.53	261.14	1,550.73	487.53	32.92	1,030.29	24.87	33.89	22.69	14.33
2000	32.92	1,263.44	270.01	1,566.36	517.11	26.26	1,022.99	24.50	33.34	22.32	14.09
2001	26.26	1,261.61	310.25	1,598.12	572.65	32.91	992.56	23.45	32.00	21.43	13.53
2002	32.91	1,297.53	315.49	1,645.92	615.05	32.51	998.36	23.37	31.84	21.32	13.46
2003	32.51	1,203.61	276.54	1,512.66	399.96	48.62	1,064.08	24.67	33.63	22.52	14.22
2004	48.62	1,500.14	113.51	1,662.27	599.06	41.82	1,021.39	23.46	31.98	21.41	13.52
2005	41.82	1,469.98	128.76	1,640.56	589.08	40.51	1,010.96	22.99	31.35	20.99	13.25
2006	40.51	1,328.70	151.70	1,520.91	464.00	49.55	1,007.36	22.68	30.92	20.70	13.07
2007	49.55	1,277.56	205.61	1,532.72	444.07	45.01	1,043.64	23.25	31.70	21.22	13.40
2008	45.01	1,288.07	194.74	1,527.82	483.31	34.36	1,010.15	22.24	30.32	20.30	12.82

1. Available data adjusted on boneless basis for retail, household, cooking and plate loss.

Table 11-4
Supply and disposition of red meat, Canada — Pork

	Beginning stocks	Production	Imports	Total supply	Exports	Manufacturing	Waste	Ending stocks	Net supply	Available per person			Adjusted for loss ¹
										Retail	Carcass	Boneless	
thousands of tonne									weight per year in kilogram				
1994	10.83	1,229.38	27.25	1,267.46	301.42	28.28	98.35	15.47	823.94	21.59	28.41	20.71	11.75
1995	15.47	1,275.76	27.19	1,318.42	357.04	29.34	102.06	15.20	814.78	21.13	27.81	20.27	11.50
1996	15.20	1,227.76	38.58	1,281.54	372.22	28.24	98.22	13.17	769.69	19.76	25.99	18.95	10.75
1997	13.17	1,256.70	59.63	1,329.50	420.19	28.90	100.54	19.68	760.19	19.32	25.42	18.53	10.51
1998	19.68	1,393.61	63.47	1,476.76	433.79	32.05	111.49	33.93	865.50	21.81	28.70	20.92	11.87
1999	33.93	1,563.87	64.61	1,662.41	553.71	35.97	125.11	32.78	914.84	22.87	30.09	21.94	12.45
2000	32.78	1,639.98	65.65	1,738.41	656.18	37.72	131.20	32.85	880.46	21.81	28.69	20.92	11.87
2001	32.85	1,731.13	89.38	1,853.36	732.57	39.82	138.49	44.82	897.66	22.05	28.94	21.10	11.97
2002	44.82	1,857.18	91.59	1,993.59	876.15	42.72	148.57	54.26	871.89	21.13	27.81	20.27	11.50
2003	54.26	1,880.74	89.63	2,024.63	988.59	43.26	150.46	48.20	794.13	19.08	25.10	18.30	10.38
2004	48.20	1,934.74	100.48	2,083.41	983.43	44.50	154.78	49.72	850.97	20.25	26.64	19.42	11.02
2005	49.72	1,918.46	134.30	2,102.48	1,102.95	44.13	153.48	59.34	742.59	17.50	23.03	16.79	9.52
2006	59.34	1,899.66	141.80	2,100.80	1,093.83	43.69	151.97	48.05	763.25	17.81	23.43	17.08	9.69
2007	48.05	1,898.00	168.48	2,114.53	1,044.64	43.65	151.84	56.46	817.94	18.88	24.84	18.11	10.27
2008	56.46	1,940.98	192.84	2,190.28	1,147.67	44.64	155.28	59.64	783.05	17.87	23.51	17.14	9.72

1. Available data adjusted on boneless basis for retail, household, cooking and plate loss.

**Table 11-5
Supply and disposition of red meat, Canada — Mutton and lamb**

	Beginning stocks	Production	Imports	Total supply	Exports	Ending stocks	Net supply	Available per person			Adjusted for loss ¹
								Retail	Carcass	Boneless	
thousands of tonne							weight per year in kilogram				
1994	1.76	10.49	14.48	26.73	0.10	2.80	23.83	0.73	0.82	0.54	0.32
1995	2.80	10.23	12.97	26.00	0.08	2.17	23.75	0.72	0.81	0.53	0.32
1996	2.17	10.62	11.26	24.05	0.08	1.64	22.33	0.67	0.75	0.50	0.30
1997	1.64	10.18	12.42	24.24	0.23	1.88	22.13	0.66	0.74	0.49	0.29
1998	1.88	10.61	14.15	26.64	0.24	1.39	25.01	0.74	0.83	0.55	0.32
1999	1.39	11.42	15.04	27.84	0.27	1.52	26.06	0.76	0.86	0.56	0.34
2000	1.52	12.54	16.76	30.82	0.29	1.58	28.94	0.84	0.94	0.62	0.37
2001	1.58	14.25	18.14	33.97	0.30	1.58	32.09	0.92	1.03	0.68	0.41
2002	1.58	14.75	17.51	33.84	0.28	1.19	32.38	0.92	1.03	0.68	0.40
2003	1.19	15.76	18.45	35.40	0.09	1.11	34.21	0.96	1.08	0.71	0.42
2004	1.11	17.47	18.45	37.03	0.31	1.40	35.32	0.98	1.11	0.73	0.43
2005	1.40	17.55	19.30	38.24	0.26	1.96	36.02	0.99	1.12	0.73	0.44
2006	1.96	17.04	22.78	41.78	0.23	2.03	39.53	1.08	1.21	0.80	0.46
2007	2.03	16.78	23.88	42.69	0.42	2.17	40.11	1.08	1.22	0.80	0.48
2008	2.17	15.82	22.75	40.74	0.34	1.93	38.47	1.03	1.15	0.76	0.45

1. Available data adjusted on boneless basis for retail, household, cooking and plate loss.

**Table 11-6
Supply and disposition of red meat, Canada — Offal**

	Beginning stocks	Production	Imports	Total supply	Exports	Ending stocks	Net supply	Available per person			Adjusted for loss ¹
								Retail	Carcass	Boneless	
thousands of tonne							weight per year in kilogram				
1994	3.10	84.14	21.62	108.86	60.63	4.30	43.93	1.51	1.51	1.51	0.86
1995	4.30	97.85	17.25	119.40	75.99	3.73	39.68	1.35	1.35	1.35	0.77
1996	3.73	110.06	16.59	130.38	86.16	4.82	39.40	1.33	1.33	1.33	0.75
1997	4.82	116.57	19.59	140.98	101.42	4.72	34.84	1.16	1.16	1.16	0.66
1998	4.72	123.75	21.53	150.00	103.64	5.36	41.01	1.36	1.36	1.36	0.77
1999	5.36	135.83	25.00	166.18	106.23	8.36	51.59	1.70	1.70	1.70	0.96
2000	8.36	147.60	21.76	177.72	138.61	7.15	31.96	1.04	1.04	1.04	0.59
2001	7.15	171.56	30.34	209.05	173.58	8.98	26.50	0.85	0.85	0.85	0.48
2002	8.98	181.47	34.31	224.75	180.88	11.13	32.74	1.04	1.04	1.04	0.59
2003	11.13	164.85	46.18	222.16	167.87	10.33	43.96	1.39	1.39	1.39	0.79
2004	10.33	174.43	35.68	220.44	160.98	11.49	47.98	1.50	1.50	1.50	0.85
2005	11.49	182.39	30.02	223.89	177.26	12.77	33.87	1.05	1.05	1.05	0.60
2006	12.77	167.22	37.07	217.05	170.72	7.46	38.87	1.19	1.19	1.19	0.68
2007	7.46	169.94	33.67	211.07	177.57	9.54	23.96	0.73	0.73	0.73	0.41
2008	9.54	194.14	27.48	231.17	205.02	8.35	17.80	0.53	0.53	0.53	0.30

1. Available data adjusted on boneless basis for retail, household, cooking and plate loss.

Table 11-7
Supply and disposition of red meat, Canada — Total red meat

	Beginning stocks	Production	Imports	Total supply	Exports	Manufacturing	Waste	Ending stocks	Net supply	Available per person			Adjusted for loss ¹
										Retail	Carcass	Boneless	
	thousands of tonne									weight per year in kilogram			
1994	39.65	2,223.47	349.31	2,612.43	582.56	28.28	98.35	53.94	1,849.30	48.07	63.76	44.62	26.73
1995	53.94	2,312.05	313.19	2,679.18	652.70	29.34	102.06	45.75	1,849.33	47.53	63.11	44.21	26.52
1996	45.75	2,364.94	303.77	2,714.46	744.79	28.24	98.22	41.86	1,801.35	45.80	60.82	42.71	25.65
1997	41.86	2,472.93	344.77	2,859.56	882.21	28.90	100.54	48.98	1,798.93	45.24	60.15	42.16	25.34
1998	48.98	2,709.89	338.56	3,097.43	952.95	32.05	111.49	66.73	1,934.22	48.31	64.14	45.10	27.02
1999	66.73	2,974.65	365.80	3,407.16	1,147.74	35.97	125.11	75.58	2,022.78	50.20	66.54	46.89	28.08
2000	75.58	3,063.56	374.18	3,513.32	1,312.19	37.72	131.20	67.85	1,964.34	48.19	64.01	44.90	26.92
2001	67.85	3,178.55	448.11	3,694.50	1,479.11	39.82	138.49	88.29	1,948.81	47.28	62.82	44.06	26.39
2002	88.29	3,350.93	458.90	3,898.11	1,672.36	42.72	148.57	99.09	1,935.37	46.46	61.72	43.31	25.95
2003	99.09	3,264.96	430.81	3,794.86	1,556.51	43.26	150.46	108.26	1,936.39	46.10	61.20	42.92	25.81
2004	108.26	3,626.78	268.12	4,003.15	1,743.78	44.50	154.78	104.43	1,955.66	46.19	61.23	43.06	25.82
2005	104.43	3,588.38	312.38	4,005.17	1,869.55	44.13	153.48	114.58	..	42.53	56.55	39.56	23.81
2006	114.58	3,412.62	353.35	3,880.55	1,728.78	43.69	151.97	107.09	1,849.01	42.75	56.75	39.77	23.90
2007	107.09	3,362.28	431.64	3,901.01	1,666.70	43.65	151.84	113.18	1,925.65	43.93	58.49	40.86	24.56
2008	113.18	3,439.01	437.81	3,990.01	1,836.34	44.64	155.28	104.28	1,849.48	41.67	55.52	38.74	23.29

1. Available data adjusted on boneless basis for retail, household, cooking and plate loss.

Concepts and methods

Livestock statistics

Concepts

Inventory levels of the various types of livestock intended for sale in Canada are measured at specific times throughout the year. Surveyed operations are requested to include all animals located on the farming operation, regardless of ownership. They are also asked to include animals owned but pastured on a community pasture, grazing co-op or public land. Producers are asked to exclude animals owned but kept on a farm, ranch or feedlot operated by someone else. Inventory levels are estimated for cattle, calves, pigs, sheep and lambs. Estimates are also produced for certain categories of animals on the basis of age, sex, weight and/or purpose i.e. breeding or slaughter.

Current information on livestock inventories and related statistics such as supply and disposition enable those active in the agricultural sector to observe and assess changes in the industry, measure performance and keep the agricultural community and general public informed of developments. The primary data users are federal and provincial governments, producer boards, farmers and farm organizations, private business, academic research institutions and students. Livestock data assists governments in formulating agricultural policies and developing programs. Farming organizations use statistics in developing recommendations for producers and governments. Farmers make increasing use of prices, production, and marketing statistics in planning their operations. In addition, these livestock statistics are used in the calculation of farm incomes and in the Canadian System of National Accounts for indicators such as gross domestic product.

Methods

To produce livestock estimates, there are actually 6 different survey occasions. All of the survey occasions collect data primarily using Computer Assisted Telephone Interviews (CATI) although there are special procedures in place for the very large or complex operations.

Two of the occasions are the January Livestock Survey and the July Livestock Survey. These are large-scale general livestock surveys collecting data on cattle, hogs and sheep, referring to inventories at the 1st of the month. The probability samples include about 10,260 operations at January 1, and about 16,260 operations at July 1. These surveys collect data during a three-week period in the western provinces, Ontario and Quebec. Regardless of when operators respond, they are asked to report inventories as of January 1 or July 1. The livestock survey results are released, following processing and analysis, approximately seven weeks after the reference date.

Hog inventories are the focus of two other survey occasions collecting estimates of pig numbers at April 1 and October 1. This survey was initiated in 1998 as estimates from 1978 to 1997 were based solely on analytical tools. For the hog surveys, a sub-sample of the prior livestock survey is used. The probability samples are approximately 2,100 operations and 2,500 operations, respectively, at April 1 and October 1 and, similar to the livestock surveys, these CATI surveys cover the western provinces, Ontario and Quebec. Producers are requested to report their inventories as of the reference date, although the data are collected during a 7-day period near or before that date. The hog survey results are normally released three to four weeks after the reference date.

The June and November Atlantic Surveys are used to produce estimates for that region. These surveys are multi-purpose collecting data, primarily inventories, on livestock including cattle, hogs and sheep in addition to collecting data related to the area, yield and production of the principal field crops. The probability samples are about 1,000 operations in June and 1,100 operations in November. The results are released at the same time as the livestock results. For reference points where surveys do not exist for the Atlantic region, analytical tools are used to produce the estimates.

The total inventories are now distributed to a specific farm type, on the basis of survey results and sector level balance sheets. The two major categories are dairy and beef. The beef sector is then broken down to beef cattle on cow/calf and mixed beef and dairy operations; beef cattle on feeder, stocker/finish operations; and, beef cattle on feeding operations, which include feedlots.

Canadian exports to the United States are obtained from U.S. import custom documents and are officially released by the International Trade Division of Statistics Canada. These data try to register the province of origin of the commodity, but when unknown, will reflect the province of entry into the United States. Information from secondary sources is used by Agriculture Division of Statistics Canada to better estimate the province in which the commodity was raised/grown. Administrative data from the provinces are used to adjust the export numbers by province to better reflect provincial production. Though this methodology will result in different exports by province, the Canadian export totals will equal those released by International Trade Division.

To summarize, the livestock statistics are survey-based estimates. The survey relies on a list frame that is established every five years by the Census of Agriculture and updated to include new entrants, particularly large hog operations. The probability sample surveys are conducted by telephone. The survey results are analysed and corrected before the data are used to analyse the industry and fine-tune the estimates. The survey data are reviewed in a board environment before the commodity analyst works with the data primarily using supply-disposition analysis. The results of the industry analysis are reviewed by the board before being sent to the individual provinces. Once the data are finalised they are released to the public and published. The principal data released include inventories and summarized supply-disposition tables. The data also flow, via farm income estimates, to the Canadian System of National Accounts. In addition the data are used in the calculation of net farm income projections, produced by Agriculture and Agri-Food Canada in co-operation with Statistics Canada and the provinces.